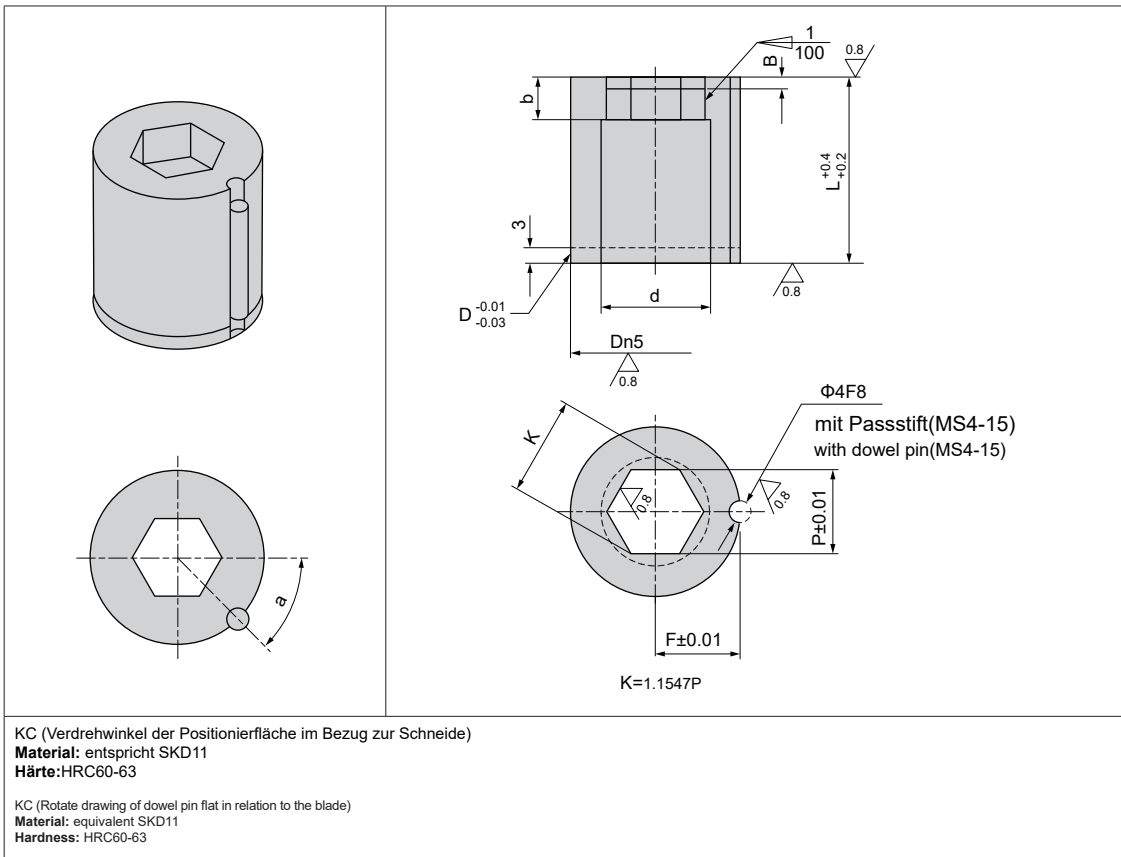



DM-AMBB



Bestell-Nr. Catalog No.		L	Pmax	Pmin	b	B	d	F
Typ Type	Dn5							
DN-AMBB	13	16 20 25 30 35	5.50	2.00	8	2	7	7.5
	16		6.30	2.50			8	8
	20		9.80	3.00			12	10
	25		16.00	4.00			16.6	12.5
	32		20.00	5.00			20.6	16
	38		26.00	6.00			26.6	19
	45		35.00	6.00			36.0	22.5
	50		40.00	7.00			41.0	25
	56		45.00	8.00			46.0	28

Bestellnummer / Order Number

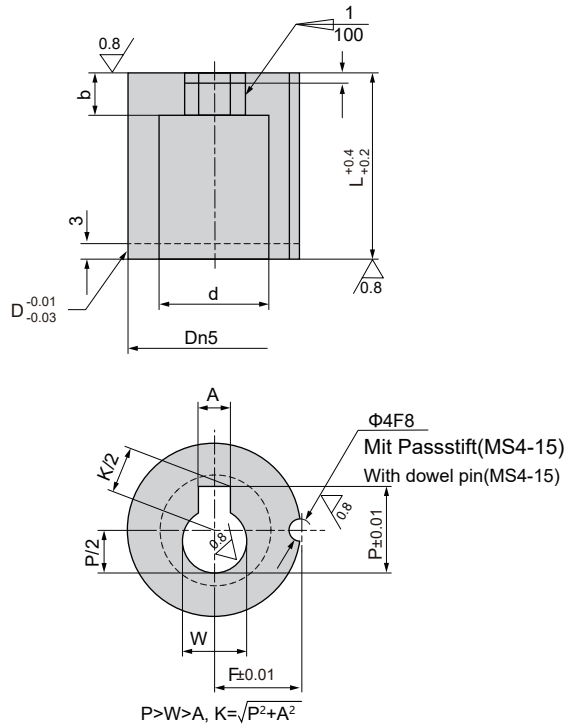
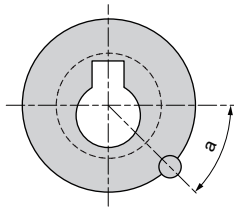
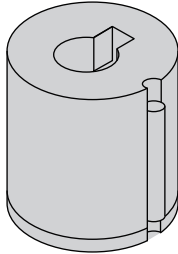
 Bestellnr. / Catalog No. - L - P

DM-AMBB10 - 30 - 12

KC A=45 **DM-AMBB10 - 30 - 12 - KC45**



DM-AMBC



KC (Verdrehwinkel der Positionierfläche im Bezug zur Schneide)
Material: entspricht SKD11
Härte: HRC60-63

KC (Rotate drawing of dowel pin in relation to the blade)
Material: equivalent SKD11
Hardness: HRC60-63

Bestell-Nr. Catalog No.		L	P.Kmax	Pmin	b	B	d	F
Typ Type	Dn5							
DM-AMBC	13	16 20 25 30 35	6.00	2.00	8	2	7	7.5
	16		7.00	2.50			8	8
	20		11.00	3.00			12	10
	25		16.00	4.00			16.6	12.5
	32		20.00	5.00			20.6	16
	38		26.00	6.00			26.6	19
	45		35.00	6.00			36.0	22.5
	50		40.00	7.00			41.0	25
	56		45.00	8.00			46.0	28

Bestellnummer / Order Number

☎ Bestellnr. / Catalog No. - L - P - W - A

DM-AMBC20 - 30 - 12 - 10 - 8

KC A=45 **DM-AMBC20 - 30 - 12 - 10 - 8 - KC45**

