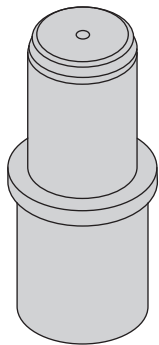
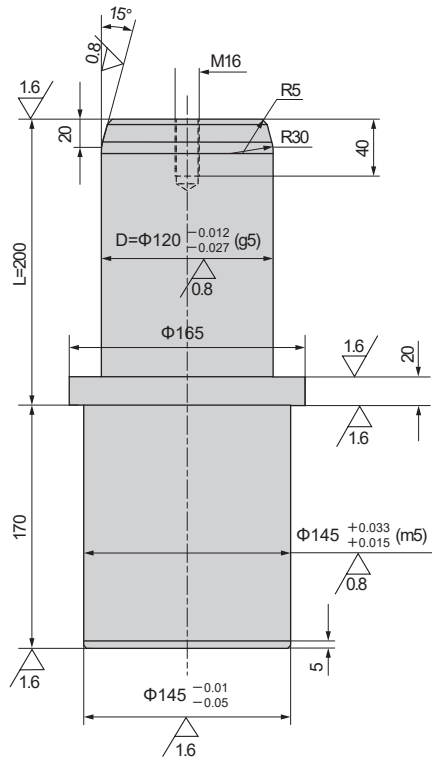
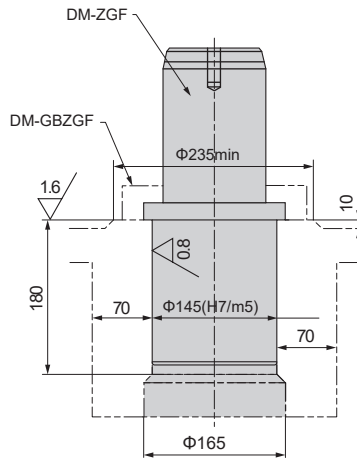




DM-ZGF



Montageanleitung Führungssäule
Guide post installation instruction



Material: C22
Einhärtetiefe 0,8-1,2 mm, HRC58-62

Material: C22
Carburizing and quenching depth 0.8-1.2mm, HRC58-62

Bestellnummer / Order Number



Bestellnr. / Catalog No.

D

L

DM-ZGF

- 120 - 200

