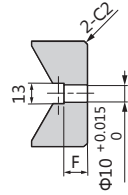
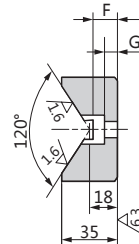
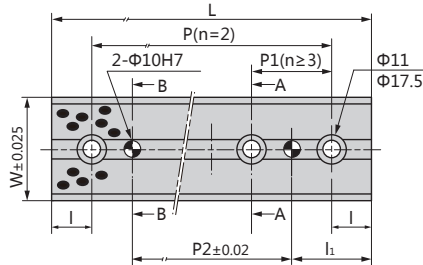
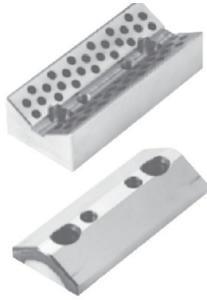


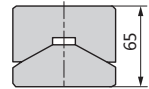
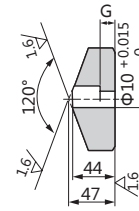
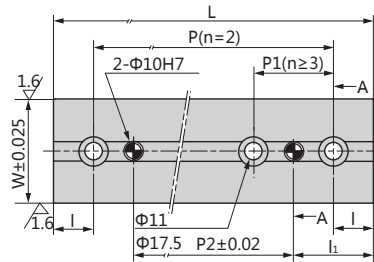


JT35U/JG44V



A-A Schnitt

B-B Schnitt



JT35 & G44V
Höhe 65mm

● Gleitrichtung/feed



Material:
Messing, hochfest + Gr
high strength brass + Gr

Stahl, gehärtet
steel, hardened

Katalog-Nr. / Catalog No.	W	L	I	li	P	P ₁	Bohrungen / Holes n	P ₂	F	G
JT35U65-100	65	100	20	40	60	—	2	20	15	8
150		150	25	50	—	50	3	50		
200		200					4	100		
250		250					5	150		
300		300					6	200		
JG44V65-100	65	100	20	40	60	—	2	20	—	20
150		150	25	50	—	50	3	50		
200		200					4	100		
250		250					5	150		
300		300					6	200		

Bestellnummer / Order Number



Bestellung
Order

Katalog-Nr. / Catalog No.

L

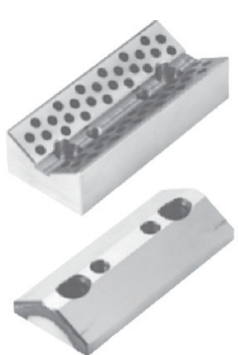
JT35U65

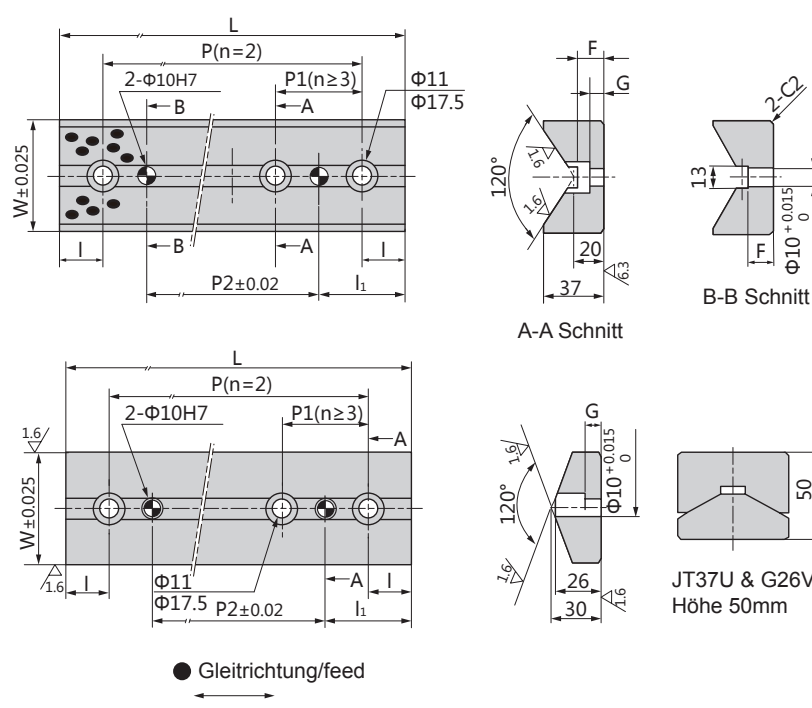
150





JT37U/JG26V





Material:
 Messing, hochfest + Gr
 high strength brass + Gr

Stahl, gehärtet
 steel, hardened

Katalog-Nr. / Catalog No.	W	L	I	I ₁	P	P ₁	Bohrungen / Holes n	P ₂	F	G
JT37U65-100	65	100	20	40	60	—	2	20	20	10
125		125	25	50	75					
150		150			100					
200		200			75	3	100			
250		250	125	150						
300		300	200							
JG26V65-100	65	100	20	40	60	—	2	20	—	10
125		125	25	50	75					
150		150			100					
200		200			75	3	100			
250		250	125	150						
300		300	200							

Bestellnummer / Order Number

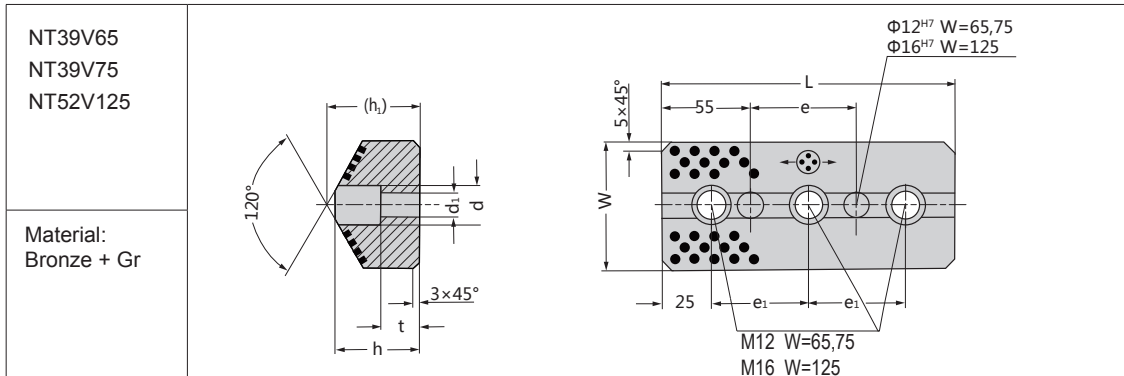
Bestellung / Order:



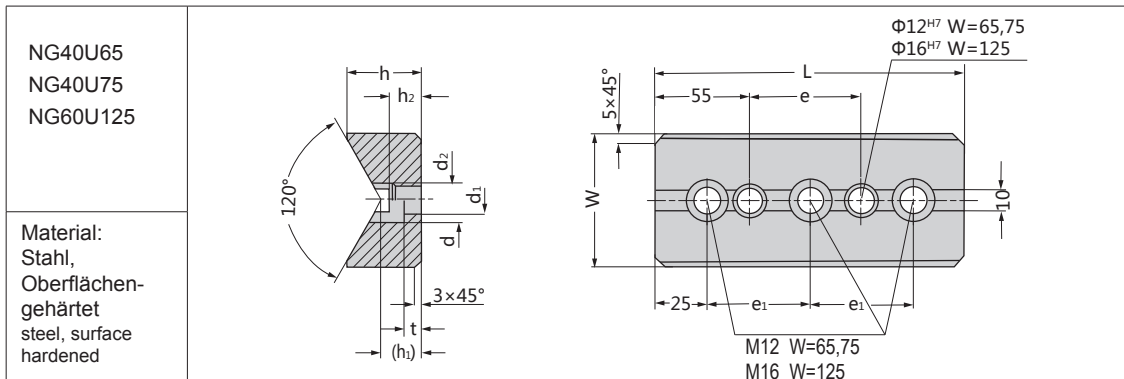


NT--V

NG--U



Katalog-Nr. / Catalog No.	W	M, Ø	h	(h ₁)	l	e	e ₁	d	d ₁	t	Bohrungen / holes
NT39V65-150	65	M12,Ø12	39	(42)	150	50	100	20	13.5	13	2
200					200	100	150				2
250					250	150	100				3
300					300	200	125				3
NT39V75-150	75	M12,Ø12	39	(42)	150	50	100	20	13.5	13	2
200					200	100	150				2
250					250	150	100				3
300					300	200	125				3
NT52V125-150	125	M16,Ø16	52	(57)	150	50	100	26	17.5	15	2
200					200	100	150				2
250					250	150	100				3
300					300	200	125				3



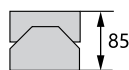
Katalog-Nr. / Catalog No.	W	M, Ø	h	(h ₁)	h ₂	l	e	e ₁	d	d ₁	d ₂	t	Bohrungen / holes
NG40U65-150	65	M12,Ø12	40	(23)	21	150	50	100	20	13.5	14	10	2
200						200	100	150					2
250						250	150	100					3
300						300	200	125					3
NG40U75-150	75	M12,Ø12	40	(23)	21	150	50	100	20	13.5	14	10	2
200						200	100	150					2
250						250	150	100					3
300						300	200	125					3
NG60U125-150	125	M16,Ø16	60	(28)	27	150	50	100	26	17.5	18	15	2
200						200	100	150					2
250						250	150	100					3
300						300	200	125					3

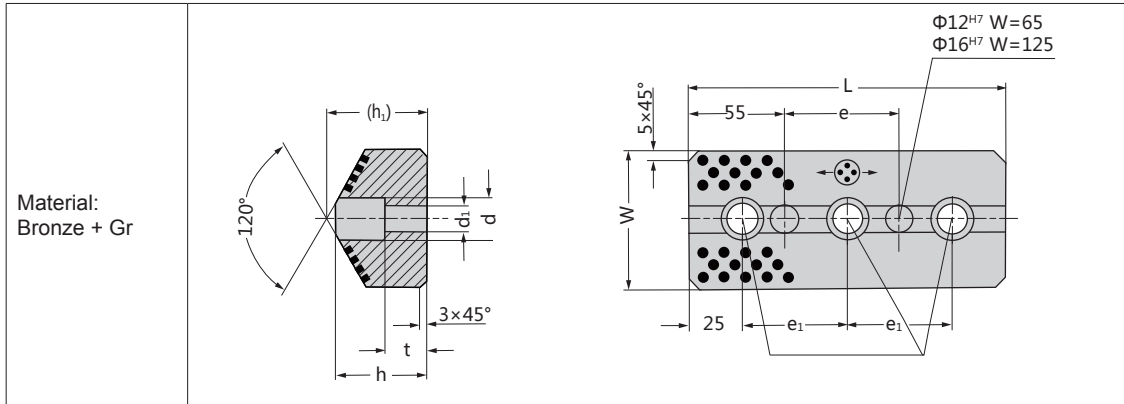
Bestellnummer / Order Number

Bestellung / Order

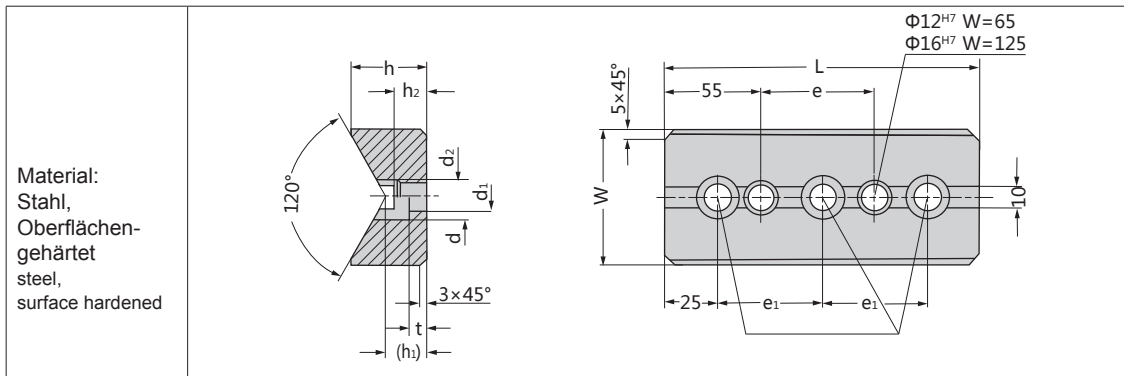
Katalog-Nr. / Catalog No. - l

NG40U65 - 150



FT44V65
FT47V125


Katalog-Nr. / Catalog No.	W	M,Ø	h	(h ₁)	L	e	e ₁	d	d ₁	t	Bohrungen / holes
FT44V65 - 150	65	M12,Ø12	44	(47)	150	45	100	20	13.5	20	2
200					200	95	150				2
250					250	145	100				3
300					300	195	125				3
FT47V125-150	125	M16,Ø16	47	(52)	150	45	100	26	17.5	15	2
200					200	95	150				2
250					250	145	100				3
300					300	195	125				3

FG35U65
FG60U125


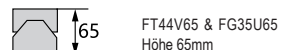
Katalog-Nr. / Catalog No.	W	M,Ø	h	(h ₁)	h ₂	L	e	e ₁	d	d ₁	d ₂	t	Bohrungen / Holes
FG35U65 - 150	65	M12,Ø12	35	(18)	17	150	45	100	20	13.5	14	8	2
200						200	95	150					2
250						250	145	100					3
300						300	195	125					3
FG60U125-150	125	M16,Ø16	60	(33)	32	150	45	100	26	17.5	18	15	2
200						200	95	150					2
250						250	145	100					3
300						300	195	125					3

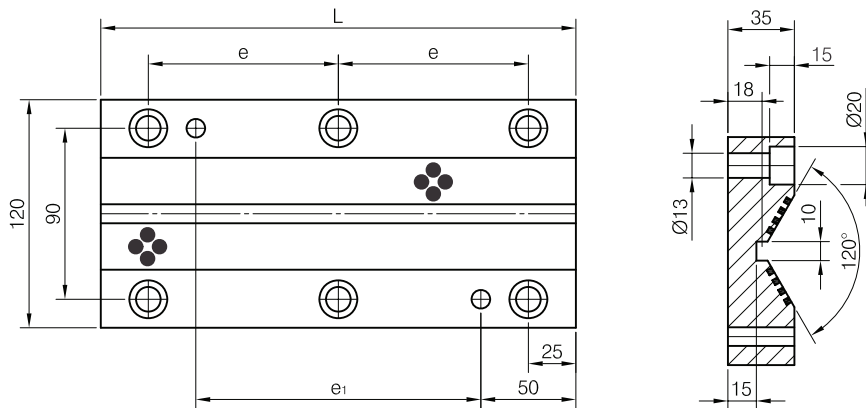
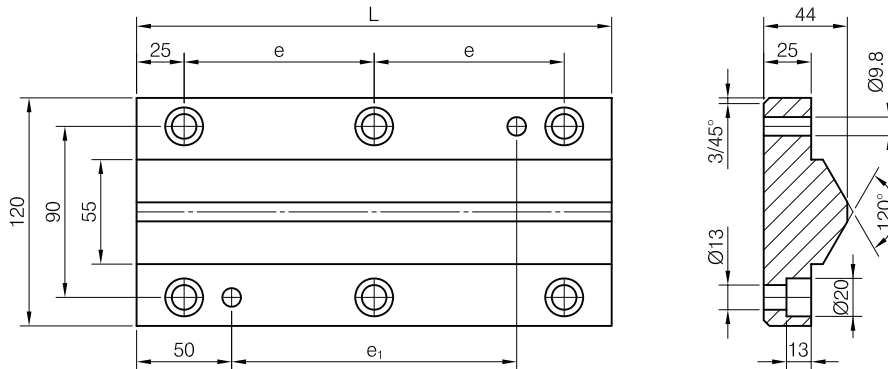
Bestellnummer / Order Number

Bestellung
Order

Katalog-Nr. / Catalog No. - L

FG35U65 - 150



4-XXXX-300
Form A

Form B

Material

 Bronze mit Festschmierstoff (Prismenführung)
 Stahl, Oberflächengehärtet (Prismengleitstück)

Material

 Bronze with solid lubricant (Female U)
 Steel, surface hardened (Male V)

e	e ₁	L	Form	
50	50	150	A	B
75	100	200		
100	150	250		
125	200	300		

Bestellnummer / Order Number

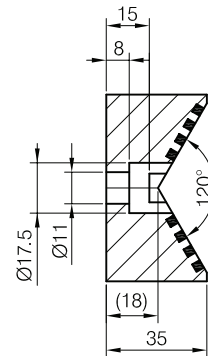
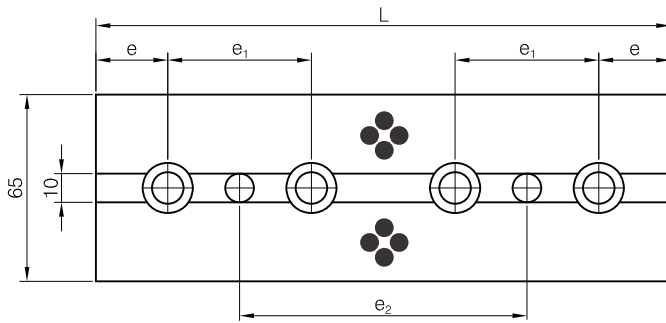
 Bestellung Order	Katalog-Nr. / Catalog No.	L	Form	Typ
	4	200	A	300



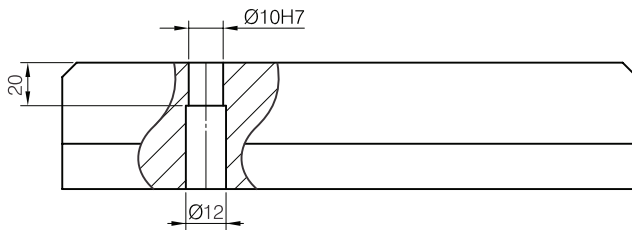
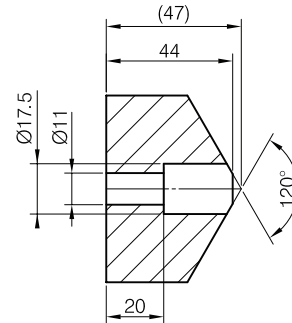
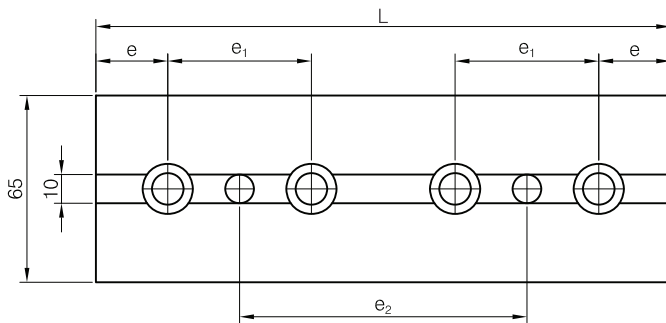


4-XXXX-301

Form A



Form B



Material
 Bronze mit Festschmierstoff (Prismenführung)
 Stahl, Oberflächengehärtet (Prismengleitstück)

Material
 Bronze with solid lubricant (Female U)
 Steel, surface hardened (Male V)

e	e ₁	e ₂	L	Form	
20	60	20	100	A	B
25	50	50	150		
		100	200		
		150	250		
		200	300		

Bestellnummer / Order Number



Bestellung
Order

Katalog-Nr. / Catalog No.

L

Form

Typ

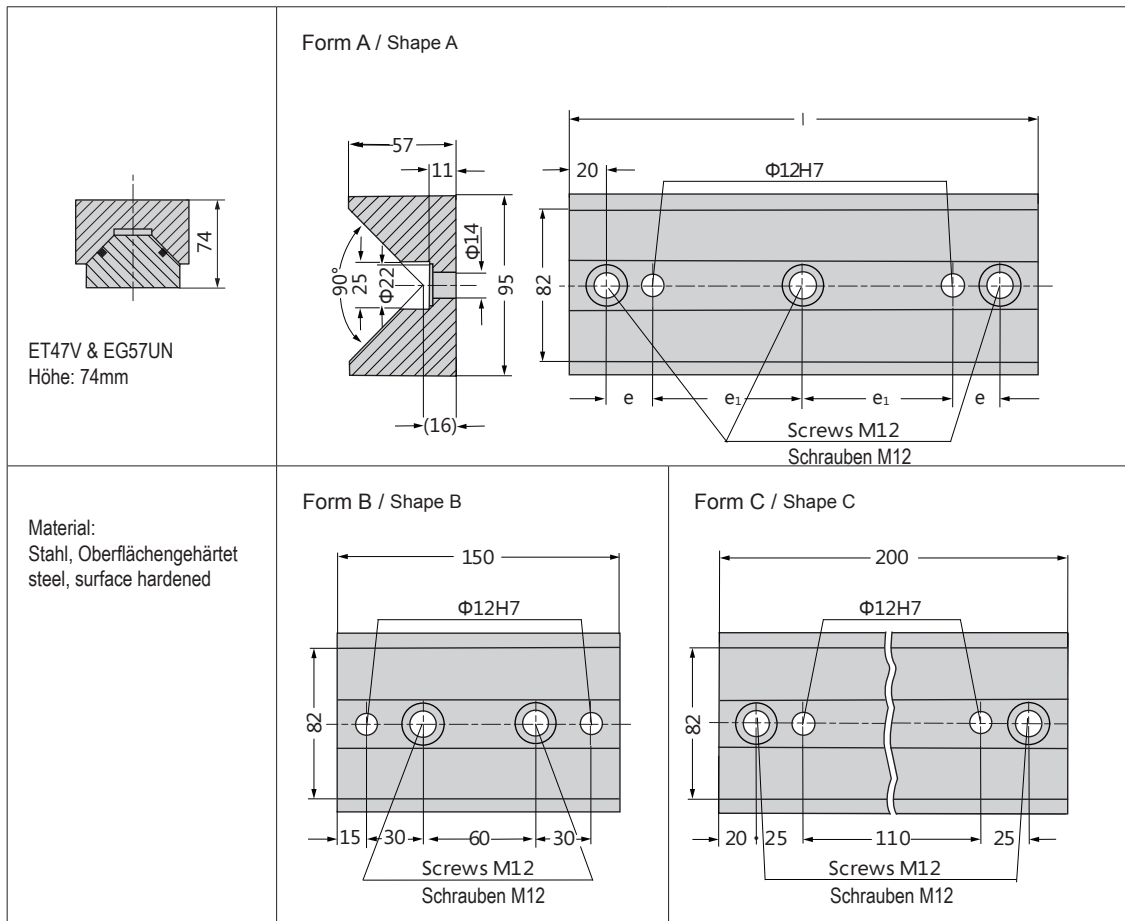
4

200

A

301



EG57UN


Katalog-Nr. / Catalog No.	Form / Shape	l	e	e ₁	Bohrungen / holes
EG57UN95-150	B	150	30	—	2
200	C	200	25	—	2
250	A	250	25	80	3
300	A	300	30	100	3

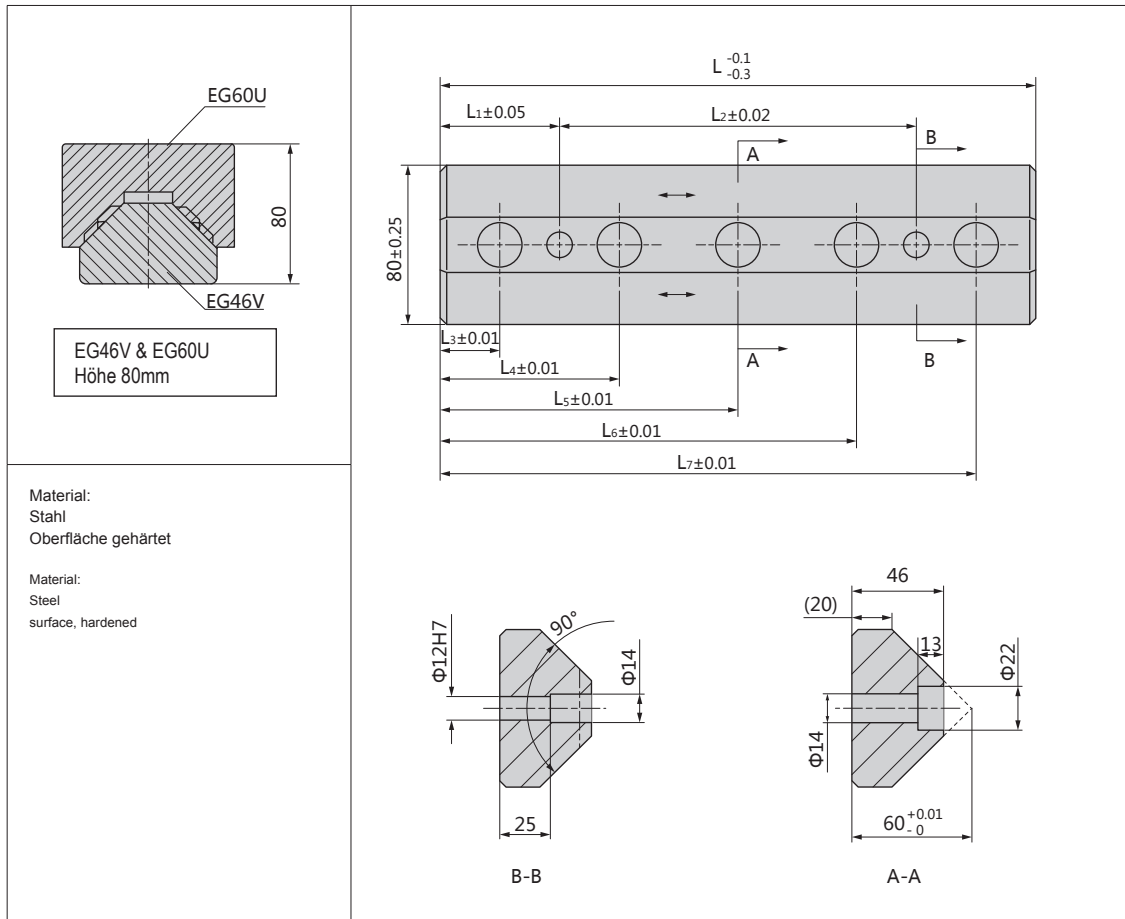
Bestellnummer / Order Number

Bestellung / Order

Katalog-Nr. / Catalog No. - l

EG57UN95 - 200



EG46V


Katalog-Nr. / Catalog No.	L	L ₁	L ₂	L ₃	L ₄	L ₅	L ₆	L ₇
EG46V80-150	150	15	120	/	45	/	105	/
EG46V80-200	200	55	90	25	/	100	/	175
EG46V80-250	250	60	130	30	90	/	160	220
EG46V80-300	300	60	180	30	90	150	210	270

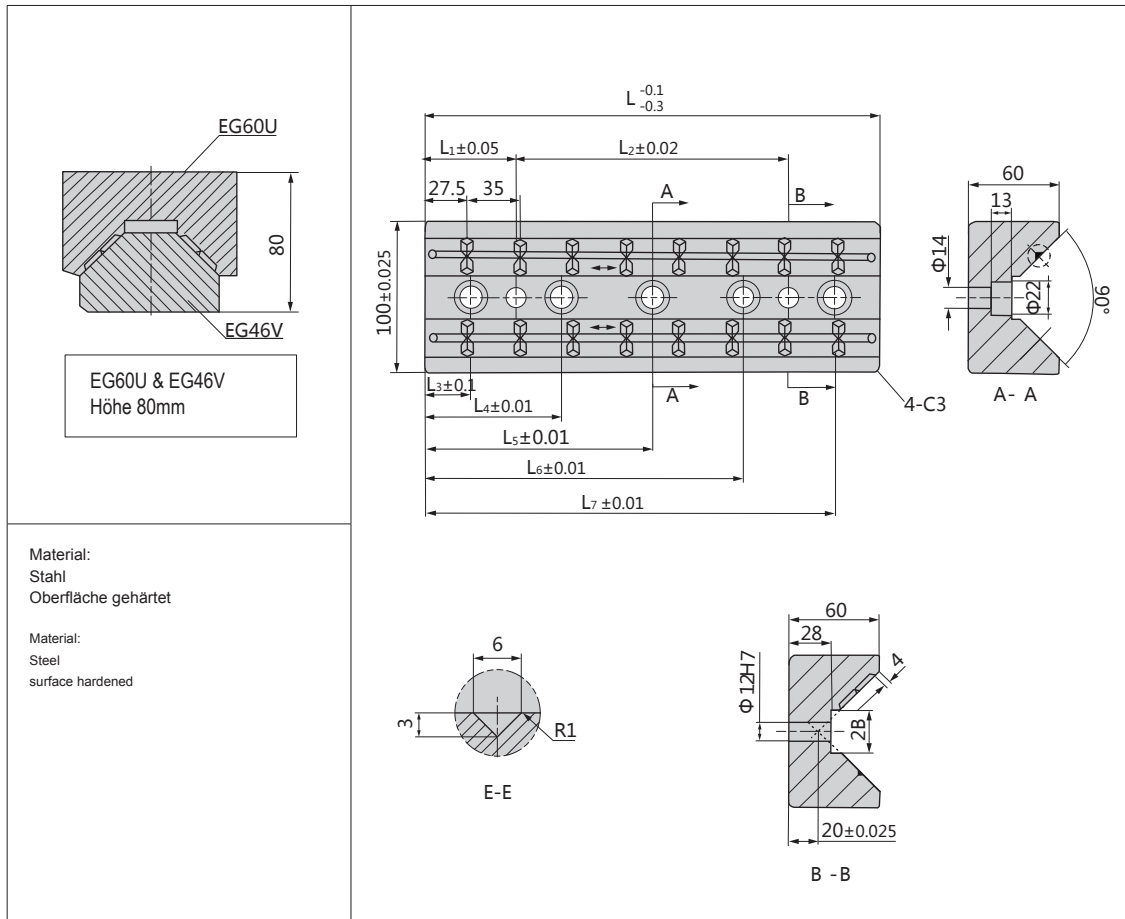
Bestellnummer / Order Number

Bestellung / Order

Katalog-Nr. / Catalog No. - L

EG46UN95 - 200



EG60U


Katalog-Nr. / Catalog No.	L	L ₁	L ₂	L ₃	L ₄	L ₅	L ₆	L ₇
EG60U100-150	150	15	120	/	45	/	105	/
EG60U100-200	200	55	90	25	/	100	/	175
EG60U100-250	250	60	130	30	90	/	160	220
EG60U100-300	300	60	180	30	90	150	210	270

Bestellnummer / Order Number

Bestellung / Order

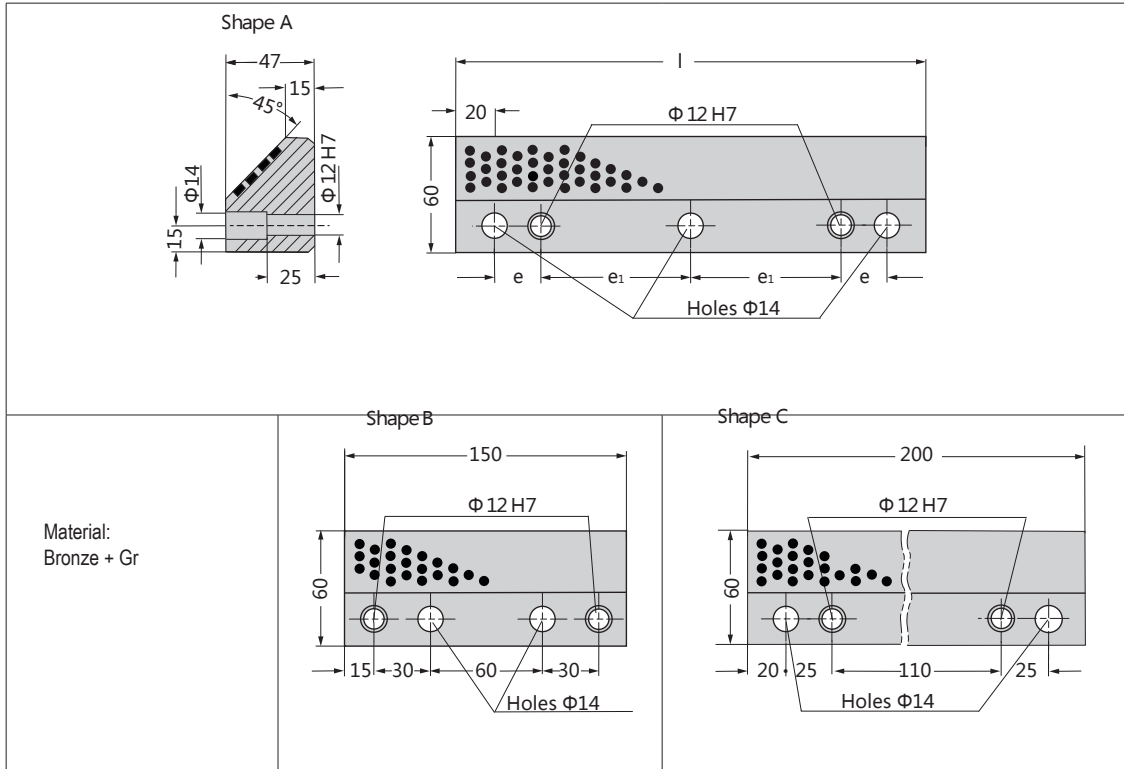
Katalog-Nr. / Catalog No. - L

EG60U100 - 200



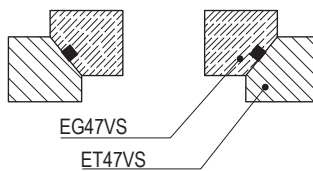


ET47VS

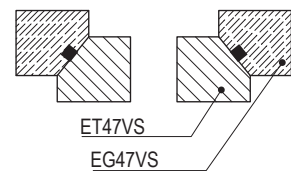


Katalog-Nr. / Catalog No.	Form / Shape	l	e	e ₁	Bohrungen / holes
ET47VS60-150	B	150	30	—	2
200	C	200	25	—	2
250	A	250	25	80	3
300	A	300	30	100	3

Beispiel 1
Exemple 1



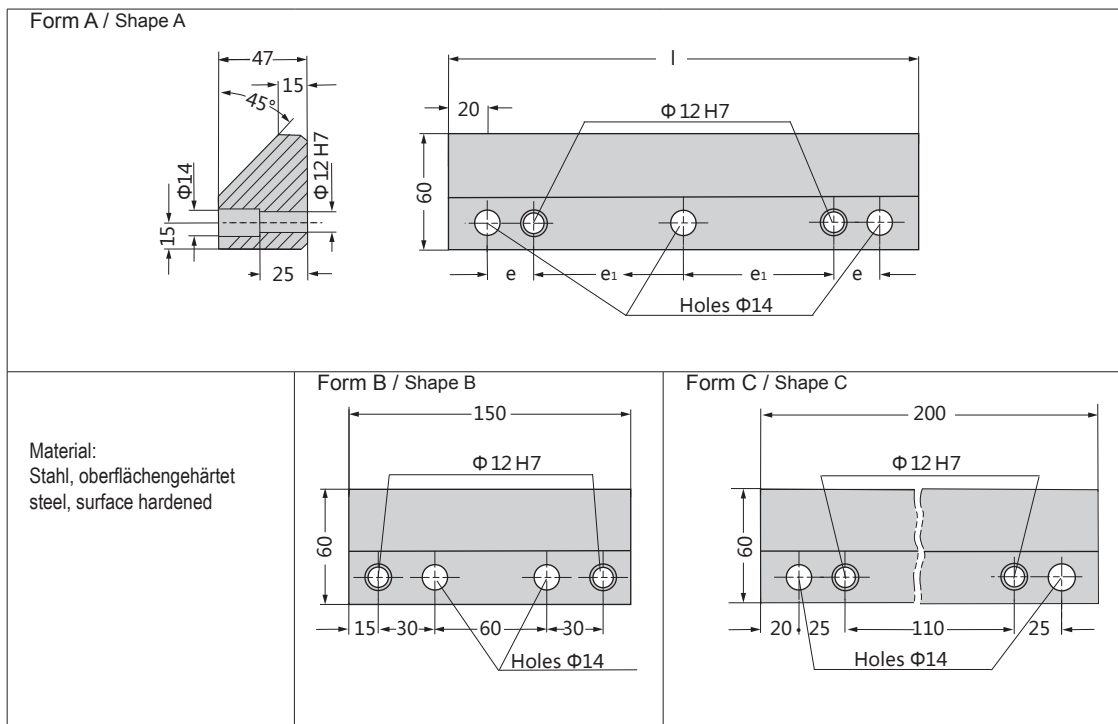
Beispiel 2
Exemple 2



Bestellnummer / Order Number

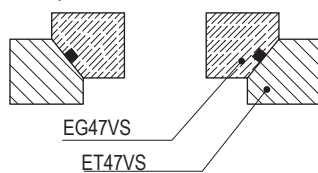
Bestellung / Order:



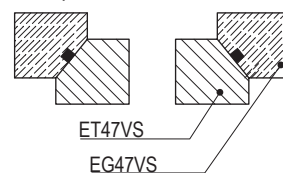
EG47VS


Katalog-Nr. / Catalog No.	Form / Shape	l	e	e ₁	Bohrungen / holes
EG47VS60-150	B	150	30	—	2
200	C	200	25	—	2
250	A	250	25	80	3
300	A	300	30	100	3

Exemple 1



Exemple 2


Bestellnummer / Order Number

 Bestellung
Order

Katalog-Nr. / Catalog No.

- l

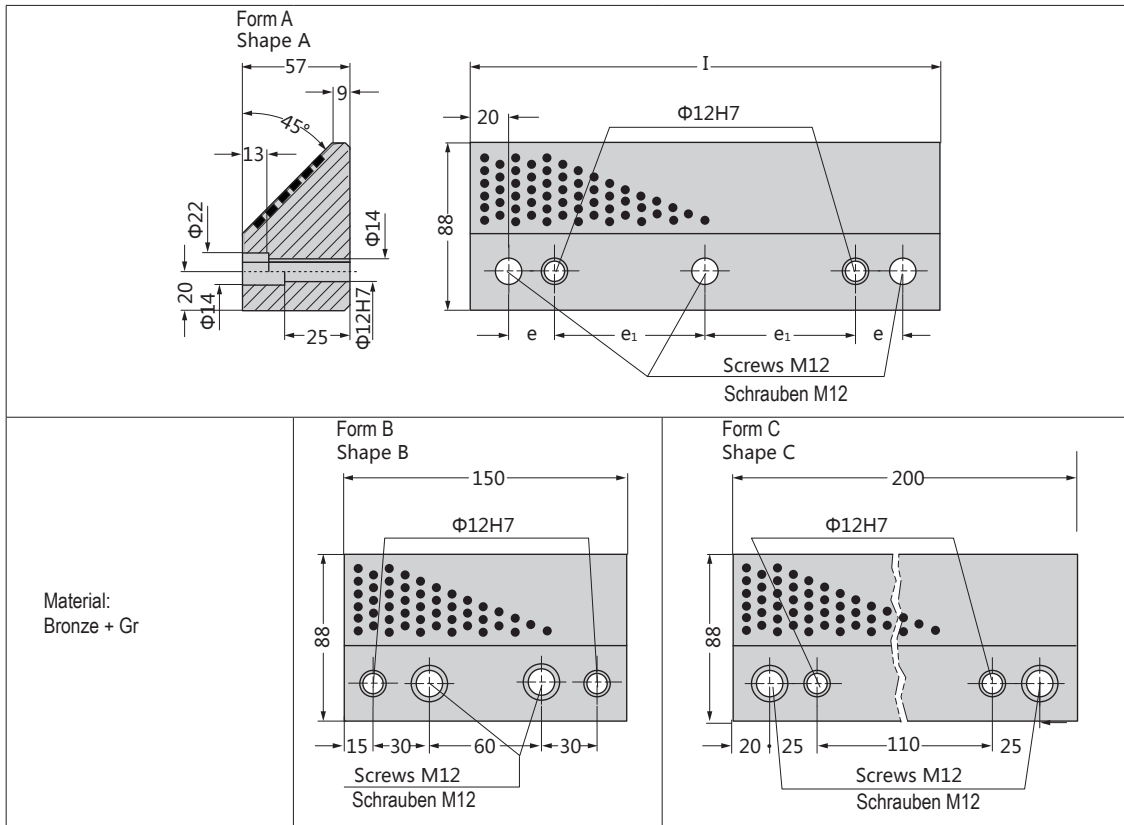
EG47VS60

- 200



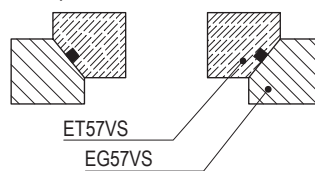


ET57VS

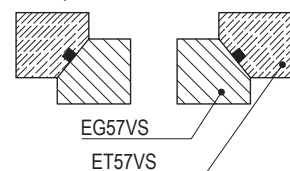


Katalog-Nr. / Catalog No.	Form / Shape	l	e	e ₁	Bohrungen / holes
ET57VS88 -150	B	150	30	—	2
200	C	200	25	—	2
250	A	250	25	80	3
300	A	300	30	100	3

Beispiel 1
Exemple 1



Beispiel 2
Exemple 2



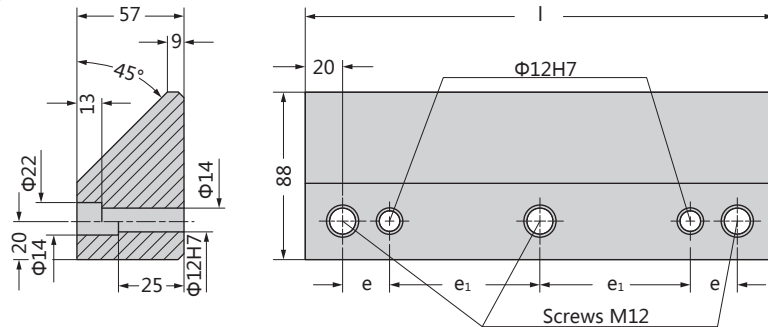
Bestellnummer / Order Number

Bestellung / Order

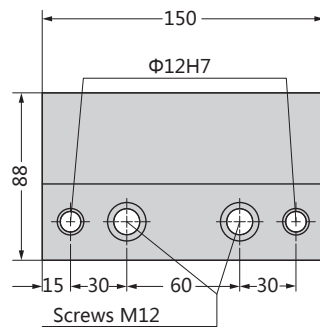
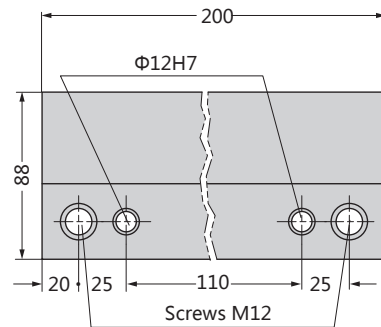
Katalog-Nr. / Catalog No. - l

ET57VS88 - 200

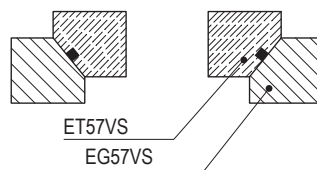
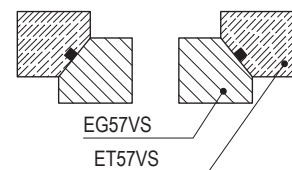


EG57VS
Form A / Shape A

Material:

 Stahl, Oberflächegehärtet
 Steel, surface hardened

Form B / Shape B

Form C / Shape C


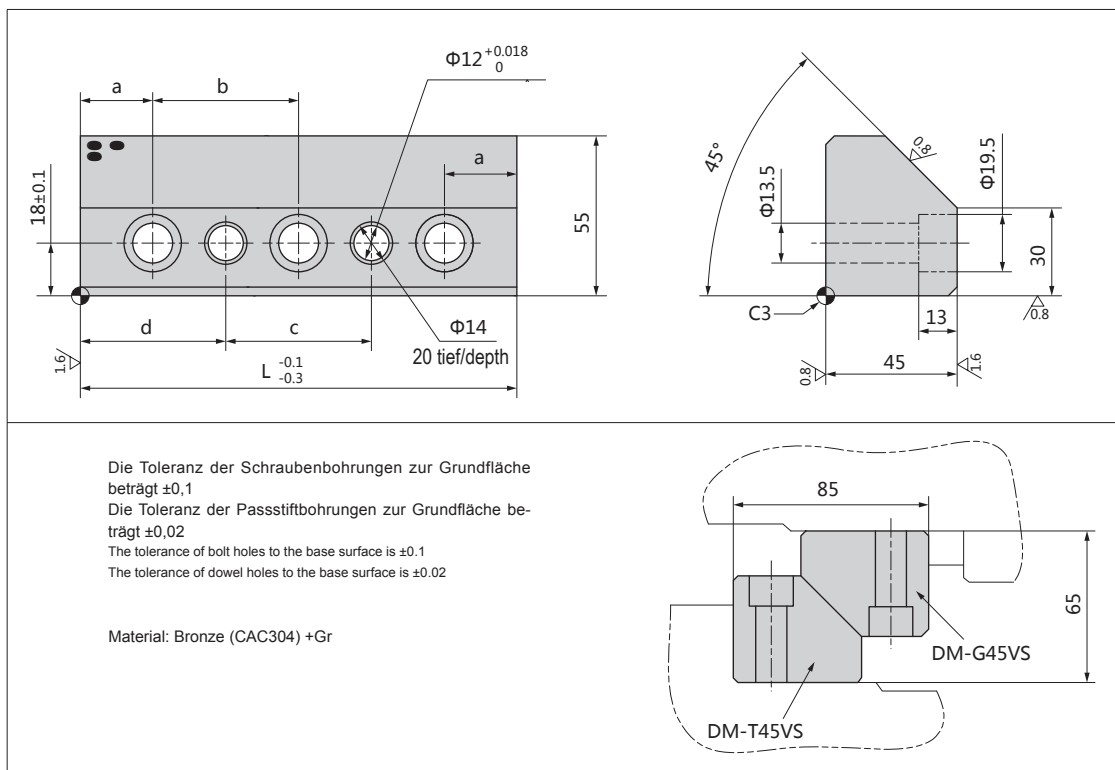
Katalog-Nr. / Catalog No.	Form / Shape	l	e	e ₁	Anzahl Schraubenbohrungen / Number of screw holes
EG57VS88-150	B	150	30	—	2
200	C	200	25	—	2
250	A	250	25	80	3
300	A	300	30	100	3

Beispiel 1
Exemple 1

Beispiel 2
Exemple 2

Bestellnummer / Order Number

 Bestellung
 Order

Katalog-Nr. / Catalog No. - l

EG57VS88
- 200


DM-T45VS


Katalog-Nr. / Catalog No.	L	a	b	c	d	Bohrungen holes
DM-T45VS55	100	20	60	20	40	2
	125	25	75	25	50	2
	150	25	50	50	50	3
	200	25	50	100	50	4
	250	25	50	150	50	5
	300	25	50	200	50	6

Bestellnummer / Order Number

Bestellung / Order: -
DM-T45VS55 - 100





DM-G45VS

Technical drawing of the DM-G45VS component. The top view shows a rectangular plate with length L, width 55, and a hole diameter of $\Phi 14$ with a depth of 20. The side view shows a profile with a 45-degree chamfer, a diameter of $\Phi 13.5$, and a chamfered diameter of $\Phi 19.5$. Surface finish requirements are specified as $\sqrt{1.6}$ and $\sqrt{0.8}$. A note indicates: "Oberfläche HF-abgeschreckt = HRC50 oder höher. The surface high frequency quenching, HRC50 or more".

Die Toleranz der Schraubenbohrungen zur Grundfläche beträgt $\pm 0,1$
Die Toleranz der Passtiftbohrungen zur Grundfläche beträgt $\pm 0,02$

The tolerance of bolt holes to the base surface is ± 0.1
The tolerance of dowel holes to the base surface is ± 0.02

Material: S45C

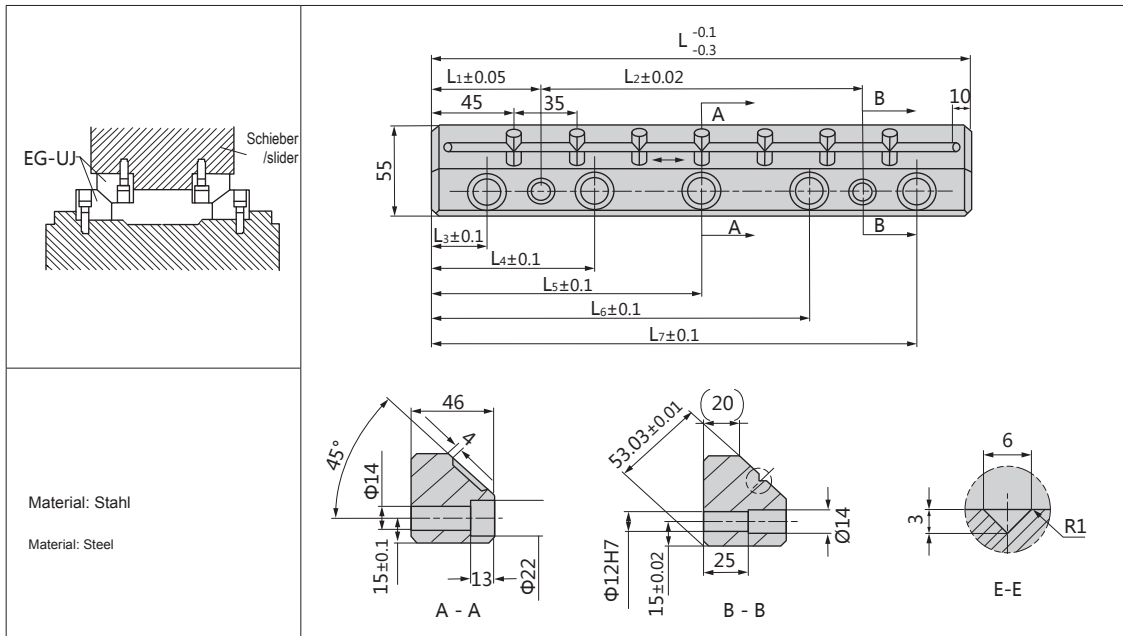
Assembly diagram showing the DM-G45VS component (shaded) and the DM-T45VS component (dashed outline). The DM-G45VS has a length of 85 and a height of 65.

Katalog-Nr. / Catalog No.	L	a	b	c	d	Bohrungen Holes
DM-G45VS55	100	20	60	20	40	2
	125	25	75	25	50	2
	150	25	50	50	50	3
	200	25	50	100	50	4
	250	25	50	150	50	5
	300	25	50	200	50	6

Bestellnummer / Order Number

Bestellung / Order: -



EG46UJ


Katalog-Nr. / Catalog No.	L	L ₁	L ₂	L ₃	L ₄	L ₅	L ₆	L ₇
EG46UJ55-150	150	15	120	/	45	/	105	/
EG46UJ55-200	200	55	90	25	/	100	/	175
EG46UJ55-250	250	60	130	30	90	/	160	220
EG46UJ55-300	300	60	180	30	90	150	210	270

Bestellnummer / Order Number

Bestellung / Order: -
DM-G45VS55 - 100

