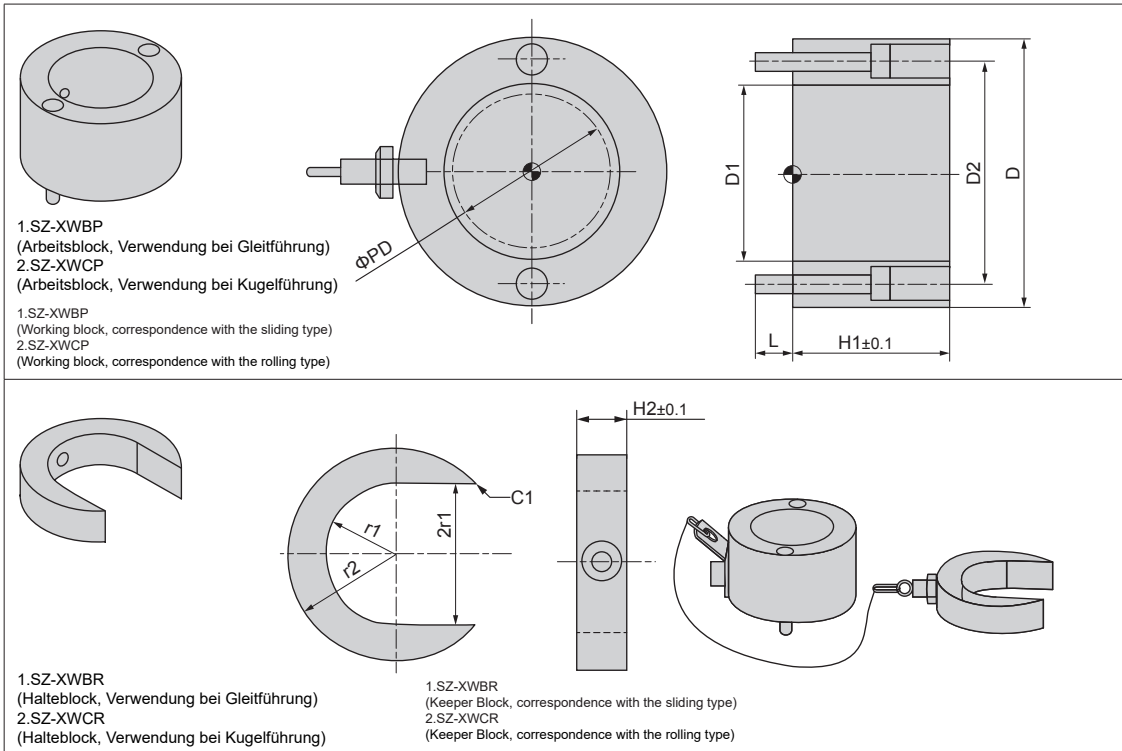


SZ-XWB(P/R)

SZ-XWC(P/R)



| PD | D | ① D1 | ② D1 | ③ r1 | ④ r1 | D2 | r2 | Bolzen Bolt | L |
|----|-----|---------|---------|---------|---------|-----|----|----------------|----|
| 25 | 46 | 29 | 31.5 | 14.5 | 15.75 | 37 | 23 | M4XP0.7 | 10 |
| 32 | 56 | 37 | 41 | 18.5 | 20.5 | 45 | 28 | M4XP0.7 | |
| 38 | 72 | 43 | 49 | 21.5 | 24.5 | 60 | 36 | M5XP0.8 | |
| 50 | 86 | 56 | 62 | 28 | 31 | 72 | 43 | M6XP1.0 | |
| 60 | 112 | 66 | 76 | 33 | 38 | 92 | 56 | M8XP1.25 | 12 |
| 80 | 140 | 88 | 100 | 44 | 50 | 116 | 70 | M8XP1.25 | |

Material: SS400
Befestigung: 2 Schrauben
Material: SS400
Attachment: 2 bolts

SZ-XWB(SZ-XWBP+SZ-XWBR)
SZ-XWC(SZ-XWCP+SZ-XWCR)

| Bestell-Nr. Catalog No. | H1 Abmessung in 5 mm Schritten Dimensions span 5mm | Farbe Color |
|----------------------------|---|--------------------------------------|
| ① SZ-XWBP | 25 | R(Rot/ Red) Y(Gelb/ Yellow) |
| | 32 | |
| ② SZ-XWCP | 38 | |
| | 50 | |
| 60 | | |
| 80 | | |

| Bestell-Nr. Catalog No. | H2 Abmessung in 5 mm Schritten Dimensions span 5mm | Farbe Color |
|----------------------------|--|--------------------------------------|
| ③ SZ-XWBR | 25 | R(Rot/ Red) Y(Gelb/ Yellow) |
| | 32 | |
| ④ SZ-XWCR | 38 | |
| | 50 | |
| 60 | | |
| 80 | | |

| Bestell-Nr. Catalog No. | H1 Abmessung in 5 mm Schritten Dimensions span 5mm | Farbe Color | H2 Abmessung in 5 mm Schritten Dimensions span 5mm | Farbe Color |
|----------------------------|--|--------------------------------------|--|----------------------------------|
| SZ-XWB SZ-XWC | 25 | R(Rot/ Red) Y(Gelb/ Yellow) | 10-20 | R(Rot/Red) Y(Gelb/ Yellow) |
| | 32 | | 25-40 | |
| | 38 | | 10-20 | |
| | 50 | | 25-50 | |
| | 60 | | 10-20 | |
| | 80 | | 25-50 | |

Der Arbeits- und der Halteblock sind mit einer Kette verbunden

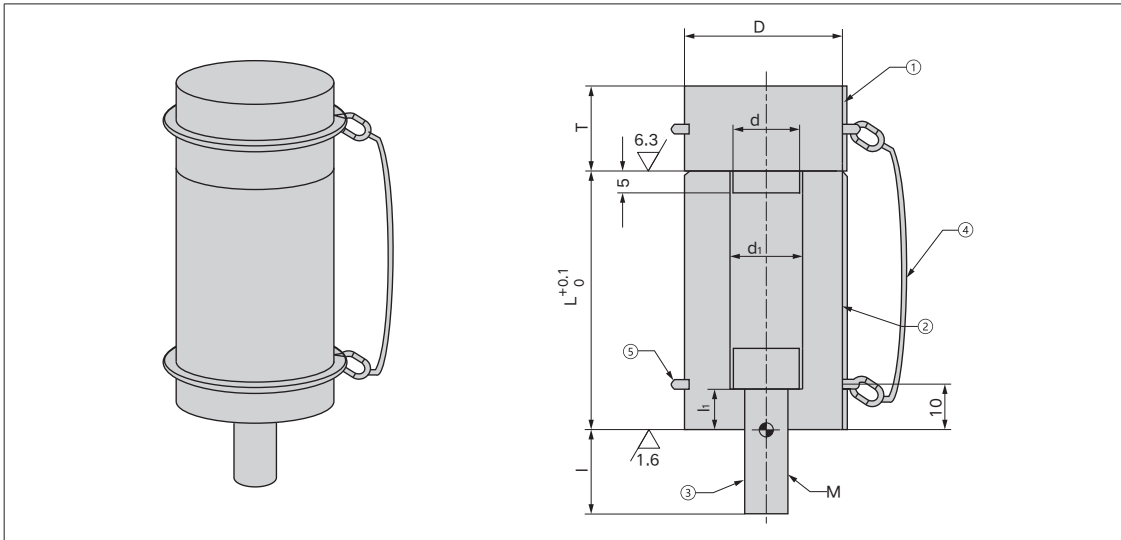
Working block and kepping block is connected with a chain

Bestellnummer / Order Number

| | | | | | |
|--------------------------|-----|-------|----|-------|---|
| Bestellnr. / Catalog No. | 1,2 | 3,4 | | | |
| Type PD | H1 | Color | H2 | Color | S |
| SZ-XWB38 | 40 | R | 40 | R | |
| SZ-XWBP32 | - | - | 35 | R | |
| SZ-XWBR50 | 35 | R | - | - | |
| SZ-XWB38 | 40 | R | 40 | R | S |



SZ-XWD(R/P)



| Bestell-Nr. Catalog No. | Bauteile Component parts | | | | |
|----------------------------|-----------------------------|---|---|---|---|
| | ① | ② | ③ | ④ | ⑤ |
| SZ-XWD | ○ | ○ | ○ | ○ | ○ |
| SZ-XWDR | | ○ | ○ | | |
| SZ-XWDP | ○ | | | ○ | ○ |

| Bestell-Nr. Catalog No. | ② | | |
|----------------------------|----|---|---|
| Type | D | Maß in 0,1 mm Schritten 0.1 mm Dimensions span | Farbe Color |
| SZ-XWD ①② ③④ ⑤ | 25 | 22.0-170.0 | R(Rot/Red) Y(Gelb/Yellow) N(Normal) |
| | 38 | 25.0-200.0 | |
| | 50 | | |
| | 60 | | |
| SZ-XWDR ②③ | 25 | 22.0-170.0 | R(Rot/Red) Y(Gelb/Yellow) N(Normal) |
| | 38 | 25.0-200.0 | |
| | 50 | | |
| | 60 | | |

Bauteile:
 1 Distanzblock SS400
 2 Distanzblock SS400
 3 Schraube (Festigkeitsklasse 12.9 JIS B 0205 2)
 4 Kette
 5 C-Ring 2 JIS B 2804

Component parts:
 1 Limit block SS400
 2 Safety pad SS400
 3 Bolt (Strength classification 12.9 JIS B 0205 2)
 4 Chain
 5 C-type ring 2 JIS B 2804

| ① | |
|--|---|
| Maß in 5 mm Schritten 5mm Dimensions span | Farbe Color |
| 10-50 | R(Rot/Red) Y(Gelb/ Yellow) N(Normal) |
| 10-50 | |
| 55-100 | |
| 10-50 | |
| 55-100 | |

| Catalog No. | | ① | |
|--------------------|----|---|---|
| Type | D | TMaß in 5 mm Schritten 5mm Dimensions span | Farbe Color |
| SZ-XWDP ①④ ⑤ | 25 | 10-50 | R(Rot/Red) Y(Gelb/ Yellow) N(Normal) |
| | 38 | | |
| | 50 | 10-50 | |
| | | 55-100 | |
| | 60 | 10-50 | |
| | | 55-100 | |

| D | d | d ₁ | MXP | I | I ₁ | L | ③ |
|----|----|----------------|--------------|----|----------------|-------------|------------|
| 25 | 13 | 14 | M8X 1.25 | 12 | 8 | 22-80.0 | M8X20 |
| | | | | | 14 | 31 | 80.1-100.0 |
| | | | | 51 | | 100.1-120.0 | M8X65 |
| | | | | 76 | 120.1-200.0 | M8X90 | |
| 38 | 16 | 17 | M10X 1.50 | 16 | 9 | 22.0-80.0 | M10X25 |
| | | | | | 17 | 33 | 80.1-110.0 |
| | | | | 53 | | 100.1-120.0 | M10X70 |
| | | | | 83 | 120.1-200.0 | M10X100 | |
| 50 | 18 | 20 | M12X 1.75 | 18 | 7 | 22-80.0 | M12X25 |
| | | | | | 20 | 30 | 80.1-100.0 |
| | | | | 50 | | 100.1-120.0 | M12X70 |
| | | | | 80 | 120.1-200.0 | M12X100 | |
| 60 | 18 | 20 | M12X 1.75 | 18 | 7 | 22.0-80.0 | M12X25 |
| | | | | | 20 | 30 | 80.1-100.0 |
| | | | | 50 | | 100.1-120.0 | M12X70 |
| | | | | 80 | 120.1-200.0 | M12X100 | |


Empfehlung:

1. D=25, wenn Preßkraft <100T
2. D=38, wenn Werkzeuglänge <1500mm
3. D=50, wenn Werkzeuglänge 1500-3000mm
4. D=60, wenn Werkzeuglänge >3000mm

Recommended:

1. Use D=25 when the press tonnage below 100T
2. Use D=38 when the length of die is less than 1500mm
3. Use D=50 when the length of die is the range of 1500-3000mm
4. Use D=60 when the length of die more than 3000mm

Bestellnummer / Order Number

| | | | | | | | | | |
|---|--------------------------|---|-----|---|---------|---|----|---|---------|
|  | Bestellnr. / Catalog No. | - | L | - | Color ② | - | T | - | Color ① |
| | SZ-XWD25 | - | 80 | - | R | - | 20 | - | R |
| | SZ-XWDR25 | - | 100 | - | R | - | - | - | - |
| | SZ-XWDP25 | - | - | - | - | - | 20 | - | R |

