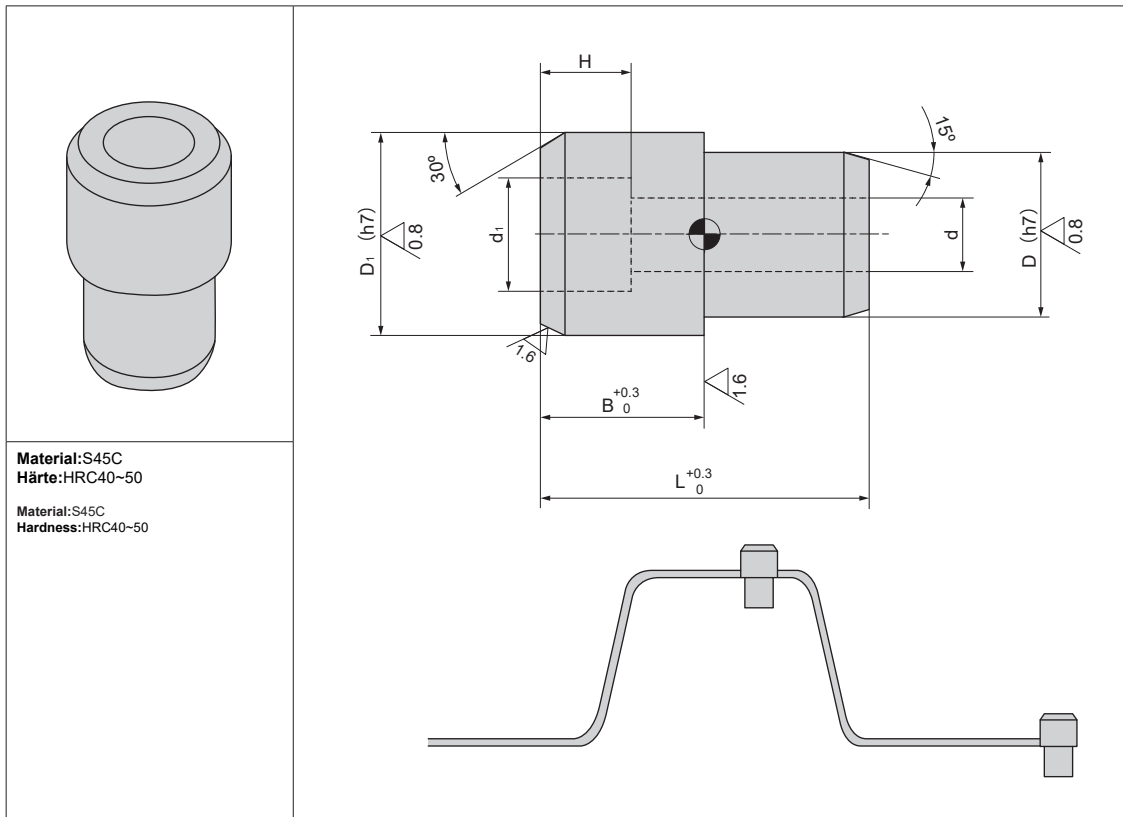



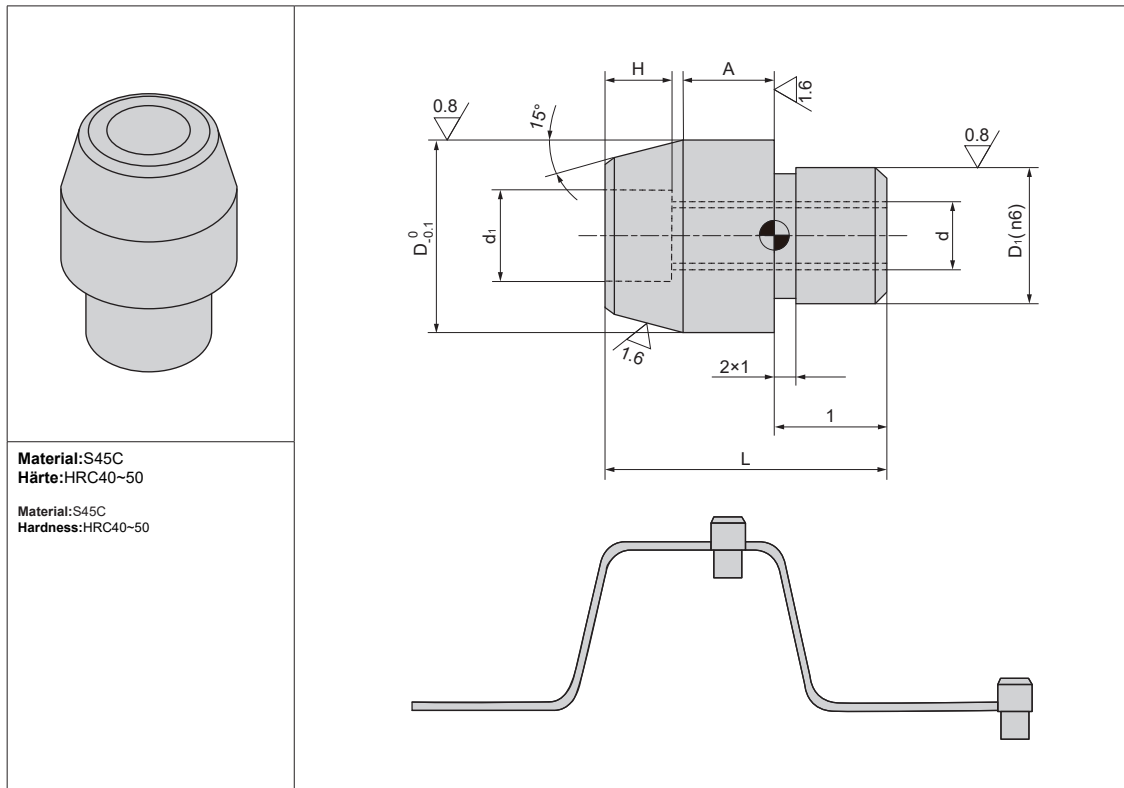
SZ-DWXT


Bestell-Nr. Catalog No.		D ₁ (h7)		L	B	d	d ₁	H	
Typ Type	D(h7)								
SZ-DWXT	20	0 -0.021	25	0 -0.021	40	20	9	14	11
	25		32		50	25	11	17.5	12
	32	0 -0.025	40	0 -0.025	70	35	11	17.5	24

Bestellnummer / Order Number


 -
SZ-DWXT - **25**




DM-DWXT


Bestell-Nr. Catalog No.	D	D ₁ (n6)		l	d	d ₁	H	A	L
DM-DWXT	>14~16	10	0 -0.008	8	M6	8	6	3	18
								5	20
	>16~18	12	0 -0.011	10	M8	12	8	8	25
								5	24
	>18~22	16	0 -0.013	16	M10	16	10	5	28
								8	31
	>22~30	20	0 -0.013	20	M12	20	11	5	32
								8	35

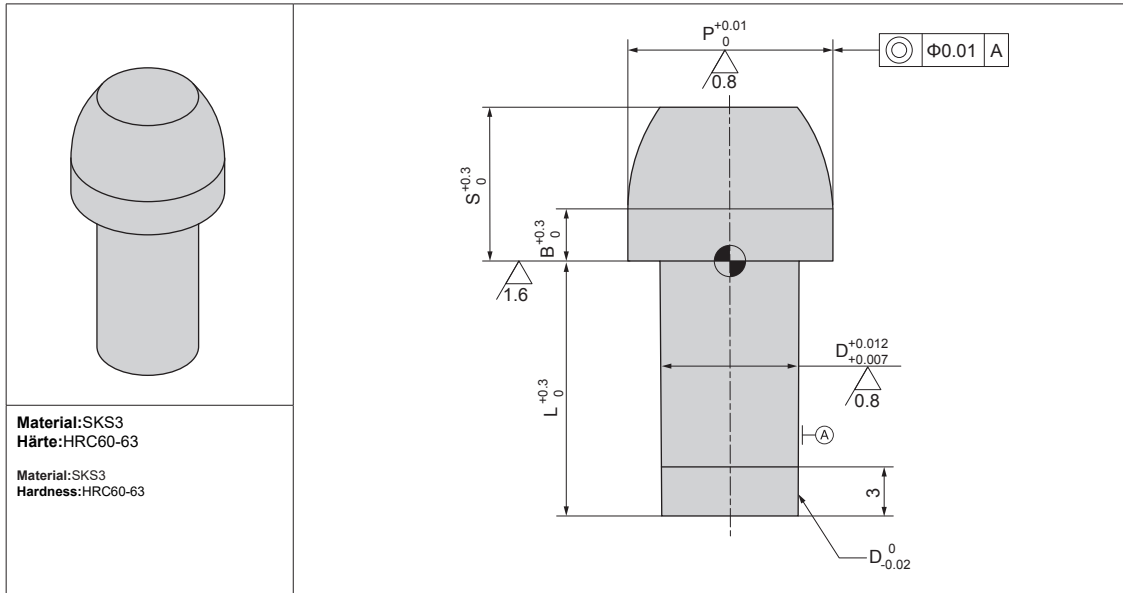
Hinweis: Für Passstiftöffnungen verwenden

Note: Apply to dowel hole

Bestellnummer / Order Number



 Bestellnr. / Catalog No. - -
DM-DWXT - 20 - 27



SZ-DZXM


Bestell-Nr. Catalog No.		L	0,01mm-Schritte / 0,01mm increments		B	S
Typ Type	D		min.	P max.		
SZ-DZXM	1	12	1.50	3.00	1	4
	2		2.50	4.00		5
	3		4.00	6.00	2	6
	4		5.00	7.00		7
	5	15	6.00	8.00	3	8
	6		7.00	9.00		9
	8	18	9.00	13.00		
	10		11.00	15.00		

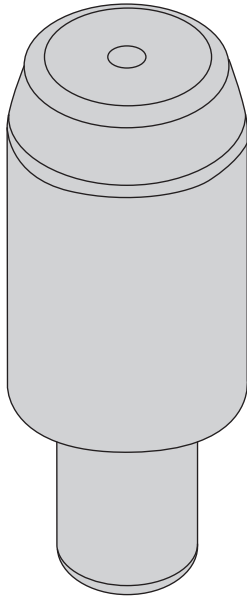
Bestellnummer / Order Number

	Bestellnr. / Catalog No.	-	L	-	P
	SZ-DZXM5	-	12	-	7.20

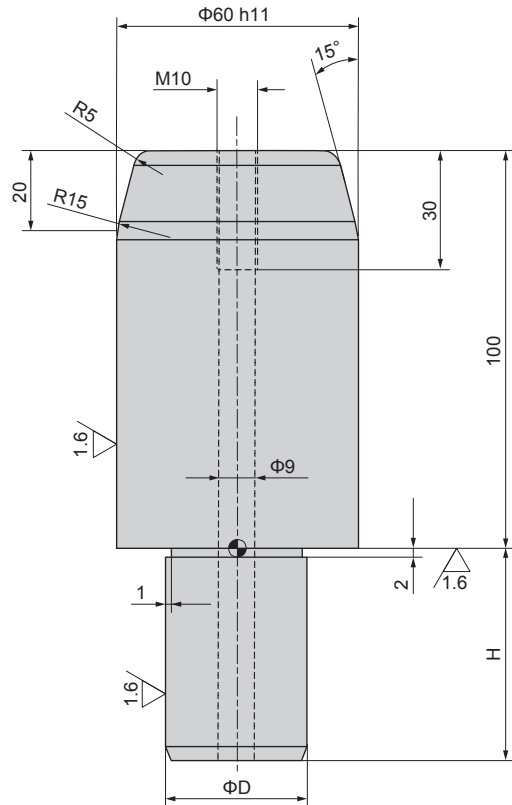




DM-DWXC



Material: S45C
Härte: HRC40-50
Material: S45C
Hardness: HRC40-50



Bestell-Nr. Catalog No.		H
Typ Type	D	
DM-DWXC	Entsprechend der Stiftbohrung im Werkzeug According to the diameter of press die-pin hole	1.5*D

Bestellnummer / Order Number

	Bestellnr. / Catalog No.	-	D
	DM-DWXC	-	40

