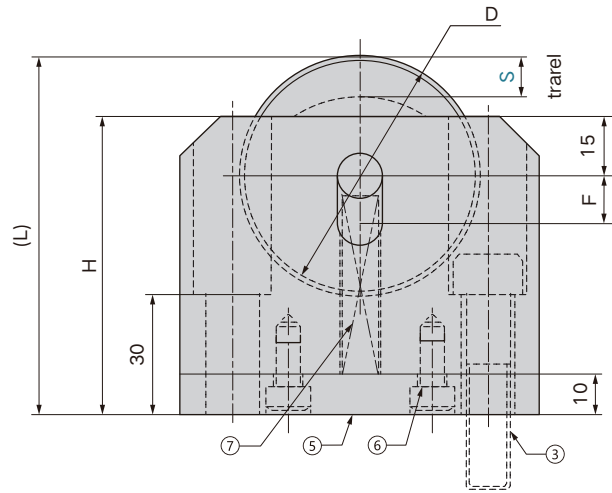
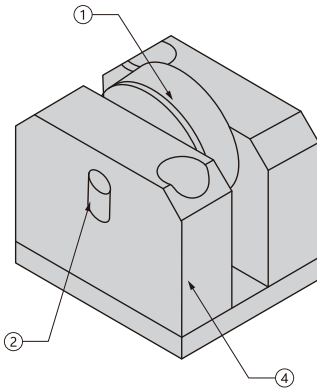


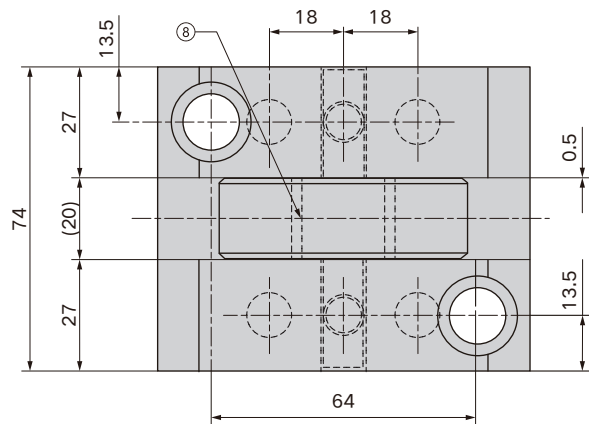
SZ-DLR


Bauteile:

| | | |
|-----------------------------|-----|--------------------------------|
| 1. Rolle | 1 | SK3 HRC55-58 |
| 2. Rollenachse | 1 | SUJ2 HRC55-58 |
| 3. Innensechskantschraube | 2 | LB12-50 |
| 4. Haltestück | 1/1 | SS400 |
| 5. Druckplatte | 1 | SS400 |
| 6. Innensechskantschraube | 4 | CB6-15 |
| 7. Feder | 2 | S=10 SWF20-45 S=20 SWR21-65 |
| 8. Selbstschmierende Buchse | 1 | PTFE-Harz |

Component parts:

| | | |
|-----------------------------|-----|--------------------------------|
| 1. Roll | 1 | SK3 HRC55-58 |
| 2. Roll shaft | 1 | SUJ2 HRC55-58 |
| 3. Hexagon socket head bolt | 2 | LB12-50 |
| 4. Holding block | 1/1 | SS400 |
| 5. Pressure plate | 1 | SS400 |
| 6. Hexagon socket head bolt | 4 | CB6-15 |
| 7. Spring | 2 | S=10 SWF20-45 S=20 SWR21-65 |
| 8. Self-lubricating bushing | 1 | Resin contain filler PTFE |



| Bestell-Nr Catalog No. | | D | H | F | (L) | Kgf(min) | Kgf(max) |
|---------------------------|----|----|----|----|-----|----------|----------|
| Typ Type | S | | | | | | |
| SZ-DLR | 10 | 60 | 75 | 12 | 90 | 16.8 | 44.8 |
| | 20 | 80 | 95 | 22 | 120 | 11.0 | 47.8 |

Bestellnummer / Order Number



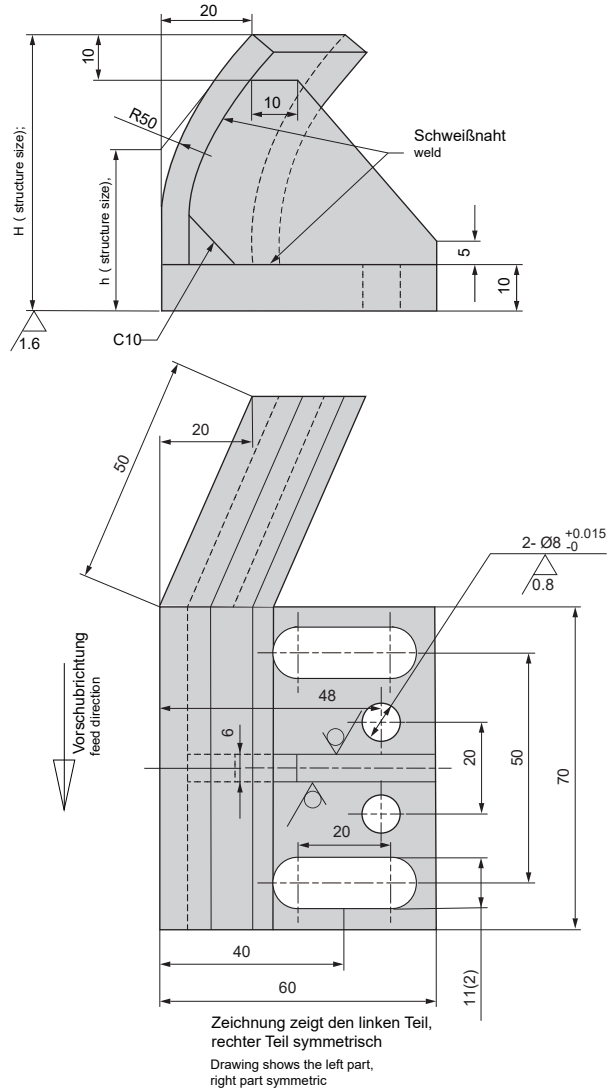
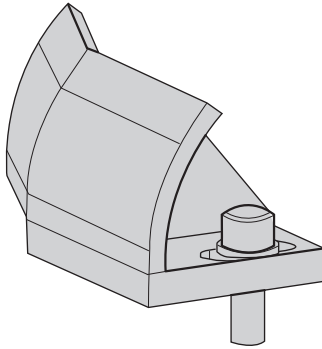
Bestellnr. / Catalog No.

SZ-DLR10





DM-DLKM



Material: Q235
Befestigung: 2 Schrauben M10X30(GB70)
 2 Federscheiben d=10(GB93)
 2 Stifte 8X25(GB120)

Material: Q235
Fixation: 2 bolts M10X30(GB70)
 2 spring washer d=10(GB93)
 2 pin 8X25 (GB120)

Bestellnummer / Order Number

| | | | | | | | |
|--|--------------------------|---|----|---|-----|---|-----|
| | Bestellnr. / Catalog No. | - | h | - | H | - | L/R |
| | DM-DLKM | - | 35 | - | 100 | - | R |

