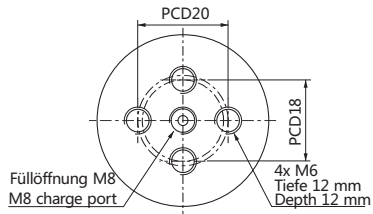
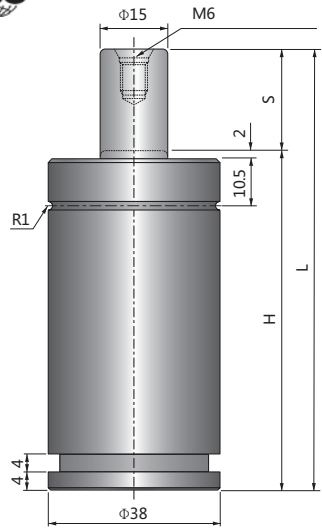


NC250 NC Typ/NC Type



Standard Gasdruckfedern nach ISO 11901 ISO11901 Standard Cylinders

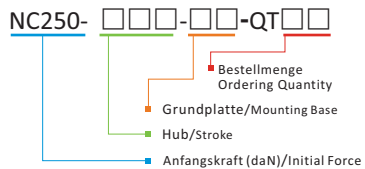
Der Typ NC entspricht der Norm ISO 11901
Zylinderdurchmesser von 38 mm (250 daN) bis 195 mm (10000daN)
Schlauchanschluss erhältlich ab NC500.

NC type corresponds to ISO11901 standard and keep the compatibility.
The size starts from cylinder dia. 38 mm (250 daN) to 195 mm (10000 daN).
Hose connection is available from NC500.

CODE	S	H	L	Anfangs- kraft Initial Force (daN)	Endkraft Final Force (daN)
NC250-10	10	60	70	250	400
NC250-13	12.7	62.7	75.4		
NC250-16	16	66	82		
NC250-19	19	69	88		
NC250-25	25	75	100		
NC250-38	38.1	88.1	126.2		
NC250-50	50	100	150		
NC250-63	63.5	113.5	177		
NC250-80	80	130	210		
NC250-100	100	150	250		
NC250-125	125	175	300		

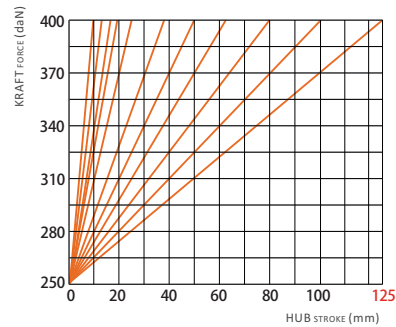
ohne Schlauchanschluss
Not available Hose-connection

Bestellcode Ordering



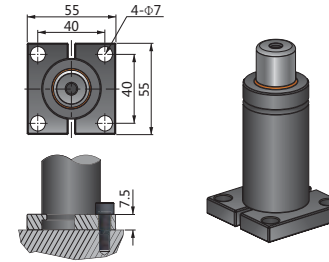
NC250-050-BH-QT04

Federkraft-Hub-Diagramm Spring Force - Stroke Diagram

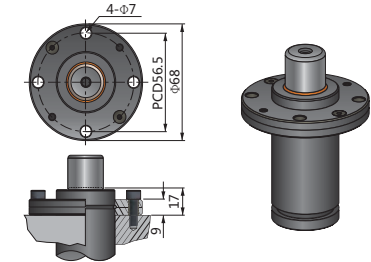


NC250 Einbaubeispiel/ Befestigungsvarianten(Mounting Bases)

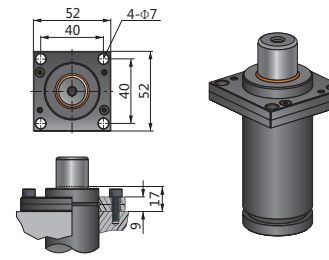
BH-250NC



BC-250NC



BP-250NC



BF-BB-250NC

