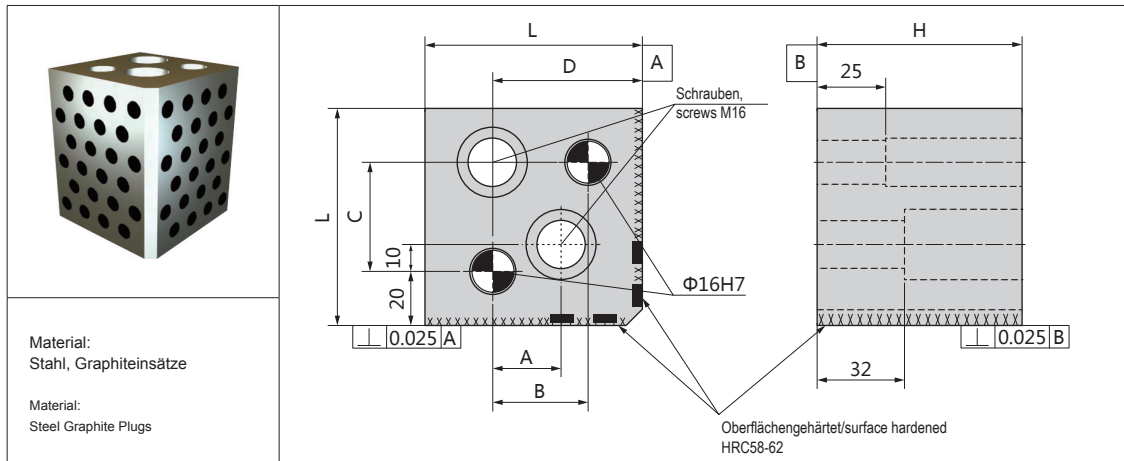


**NG--GB**


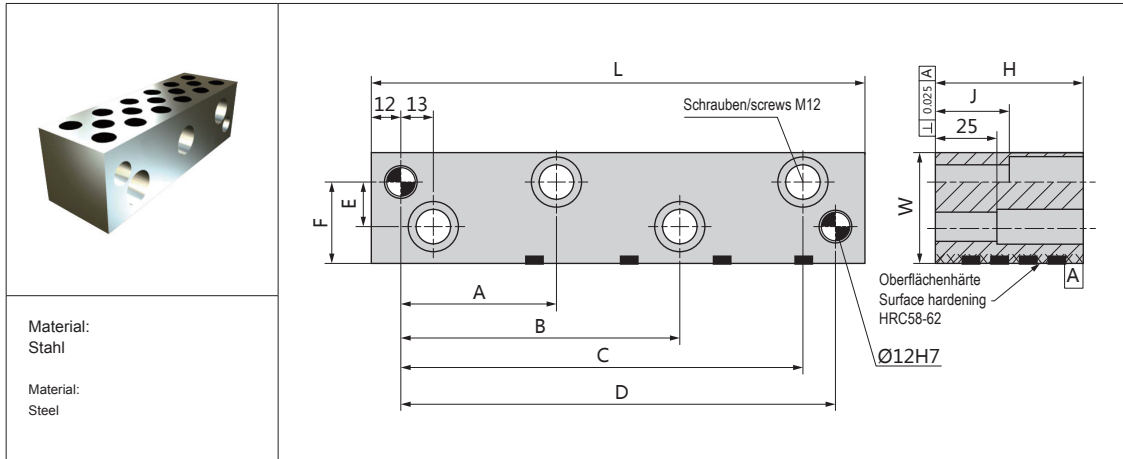
Katalog-Nr. / Catalog No.	H	A	B	C	D	L
		±0.25	±0.013	±0.013	±0.25	
NG80GB75	75	25	35	40	55	80
NG80GB100	100					
NG80GB125	125					
NG95GB75	75	40	50	55	70	95
NG95GB100	100					
NG95GB125	125					
NG120GB75	75	65	75	80	95	120
NG120GB100	100					
NG120GB125	125					

**Bestellnummer / Order Number**

 Bestellung  
Order

Katalog-Nr. / Catalog No.

**NG 95GB 100**


**NG45GC**


Katalog-Nr. / Catalog No.	(N) BOHRUNGEN / HOLES	L	A	B	C	D	E	F	H	J	W
NG45GC60-75	2	75	-	-	38	51	18	33	60	30	45
NG45GC60-100	2	100	-	-	63	76					
NG45GC60-125	3	125	-	50.5	88	101					
NG45GC60-150	3	150	-	63.0	113	126					
NG45GC60-175	3	175	-	75.5	138	151					
NG45GC60-200	4	200	63	113.0	163	176					
NG45GC60-225	4	225	73	128.0	188	201					
NG45GC60-250	4	250	83	153.0	213	226					
NG45GC75-75	2	75	-	-	38	51	18	33	75	30	45
NG45GC75-100	2	100	-	-	63	76					
NG45GC75-125	3	125	-	50.5	88	101					
NG45GC75-150	3	150	-	63.0	113	126					
NG45GC75-175	3	175	-	75.5	138	151					
NG45GC75-200	4	200	63	113.0	163	176					
NG45GC75-225	4	225	73	128.0	188	201					
NG45GC75-250	4	250	83	153.0	213	226					





**NG45GC**

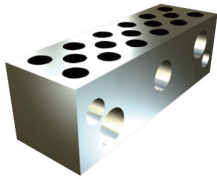
Katalog-Nr. / Catalog No.	(N) BOHRUNGEN / HOLES	L	A	B	C	D	E	F	H	J	W
NG45GC40-75	2	75	—	—	38	51	18	33	40	15	45
NG45GC40-100	2	100	—	—	63	76					
NG45GC40-125	3	125	—	50.5	88	101					
NG45GC40-150	3	150	—	63.0	113	126					
NG45GC40-175	3	175	—	75.5	138	151					
NG45GC40-200	4	200	63	113.0	163	176					
NG45GC40-225	4	225	73	128.0	188	201					
NG45GC40-250	4	250	83	153.0	213	226					
NG45GC45-75	2	75	—	—	38	51	18	33	45	25	45
NG45GC45-100	2	100	—	—	63	76					
NG45GC45-125	3	125	—	50.5	88	101					
NG45GC45-150	3	150	—	63.0	113	126					
NG45GC45-175	3	175	—	75.5	138	151					
NG45GC45-200	4	200	63	113.0	163	176					
NG45GC45-225	4	225	73	128.0	188	201					
NG45GC45-250	4	250	83	153.0	213	226					
NG45GC50-75	2	75	—	—	38	51	18	33	50	30	45
NG45GC50-100	2	100	—	—	63	76					
NG45GC50-125	3	125	—	50.5	88	101					
NG45GC50-150	3	150	—	63.0	113	126					
NG45GC50-175	3	175	—	75.5	138	151					
NG45GC50-200	4	200	63	113.0	163	176					
NG45GC50-225	4	225	73	128.0	188	201					
NG45GC50-250	4	250	83	153.0	213	226					

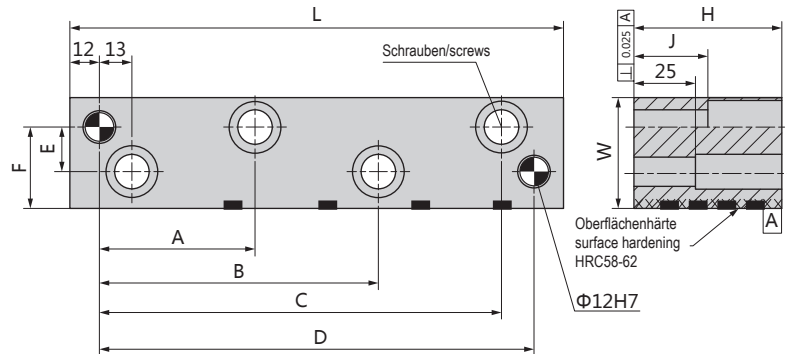
**Bestellnummer / Order Number**

Bestellung / Order  -

**NG 45GC45 - 250**



**NG60GC**

 Material:  
 Stahl

 Material:  
 Steel


Katalog-Nr. / Catalog No.	(N) BOHRUN- GEN / (N) HOLES	L	A	B	C	D	E	F	H	J	W	Katalog-Nr. / Catalog No.	(N) BOH- RUNGEN / (N) HOLES	L	A	B	C	D	E	F	H	J	W
NG60GC50-75	2	75	-	-	38	51	33	48	50	30	60	NG60GC80-75	2	75	-	-	38	51	33	48	80	30	60
NG60GC50-100	2	100	-	-	63	76						NG60GC80-100	2	100	-	-	63	76					
NG60GC50-125	3	125	-	50.5	88	101						NG60GC80-125	3	125	-	50.5	88	101					
NG60GC50-150	3	150	-	63.0	113	126						NG60GC80-150	3	150	-	63.0	113	126					
NG60GC50-175	3	175	-	75.5	138	151						NG60GC80-175	3	175	-	75.5	138	151					
NG60GC50-200	4	200	63	113.0	163	176						NG60GC80-200	4	200	63	113.0	163	176					
NG60GC50-225	4	225	73	128.0	188	201						NG60GC80-225	4	225	73	128.0	188	201					
NG60GC50-250	4	250	83	153.0	213	226						NG60GC80-250	4	250	83	153.0	213	226					
NG60GC60-75	2	75	-	-	38	51						NG60GC100-75	2	75	-	-	38	51					
NG60GC60-100	2	100	-	-	63	76						NG60GC100-100	2	100	-	-	63	76					
NG60GC60-125	3	125	-	50.5	88	101	NG60GC100-125	3	125	-	50.5	88	101										
NG60GC60-150	3	150	-	63.0	113	126	NG60GC100-150	3	150	-	63.0	113	126										
NG60GC60-175	3	175	-	75.5	138	151	NG60GC100-175	3	175	-	75.5	138	151										
NG60GC60-200	4	200	63	113.0	163	176	NG60GC100-200	4	200	63	113.0	163	176										
NG60GC60-225	4	225	73	128.0	188	201	NG60GC100-225	4	225	73	128.0	188	201										
NG60GC60-250	4	250	83	153.0	213	226	NG60GC100-250	4	250	83	153.0	213	226										

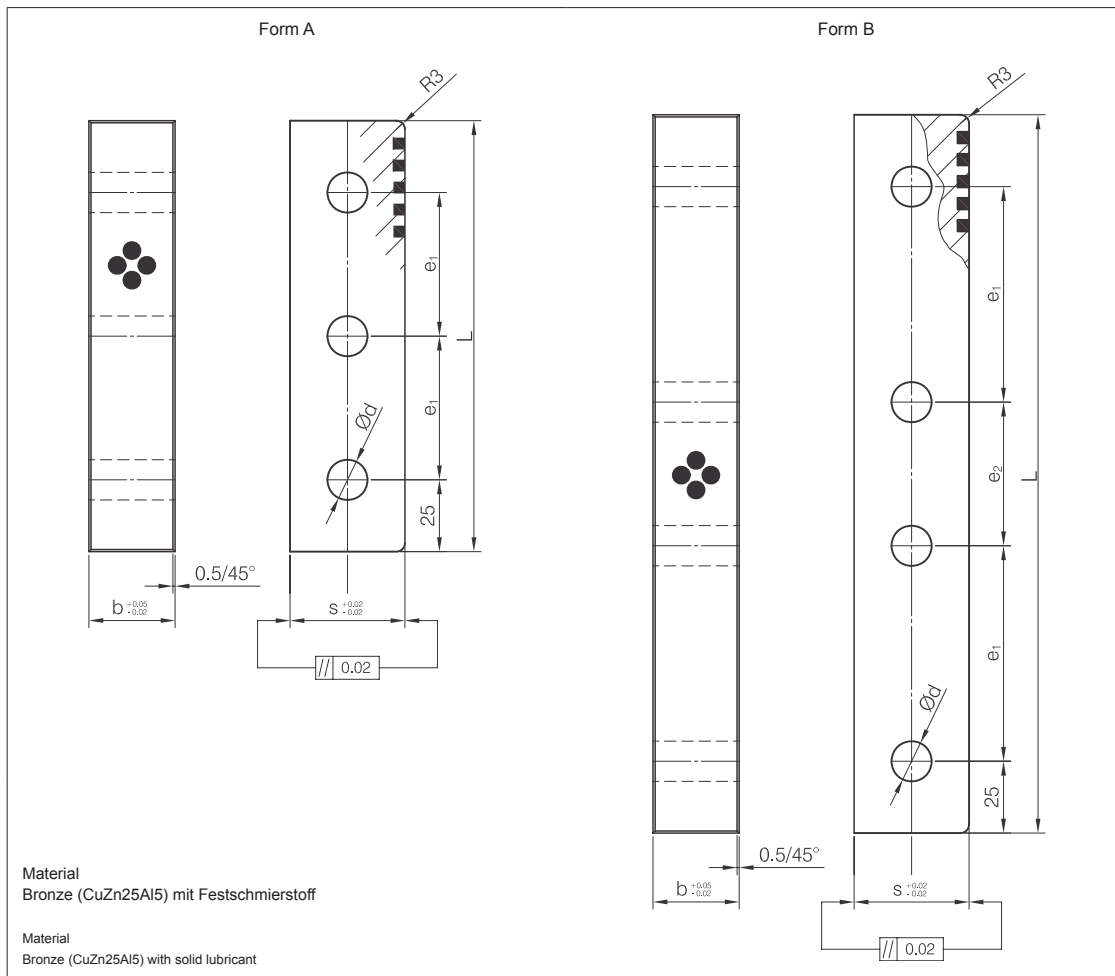
**Bestellnummer / Order Number**

 Bestellung  
 Order

Katalog-Nr. / Catalog No. -

L

**NG 60GC60**
**- 125**


**4-XXXXXX-208**


e <sub>1</sub>	e <sub>2</sub>	d	b	L	s	Form
50	-	14	30	150	40	A
75	50			200		B
	-			250		B
50	-	40	40	150		A
75	50			200		B
	-			250		B
50	-	18	45	150	50	A
75	50			200		B
	-			250		B
50	-	55	55	150		A
75	50			200		B
	-			250		B
50	-	60	60	150	A	
75	50			200	B	
	-			250	B	
50	-	70	70	150	A	
75	50			200	B	
	-			250	B	

**Bestellnummer / Order Number**

Bestellung / Order:  Katalog-Nr. / Catalog No.:  -  -  Typ

