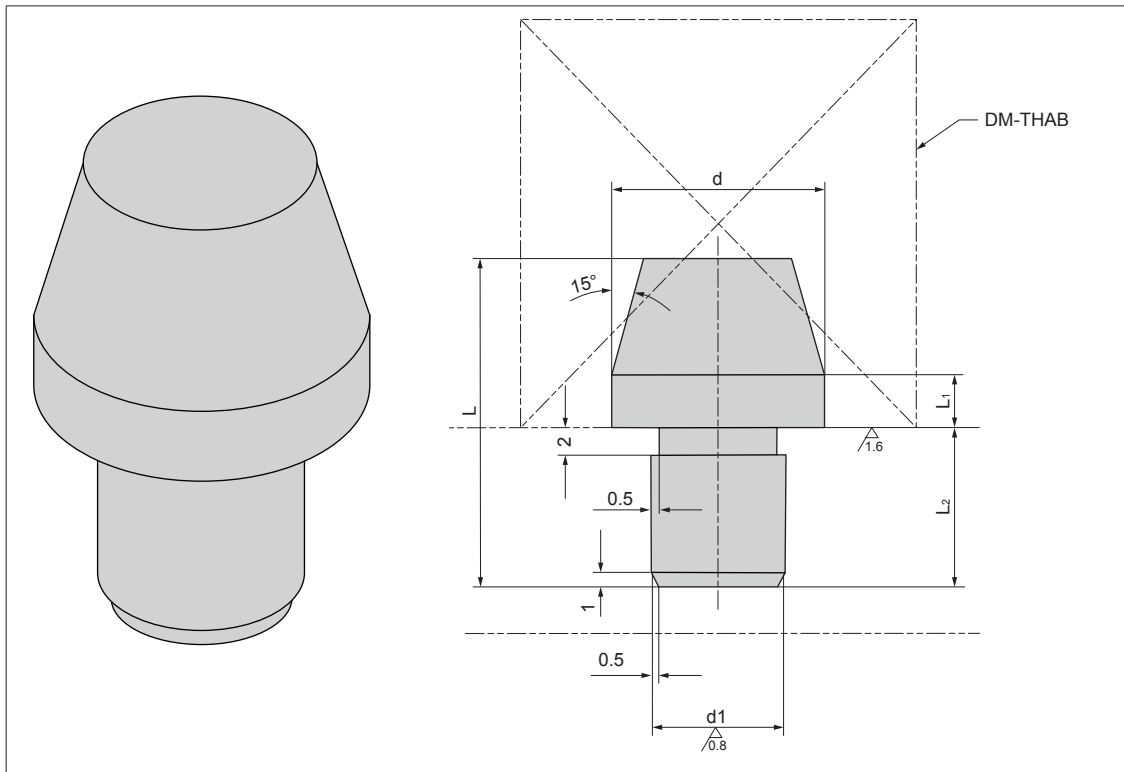


DM-THDXA



Material: C45
Härte: HRC38-42


Hinweise
Verwendung mit DM-THAB

Material: C45
Hardness: HRC38-42

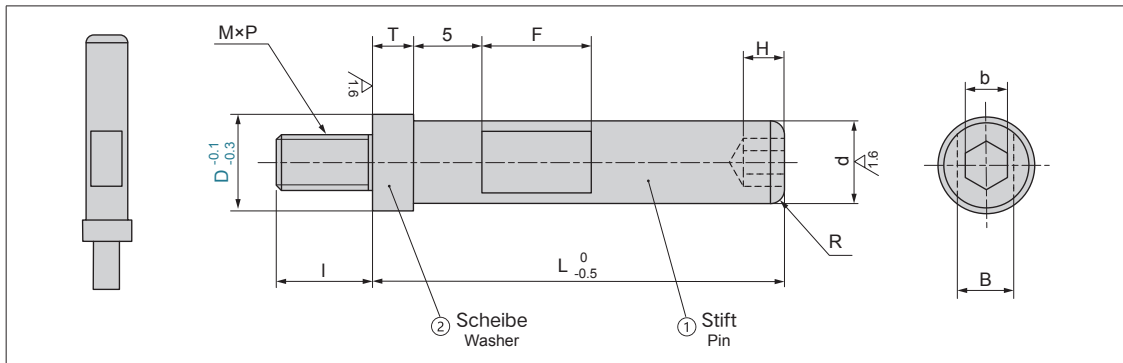
Instructions
Used with DM-THAB

Bestell-Nr. Catalog No.	D Innendurchmesser Feder Spring slot diameter	d	d1 (k6)		L	L ₁	L ₂
DM-THDXA	25	12.5	8	+0.010 +0.001	25	4	10
	32	16	10				12
	40	20	16	+0.012 +0.001	30	5	18
	50	25			35		
	63	31.5	20	+0.015 +0.002	40	8	22

Bestellnummer / Order Number

 -
DM-THDXA - **25**



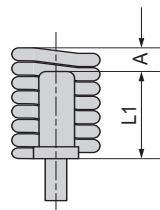
SZ-THXA


Bestell-Nr. Catalog No.		L Abmessung Dimensions span 5mm	MXP	I	b	H	B	F	R	T	d
Type	D										
SZ-THXA	7	20-50	4X0.7	7	3	3	4	8	1	3	6
	8										
	9	20-75	5X0.8	8	4	3	6	8	1.5	4	8
	10										
	11	20-85	6X1.0	10	5	4	8	8	2	5	10
	12.5										
	13.5	20-125	8X1.25	17 (12)	6	4	11	10	2.5	5 (10)	13
	15										
	16	30-185	10X1.5	20 (15)	8	5	14	12	3	5 (10)	16
	17.5										
	19	30-215	12X1.75	23 (18)	10	6	17	14	3	5 (10)	20
	20										
	22	50-215	16X2.0	27 (22)	14	8	22	16	3	5 (10)	25
25											
27.5											
30											
33											

Material: C45
Härte: HRC38-42

Material : C45
Hardness : HRC38-42

Example:



$A \geq 10$

L1 beträgt mehr als die Hälfte der Ausgangslänge der Feder, jedoch mindestens 20 mm

Position length L1 is more than half of spring free length, 20mm at least

Bestellnummer / Order Number


Bestellnr. / Catalog No.

- D

- L

SZ-THXA

-

25

-

60

