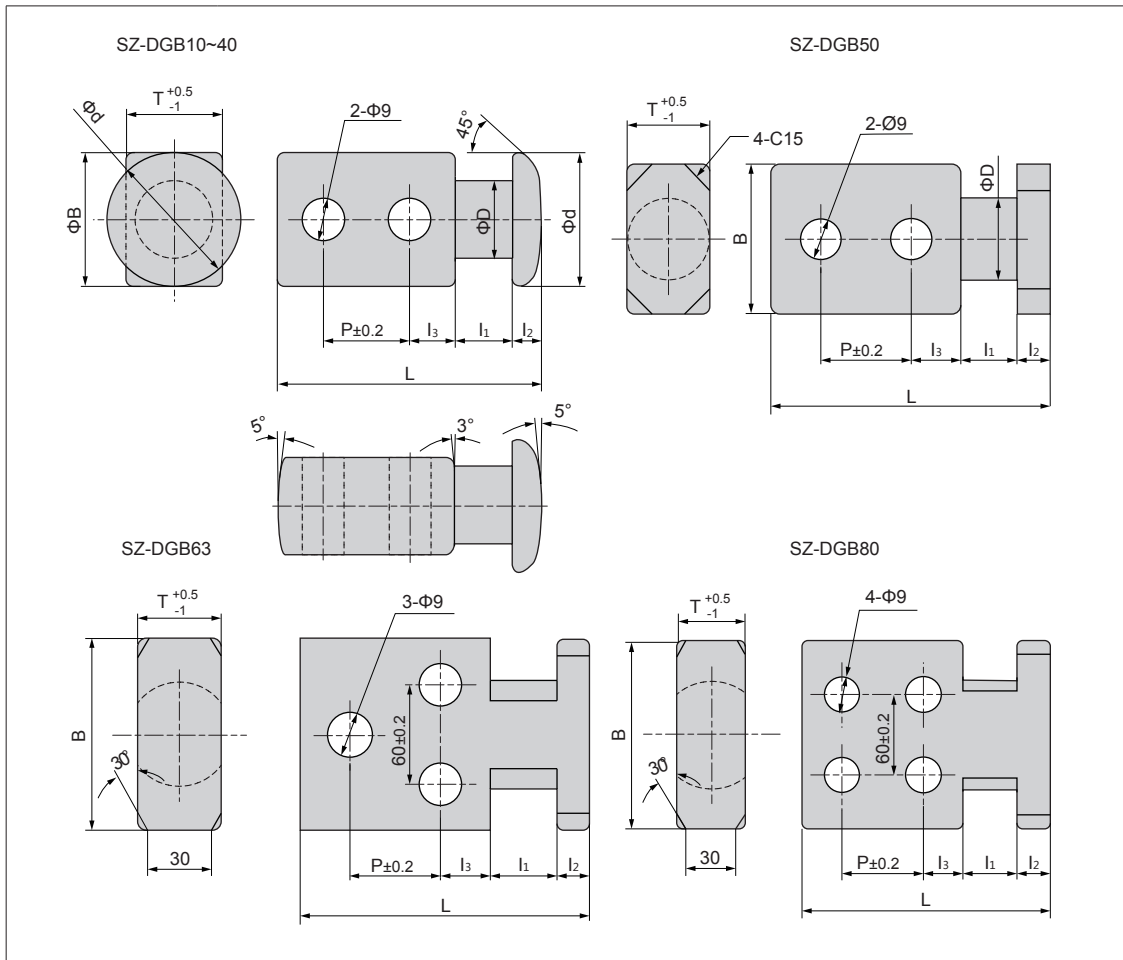



SZ-DGB



Material:SS400 Die Befestigungsschrauben sollten die Festigkeitsklasse 12.9 oder 10.9 haben.
Material:SS400 Mounting screws should be used strength class 12.9 or 10.9 of the screw.

Bestell-Nr. Catalog No.		d	B	T	L	l ₁	l ₂	l ₃	P	g	Zulässige Belastung Allowable load (kg)
Typ Type	D										
SE-DGB	10	28	28	18	50	10	8	8	16	7	160
	12	32	32	20	56	10	8	10	18	9	360
	16	36	36	24	67	13	8	12	22	11	460
	20	40	40	26	88	18	10	15	30	14	560
	25	48	48	35	92	20	12	15	30	14	670
	32	55	55	40	118	25	13	20	40	18	1240
	40	70	70	50	138	30	15	24	45	22	1950
	50	-	90	50	170	35	20	30	55	26	2800
	63	-	115	50	175	40	20	30	55	26	4000
80	-	140	50	185	40	25	30	60	26	5200	

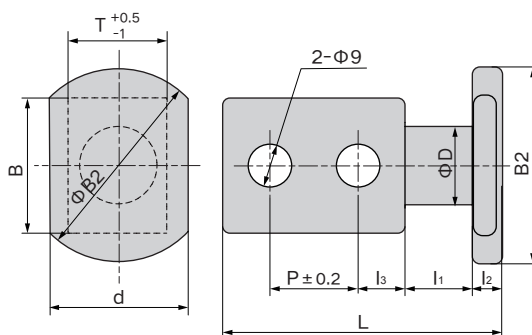
Bestellnummer / Order Number


SZ-DGB10

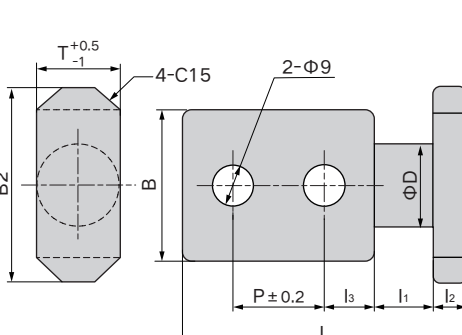


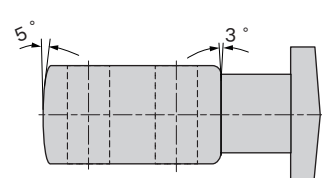
SZ-DGBL

SZ-DGBL10~40

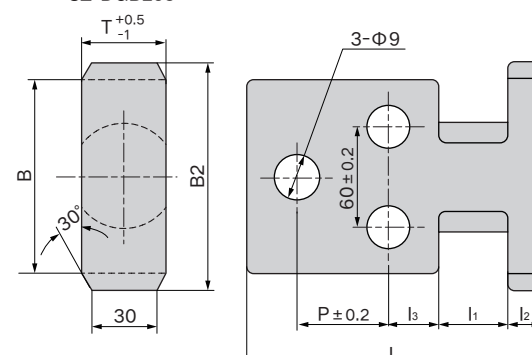


SZ-DGBL50

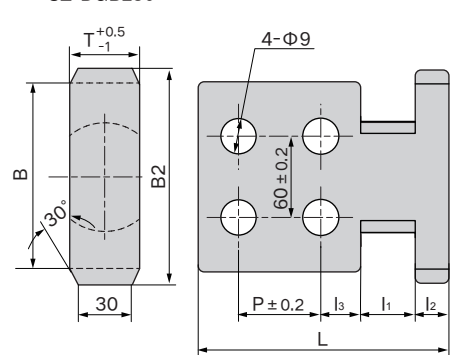




SZ-DGBL63



SZ-DGBL80



Material: SS400 Die Befestigungsschrauben sollten die Festigkeitsklasse 12.9 oder 10.9 haben.

Material: SS400 Mounting screws should be used strength class 12.9 or 10.9 of the screw.

Bestell-Nr. Catalog No.		d	B	B2	T	L	l ₁	l ₂	l ₃	P	g	Zulässige Belastung Allowable load (kg)
Typ Type	D											
SZ-DGBL	10	28	28	38	18	61	20	9	8	16	7	160
	12	32	32	44	20	67	20	9	10	18	9	360
	16	36	36	50	24	78	20	12	12	22	11	460
	20	40	40	56	26	97	25	12	15	30	14	560
	25	48	48	68	35	98	25	13	15	30	14	670
	32	55	55	77	40	125	30	15	20	40	18	1240
	40	70	70	100	50	143	35	15	24	45	22	1950
	50	-	90	120	50	170	35	20	30	55	26	2800
	63	-	115	155	50	175	40	20	30	55	26	4000
80	-	140	180	50	185	40	25	30	60	26	5200	

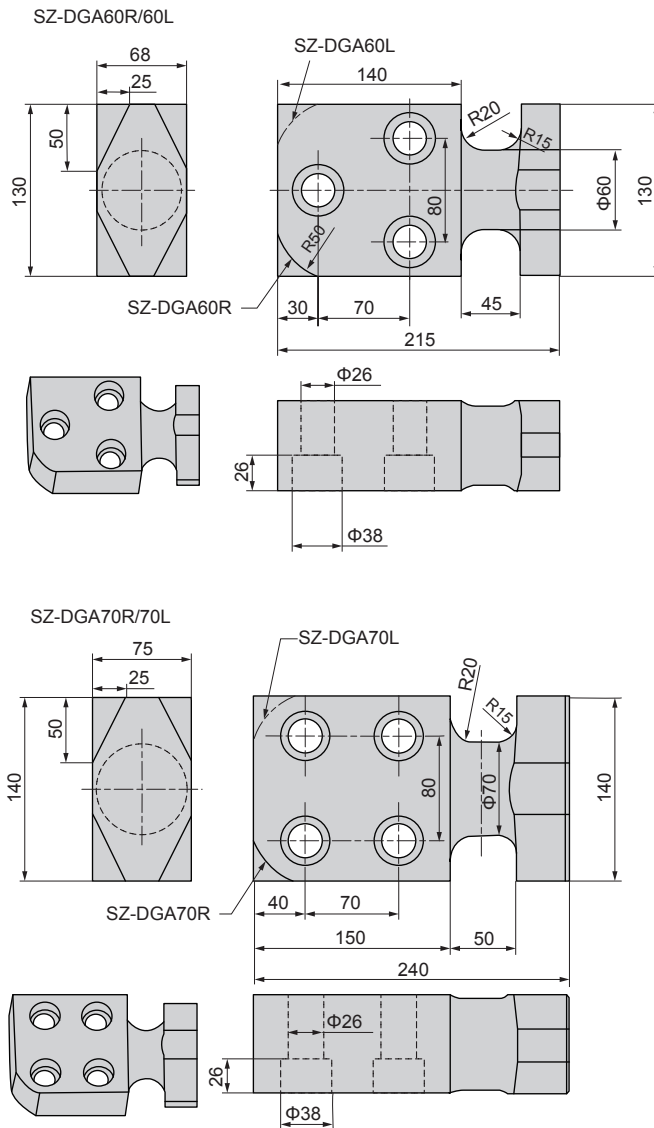
Bestellnummer / Order Number

SZ-DGBL10





SZ-DGA



Material: SS400

Material: SS400

Die Befestigungsschrauben sollten die Festigkeitsklasse 12.9 oder 10.9 haben.

Mounting screws should be used strength class 12.9 or 10.9 of the screw.

Bestell-Nr. Catalog No.		(kg) Zulässige Belastung Allowable load
SZ-DGA	60R	4300
	60L	
	70R	4800
	70L	

Bestellnummer / Order Number



Bestellnr. / Catalog No.

SZ-DGA60R

