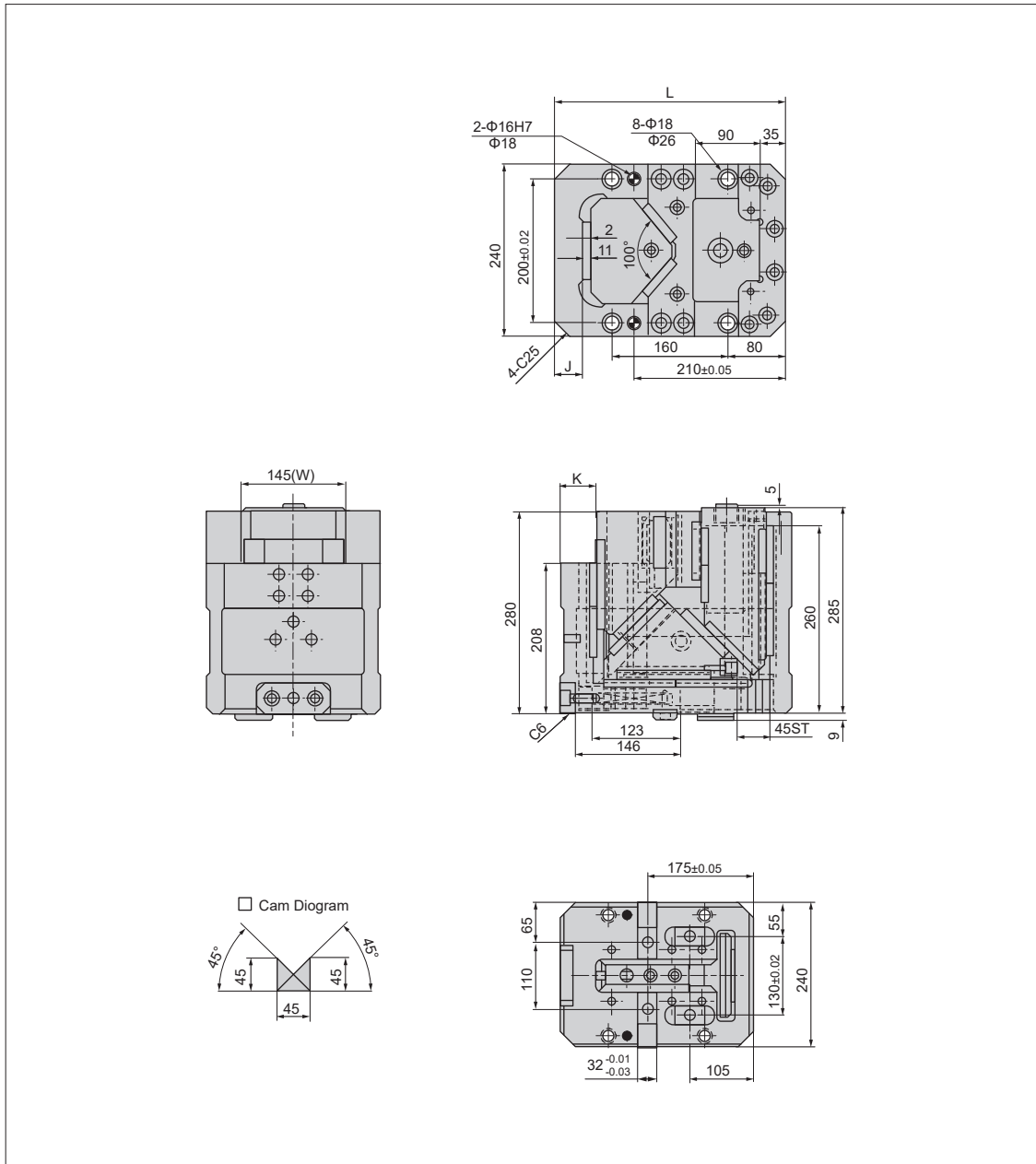


KRCVS145-45

normale Konstruktion / Regular Type

KRCVH145-45

sehr steife Konstruktion / Highly Rigid Type


Tabelle Schieber
Table of Cam Structure

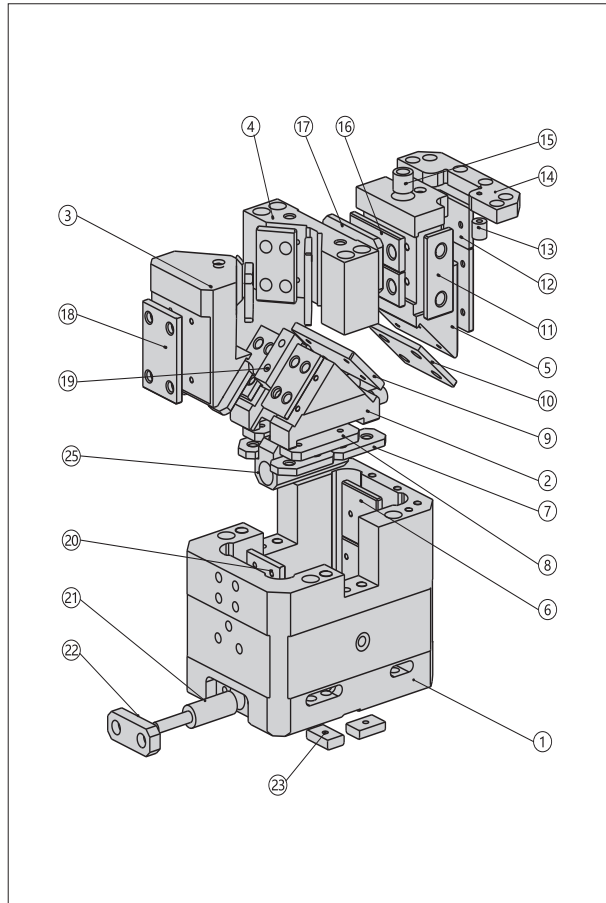
Bestellnr. / Catalog No.	W	J	K	L	Arbeitsweg / Working Stroke	Gewicht (kg) / Weight (kg)
KRCVS145-45	145	25	35	305	45	124.0
KRCVH145-45	145	40	50	320		



**Übersicht Schieberkraft / Rückzugskraft
Table of Cam Force**


Typ / Type	Federkraft (N/kgf) / Spring Force (N/kgf)		Arbeitskraft (kN/tonF) / (kN/tonf) Work Force
	Anfangskraft / Initial Load	Endkraft / Final Load	
GK	1407 / 143.5	2072 / 211.3	73.5 / 7.5

Nr. / No.	Beschreibung / Description	Anzahl / Qty	Material und Anmerkung / Material and Remark
①	Aufnahme / Cam Holder	1	QT450
②	Schieber A / Cam Slider A	1	42CrMo+Festschmierstoff / graphite plugs
③	Schieber B / Cam Slider B	1	42CrMo+Festschmierstoff / graphite plugs
④	Stopblock / Stopping Block	1	45
⑤	Schieber / Cam Slider	1	45
⑥	Gleitplatte / Guide Block	2	Bronze+Festschmierstoff / graphite plugs
⑦	Gleitplatte / Guide Block	4	Bronze+Festschmierstoff / graphite plugs
⑧	Gleitplatte / Guide Block	2	42CrMo
⑨	Gleitplatte / Guide Block	1	42CrMo
⑩	Gleitplatte / Guide Block	1	Bronze+Festschmierstoff / graphite plugs
⑪	Gleitplatte / Guide Block	2	Bronze+Festschmierstoff / graphite plugs
⑫	Gleitplatte / Guide Block	2	42CrMo
⑬	Urethan-Dämpfer / Urethane Stopper	2	Urethan/Urethane
⑭	Federplatte / Spring Stop	1	45
⑮	Urethan-Dämpfer / Urethane Stopper	1	Urethan / Urethane
⑯	Gleitplatte / Guide Block	1	Bronze+Festschmierstoff / graphite plugs
⑰	Gleitplatte / Guide Block	1	42CrMo
⑱	Gleitplatte / Guide Block	1	42CrMo
⑲	Zwangsrückführung / Positive Return Follower		42CrMo
⑳	Gleitplatte / Guide Block	2	Bronze+Festschmierstoff / graphite plugs
㉑	Gasdruckfeder / Gas Spring	1	X 350-80-7.0
㉒	Federplatte / Spring Stop	1	45
㉓	Passfeder / Key	4	45
㉔	Federführungsbolzen / Spring guide block	1	45



Options-Code / Option Code	Beschreibung / Envelope	Modell / Model
GK	Gasdruckfeder KALLER / Fibro / Gas Spring by KALLER	X 350-80-7.0

Bestellnummer / Order Number

	Bestellnr. / Catalog No.	-	(W)	-	WT	-	Typ / Type
	KACL	-	145	-	45	-	GK
	KACL	-	145	-	45	-	GK

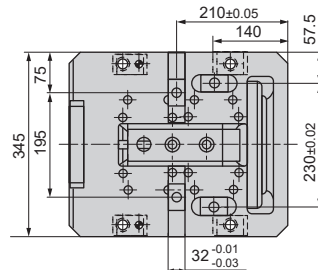
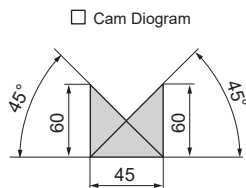
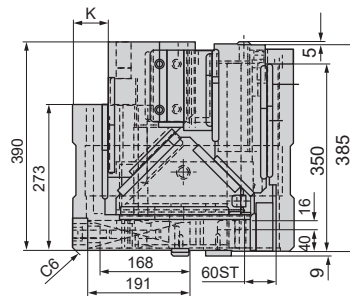
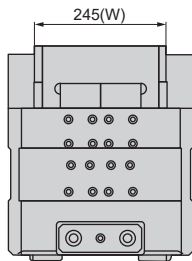
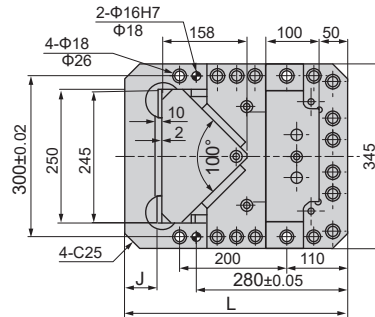


KRCVS245-60

normale Konstruktion / Regular Type

KRCVH245-60

sehr steife Konstruktion / Highly Rigid Type


Tabelle Schieber
Table of Cam Structure

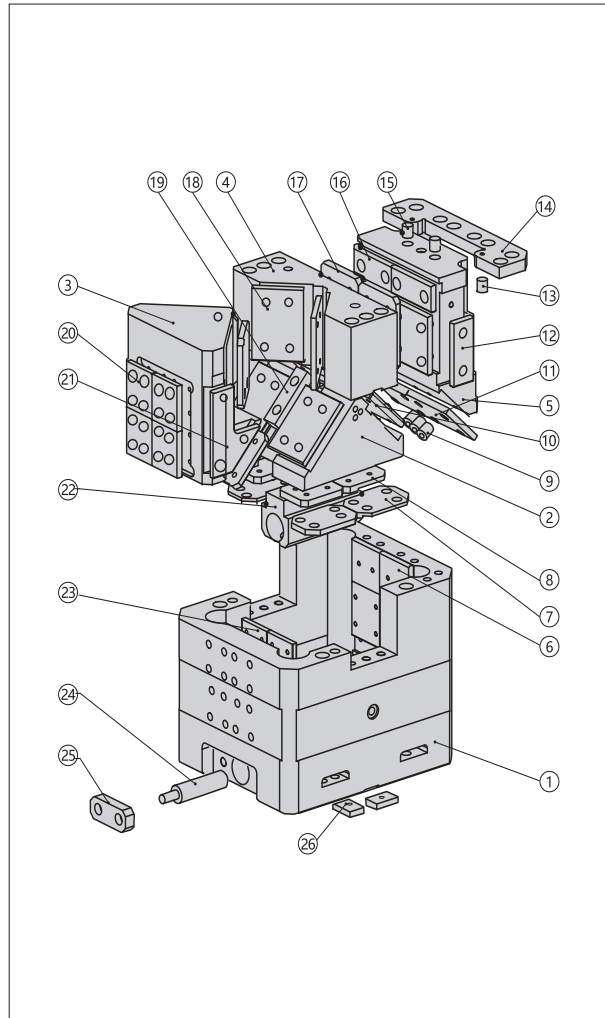
Bestellnr. / Catalog No.	W	J	K	L	Arbeitsweg / Working Stroke	Gewicht (kg)/ Weight (kg)
KRCVS245-60	245	35	45	390	60	295.0
KRCVH245-60	245	55	65	410		



Übersicht Schieberkraft / Rückzugskraft Table of Cam Force


Typ / Type	Federkraft (N/kgf) / Spring Force (N/kgf)		Arbeitskraft (kN/tonF) / (KN/tonf) Work Force
	Anfangskraft / Initial Load	Endkraft / Final Load	
GK	3436 / 350.4	4691 / 478.3	117.6 / 12.0

Nr./ No.	Beschreibung / Description	Anzahl / Qty	Material und Anmerkung / Material and Remark
①	Aufnahme / Cam Holder	1	QT450
②	Schieber A / Cam Slider A	1	42CrMo+Festschmierstoff / graphite plugs
③	Schieber B / Cam Slider B	1	42CrMo+Festschmierstoff / graphite plugs
④	Stoppblock / Stopping Block	1	45
⑤	Schieber / Cam Slider	1	45
⑥	Gleitplatte / Guide Block	2	Bronze+Festschmierstoff / graphite plugs
⑦	Gleitplatte / Guide Block	4	Bronze+Festschmierstoff / graphite plugs
⑧	Gleitplatte / Guide Block	2	42CrMo
⑨	Gleitplatte / Guide Block	6	UrethanUrethane
⑩	Gleitplatte / Guide Block	2	Bronze+Festschmierstoff / graphite plugs
⑪	Gleitplatte / Guide Block	2	Bronze+Festschmierstoff / graphite plugs
⑫	Gleitplatte / Guide Block	2	42CrMo
⑬	Urethan-Dämpfer / Urethane Stopper	2	UrethanUrethane
⑭	Federplatte / Spring Stop	1	45
⑮	Urethan-Dämpfer / Urethane Stopper	2	Urethan / Urethane
⑯	Gleitplatte / Guide Block	2	Bronze+Festschmierstoff / graphite plugs
⑰	Gleitplatte / Guide Block	2	42CrMo
⑱	Gleitplatte / Guide Block	2	42CrMo
⑲	Zwangsrückführung / Positive Return Follower	1	42CrMo
⑳	Gleitplatte / Guide Block	4	42CrMo
㉑	Gleitplatte / Guide Block	2	Bronze+Festschmierstoff / graphite plugs
㉒	Federführungsbolzen / Spring guide block	1	45
㉓	Gleitplatte / Guide Block	4	Bronze+Festschmierstoff / graphite plugs
㉔	Gasdruckfeder / Gas Spring	1	K750-80
㉕	Federplatte / Spring Stop	1	45
㉖	Passfeder / Key	4	45



Options-Code / Option Code	Beschreibung / Envelope	Modell / Model
GK	Gasdruckfeder KALLER / Fibro / Gas Spring by KALLER	K750-80

Bestellnummer / Order Number

	Bestellnr. / Catalog No.	-	(W)	-	WT	-	Typ / Type
	KACL	-	245	-	60	-	GK
	KACL	-	245	-	60	-	GK

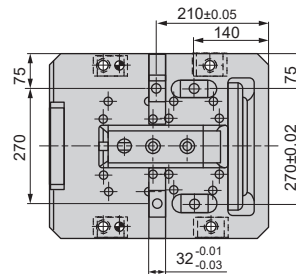
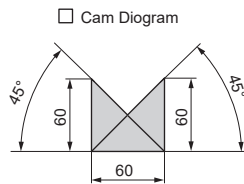
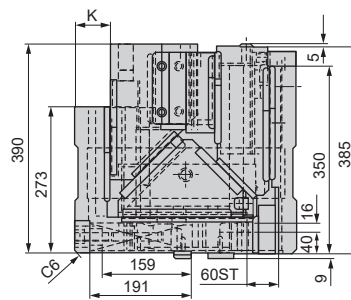
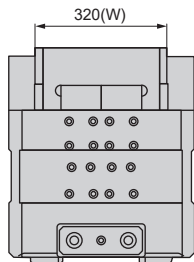
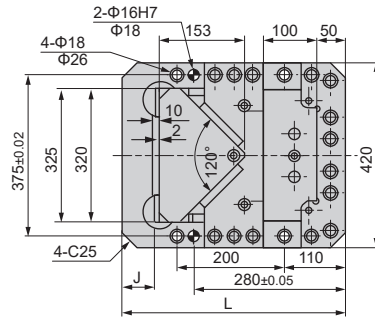


KRCVS320-60

normale Konstruktion / Regular Type

KRCVH320-60

sehr steife Konstruktion / Highly Rigid Type


Tabelle Schieber
Table of Cam Structure

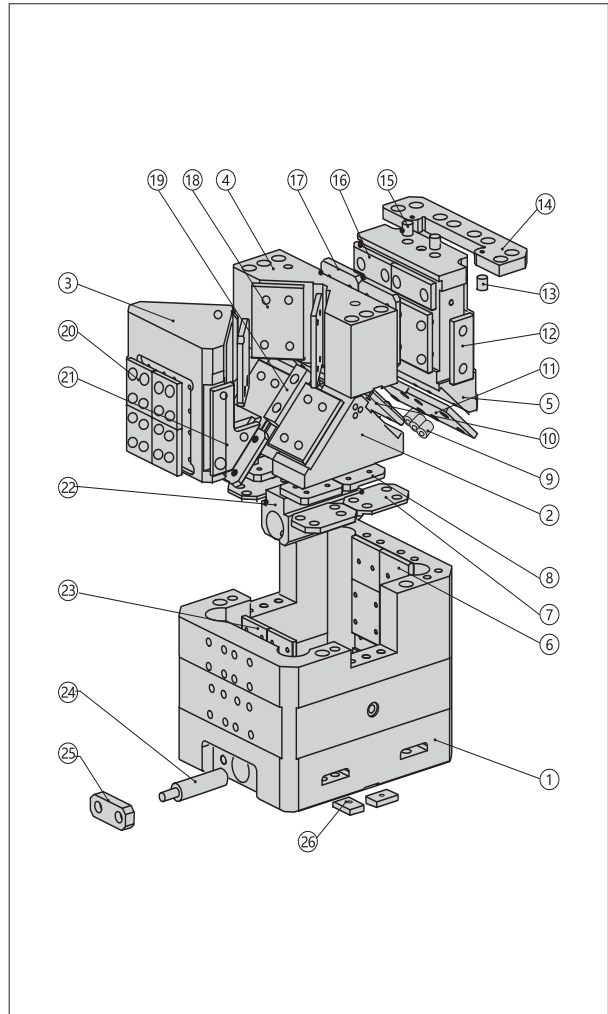
Bestellnr. / Catalog No.	W	J	K	L	Arbeitsweg / Working Stroke	Gewicht (kg) / Weight (kg)
KRCVS320-60	320	35	45	390	60	362.0
KRCVH320-60	320	55	65	410		



Übersicht Schieberkraft / Rückzugskraft Table of Cam Force


Typ / Type	Federkraft (N/kgf) / Spring Force (N / kgf)		Arbeitskraft (kN / tonF) / (KN / tonf) Work Force
	Anfangskraft / Initial Load	Endkraft / Final Load	
GK	6872 / 700.7	9382 / 956.7	156.8 / 16.0

Nr. / No.	Beschreibung / Description	Anzahl / Qty	Material und Anmerkung / Material and Remark
①	Aufnahme / Cam Holder	1	QT450
②	Schieber A / Cam Slider A	1	42CrMo+Festschmierstoff / graphite plugs
③	Schieber B / Cam Slider B	1	42CrMo+Festschmierstoff / graphite plugs
④	Stoppblock / Stopping Block	1	45
⑤	Schieber / Cam Slider	1	45
⑥	Gleitplatte / Guide Block	2	Bronze+Festschmierstoff / graphite plugs
⑦	Gleitplatte / Guide Block	4	Bronze+Festschmierstoff / graphite plugs
⑧	Gleitplatte / Guide Block	2	42CrMo
⑨	Gleitplatte / Guide Block	6	UrethanUrethane
⑩	Gleitplatte / Guide Block	2	Bronze+Festschmierstoff / graphite plugs
⑪	Gleitplatte / Guide Block	2	Bronze+Festschmierstoff / graphite plugs
⑫	Gleitplatte / Guide Block	2	42CrMo
⑬	Urethan-Dämpfer / Urethane Stopper	2	UrethanUrethane
⑭	Federplatte / Spring Stop	1	45
⑮	Urethan-Dämpfer / Urethane Stopper	2	Urethan / Urethane
⑯	Gleitplatte / Guide Block	2	Bronze+Festschmierstoff / graphite plugs
⑰	Gleitplatte / Guide Block	2	42CrMo
⑱	Gleitplatte / Guide Block	2	42CrMo
⑲	Zwangsrückführung / Positive Return Follower	1	42CrMo
⑳	Gleitplatte / Guide Block	4	42CrMo
㉑	Gleitplatte / Guide Block	2	Bronze+Festschmierstoff / graphite plugs
㉒	Federführungsbolzen / Spring guide block	1	45
㉓	Gleitplatte / Guide Block	4	Bronze+Festschmierstoff / graphite plugs
㉔	Gasdruckfeder / Gas Spring	2	K750-100-7.0
㉕	Federplatte / Spring Stop	1	45
㉖	Passfeder / Key	4	45



Options-Code / Option Code	Beschreibung / Envelope	Modell / Model
GK	Gasdruckfeder KALLER / Fibro / Gas Spring by KALLER	K750-100-7.0

Bestellnummer / Order Number

	Bestellnr. / Catalog No.	-	(W)	-	WT	-	Typ / Type
	KACL	-	320	-	60	-	GK
	KACL	-	320	-	60	-	GK

