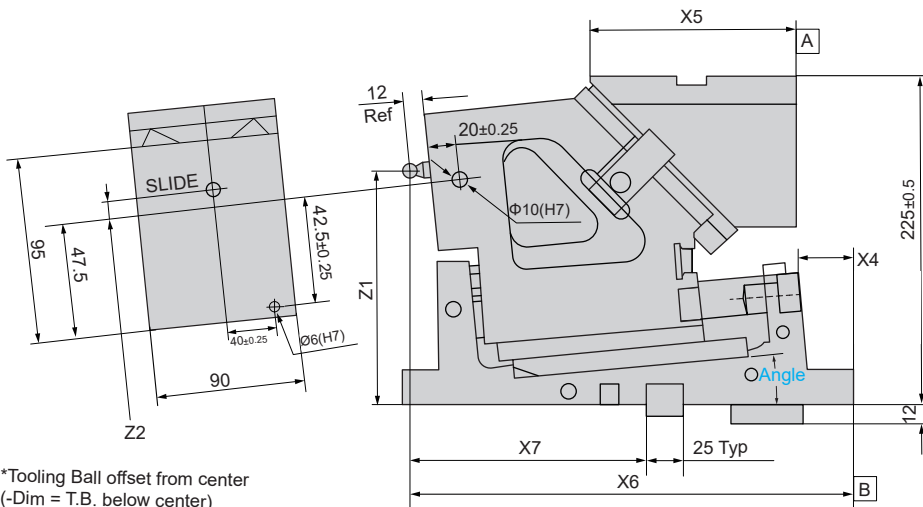
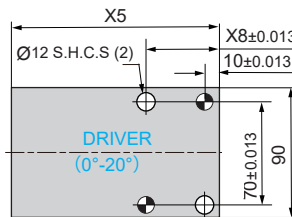
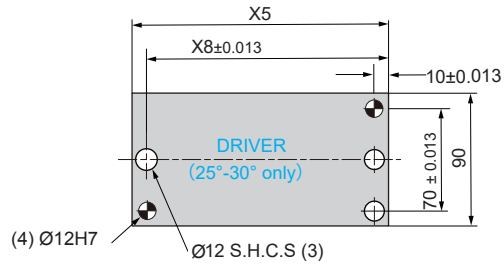
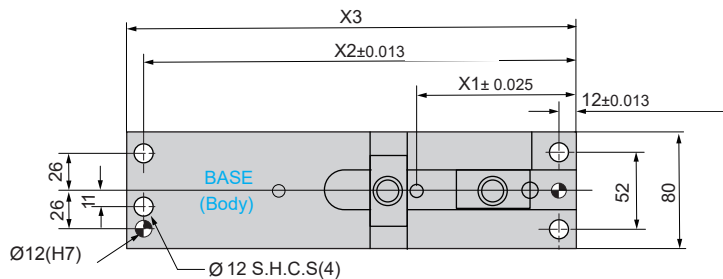


**NCD05**

**DIEMOUNT 50 SERIES**



\*Tooling Ball offset from center  
(-Dim = T.B. below center)  
Note: T.B. (NAAMS M011222)  
is for reference only; part and  
mounting provisions not included.

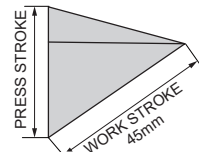


## DIEMOUNT 50 SERIES

### ABMESSUNGEN & GEWICHT / DIMENSIONS AND WEIGHTS

Bestell-Nr. / Order No.	Gewicht / WEIGHT		Winkel / ANGLE	X1	X2	X3	X4	X5	X6	X7	X8	Z1	Z2
	KG	LBS.				Ref.		Ref.					Ref.
NCD050006_	36	79	0°	100.50	288	300	21.9	130.9	283.0	170.0	50.0	160.0	-6.6
NCD050506_	37	81	5°	109.90	298	310	39.4	141.9	302.4	180.0	50.0	150.0	-1.8
NCD051006_	37	81	10°	104.64	297	310	36.8	153.5	307.1	190.0	65.0	140.0	-3.9
NCD051506_	38	83	15°	110.53	307	320	54.3	160.0	323.0	200.0	85.0	135.0	2.3
NCD052006_	37	81	20°	96.74	297	310	55.0	160.0	319.2	210.0	81.0	130.0	4.6
NCD052506_	37	81	25°	100.91	297	310	63.3	200.0	323.4	210.0	190.0	115.0	2.2
NCD053006_	36	79	30°	104.89	288	300	63.7	200.0	317.4	200.0	190.0	105.0	-2.0

Bestellzusatz für die Feder /  
Specify spring type



Schieber-Schema /  
CAM DIAGRAM

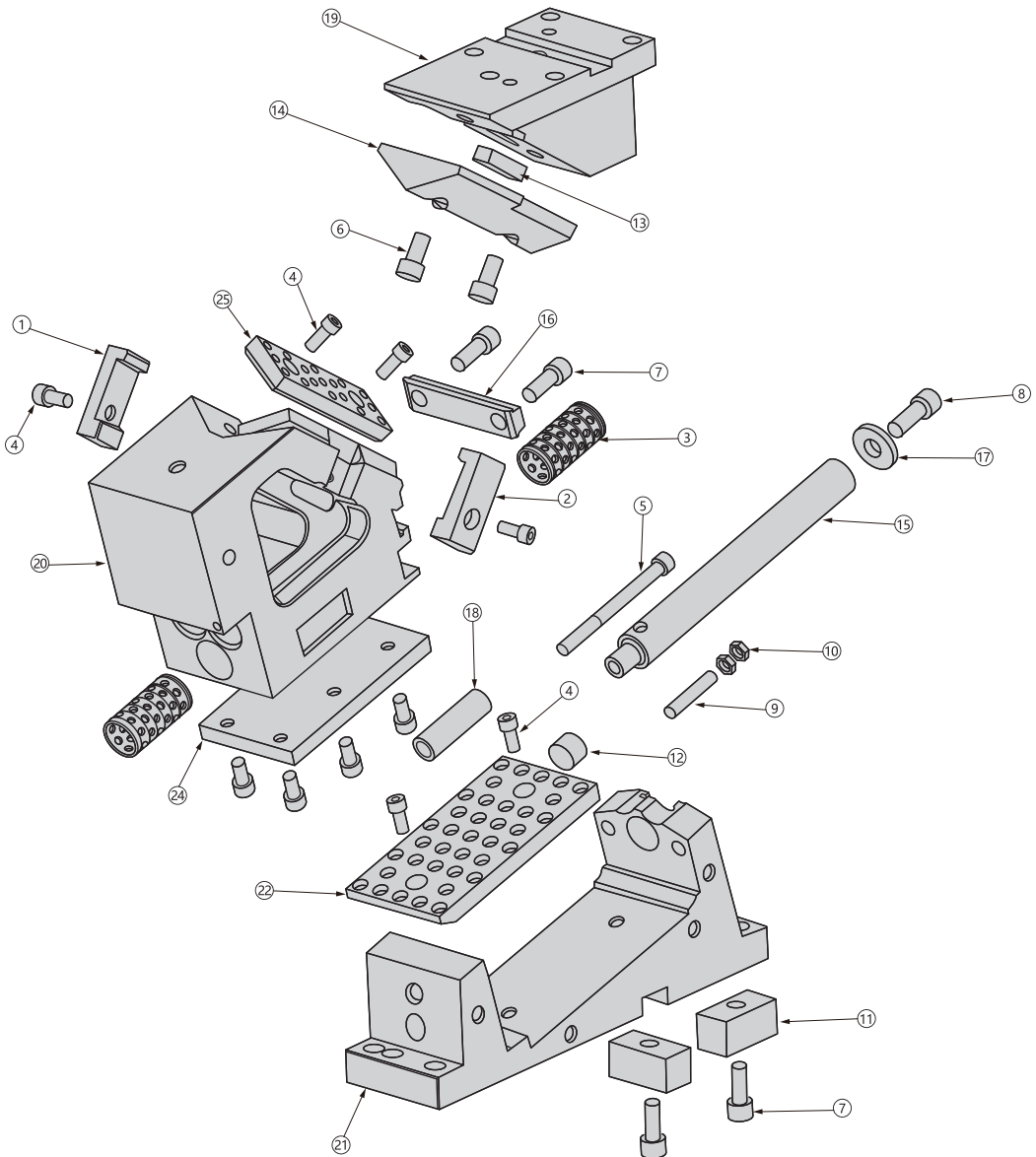
Winkel / ANGLE	Hub / PRESS STROKE	Arbeitsweg / WORK STROKE
0	53.6	45
5	48.8	45
10	45.0	45
15	42.1	45
20	39.8	45
25	38.0	45
30	36.7	45



**NCD05**

**DIEMOUNT 50 SERIES**

Explosionsdarstellung / COMPONENT PARTS



Refer to 50 Series Specification Table for Return Spring Options. See page 3 for more information.



## DIEMOUNT 50 SERIES

Ersatzteile / REPLACEMENT PARTS			
Nummer / NUMBER	Beschreibung / DESCRIPTION	Nummer / NUMBER	Beschreibung / DESCRIPTION
1	Zwangsrückführung / RH Positive Return	13	Passfeder Key 10 x 12,7 x 40 mm
2	Zwangsrückführung / LH Positive Return	14	V-Block / V-Block
3	Selbstschmierende Buchse aus Bronze / Bronze Self Lube Bushing	15	Führungssäule / Guide Pin
4	M8 x 1.25 x 16 SHCS	16	Federstütze / Spring Bracket
5	M8 x 1.25 x 100 SHCS	17	Scheibe / Disk Plate
6	M10 x 1.5 x 20 SHCS	18	Befestigungshülse x 59 mm Länge / Lockout Spacer x 59 mm LG
7	M10 x 1.5 x 25 SHCS	19	Treiber / Driver
8	M12 x 1.75 x 25 SHCS	20	Schieber / Slide
9	M8 x 45 mm LG Soc Gewindestift / LG Soc Set Screw	21	Aufnahme / Body
10	M8 x 1,25 Sechskantmutter Jam Nut	22	12 x 80 x 160 mm BRZ S/L WP
11	25 x 25 x 50 mm Passfeder / Key	23	12 x 40 x 122.5 mm BRZ S/L WP
12	Dämpfer / Bumper	24	12 x 80 x 145 mm HD Steel WP HD Steel WP

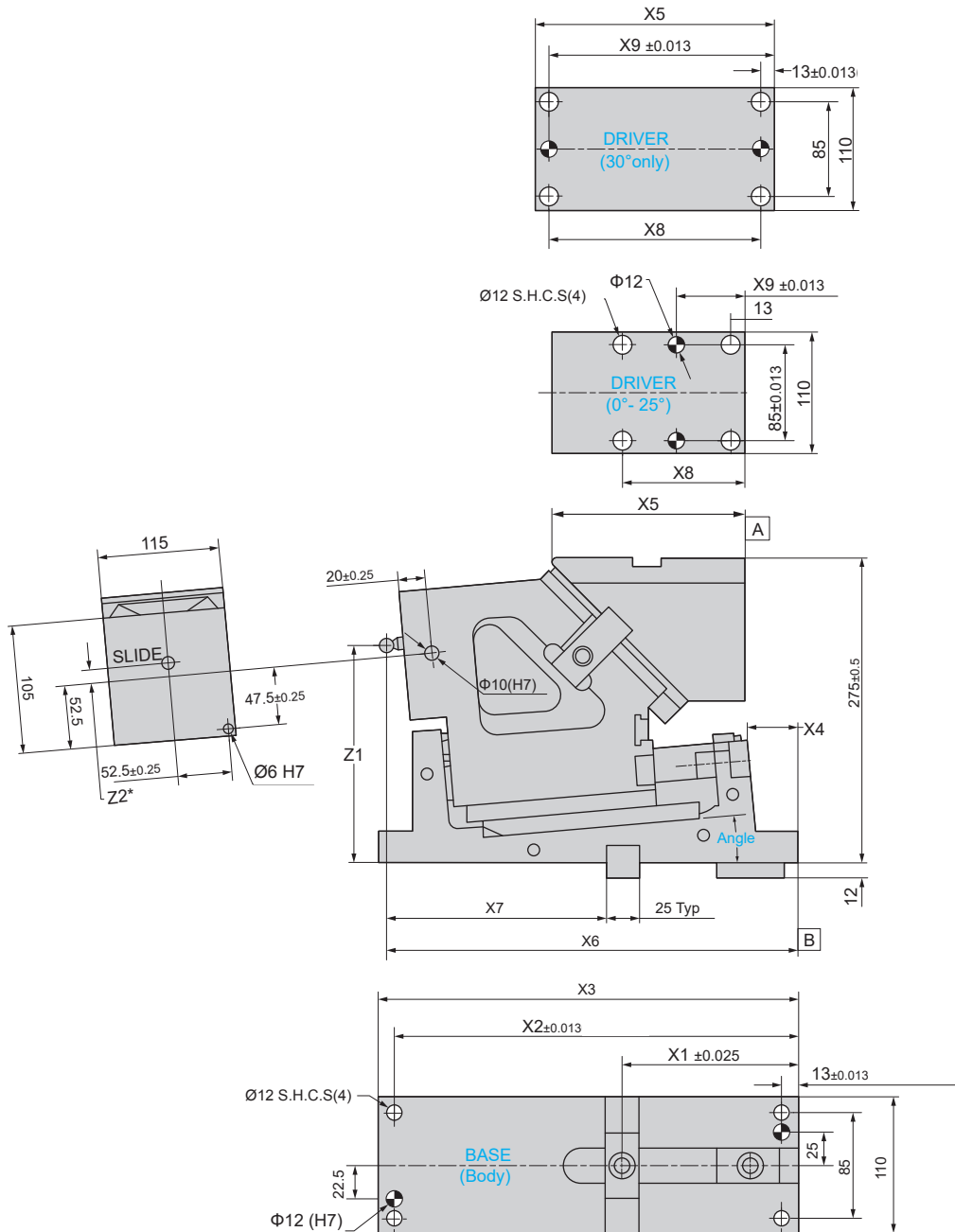
Eigenschaften / SPECIFICATIONS		
Werkzeugaufnahme / Tooling Allowance		
Größe & Gewicht / Size & Weight Parameters	Abstand / Protrusion	Gewicht / Weight
	125 mm	7 kg
Nennleistung in kN / Rated Capacity - kN		
Hübe / Cycles	300,000	1,000,000
Arbeitskraft / Load Rating	174 kN	152 kN

Federauswahl / SPRING KIT OPTIONS					
Hersteller / VENDOR	Suffix	Bestell-Nr. / Order No.	Anzahl / QTY	Anfangskraft (N) / INITIAL LOAD (N)	Endkraft (N) / FINAL LOAD (N)
Schraubendruckfeder / Coil Spring	C	SKC050001	2	167	635
Dadco	D	SKC050014	2	4000	4933
Dadco Ultra	U	CLNA0050-0050	2	6400	8773
Dadco Coil / Nitrogen	CD	SKC050012	2	219	751
Kaller	K	SKC050005	2	4000	5272
Kaller Powerline	P	CLNA0050-0036	2	6400	8926
Kaller Coil / Nitrogen	CK	SKC050002	2	219	751



**NCD07**

**DIEMOUNT 75 SERIES**

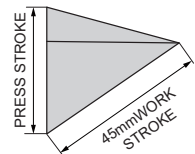


## DIEMOUNT 75 SERIES

### ABMESSUNGEN & GEWICHT / DIMENSIONS AND WEIGHTS

Bestell-Nr. / Order No.	Gewicht / WEIGHT		Winkel / ANGLE	X1	X2	X3	X4	X5	X6	X7	X8	X9	Z1	Z2
	KG	LBS.				Ref.		Ref.						Ref.
NCD070006_	49	108	0°	149.50	352.0	365.0	47.6	150	332.0	170.0	70.0	41.5	200.0	4
NCD070506_	51	112	5°	149.60	352.0	365.0	30.4	180	342.1	180.0	75.0	44.0	190.0	1
NCD071006_	51	112	10°	151.96	344.5	357.5	42.1	190	354.5	190.0	80.0	46.5	175.0	-8
NCD071506_	52	114	15°	147.50	332.0	345.0	45.6	200	360.0	200.0	105.0	80.0	165.0	-11
NCD072006_	51	112	20°	144.47	347.0	360.0	60.4	200	367.0	210.0	110.0	85.0	155.0	-13
NCD072506_	52	114	25°	137.48	333.0	346.0	68.0	200	365.0	215.0	115.0	94.0	145.0	-15
NCD073006_	51	112	30°	138.96	334.5	347.5	77.0	245	371.5	220.0	232.0	229.0	135.0	-7

↑  
 Bestellzusatz für die Feder /  
 Specify spring type



Schieber-Schema /  
 CAM DIAGRAM

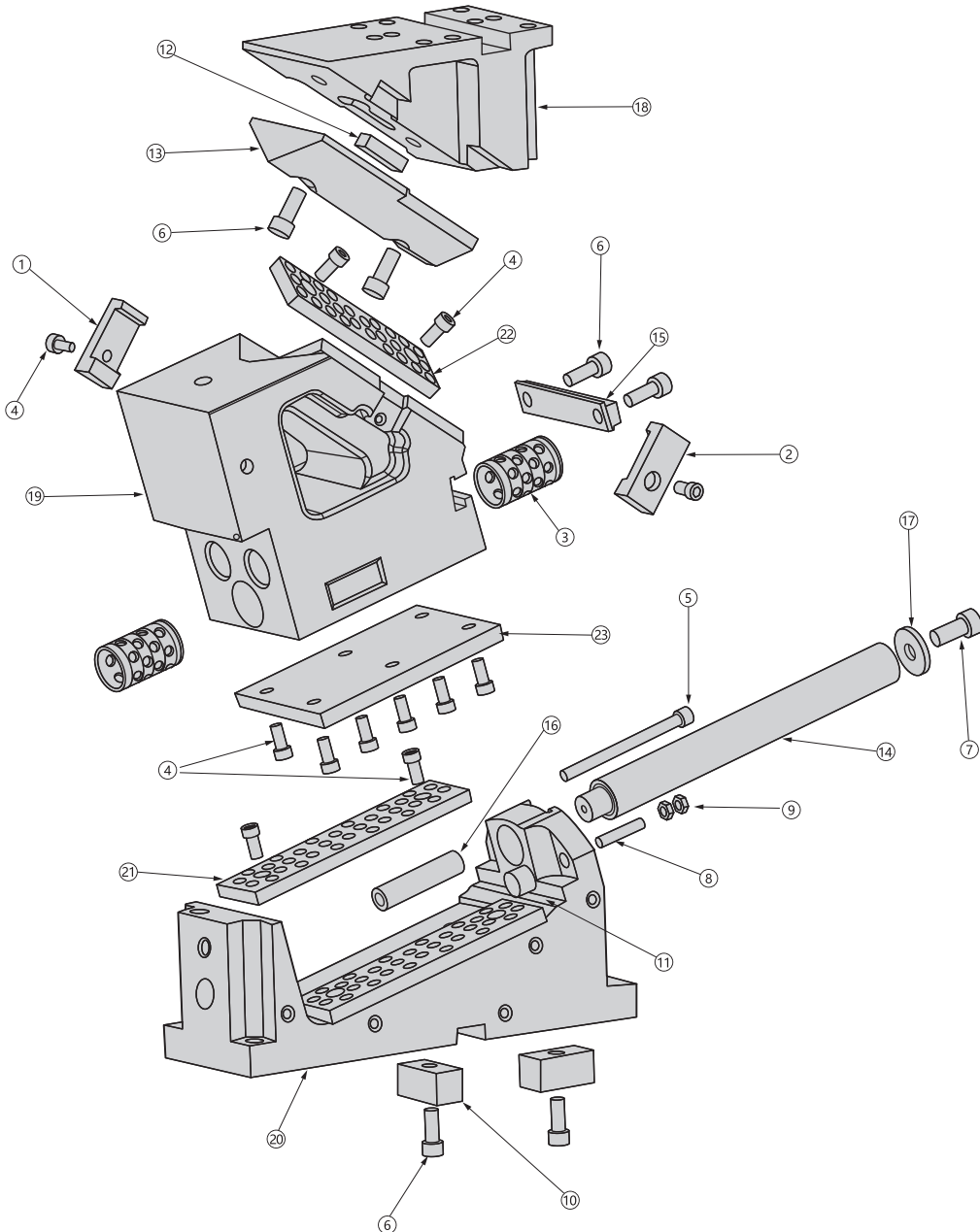
Winkel / ANGLE	Hub / PRESS STROKE	Arbeitsweg / WORK STROKE
0	71.5	60
5	65.0	60
10	60.0	60
15	56.1	60
20	53.1	60
25	50.7	60
30	48.9	60



**NCD07**

**DIEMOUNT 75 SERIES**

Explosionsdarstellung / COMPONENT PARTS



## DIEMOUNT 75 SERIES

Ersatzteile / REPLACEMENT PARTS			
Nummer / NUMBER	Beschreibung / DESCRIPTION	Nummer / NUMBER	Beschreibung / DESCRIPTION
1	Zwangsrückführung / RH Positive Return	13	Treiber / V-Driver
2	Zwangsrückführung / LH Positive Return	14	Führungssäule / Guide Pin
3	Buchse / Bronze Bushing	15	Federstütze / Spring Bracket
4	M8 x 1.25 x 16 SHCS	16	Distanzhülse / Lockout Spacer
5	M8 x 1.25 x 110 SHCS	17	Scheibe / Disk Plate
6	M10 x 1.5 x 25 SHCS	18	Treiber / Driver
7	M12 x 1.75 x 25 SHCS	19	Schieber / Slide
8	M8 x 40 mm LG Soc Gewindestift / LG Soc Set Screw	20	Aufnahme / Body
9	M8 x 1.25 Jam Nut	21	12 x 50 x 200 mm BRZ S/L WP
10	25 x 25 x 50 mm Passfeder / Key	22	12 x 50 x 150 mm BRZ S/L WP
11	Dämpfer / Bumper	23	12 x 170 x 110 mm HD Steel WP HD Steel WP
12	Passfeder Key 10 x 12,7 x 40 mm		

Eigenschaften / CAM SPECIFICATIONS - 75 Series Cam		
Werkzeugaufnahme / Tooling Allowance		
Größe & Gewicht / Size & Weight	Abstand / Protrusion	Gewicht / Weight
	140 mm	10 kg
Nennleistung in kN / Rated Capacity -kN		
Hübe / Cycles	300,000	1,000,000
Arbeitskraft / Working force	214 kN	187 kN

Federnauswahl / SPRING KIT OPTIONS					
Hersteller / VENDOR	Suffix	Bestell-Nr. / Order No.	Anzahl / QTY	Anfangskraft (N) / INITIAL LOAD (N)	Endkraft (N) / FINAL LOAD(N)
Schraubendruckfeder / Coil Spring	C	SKC070001	2	372	2620
Dad co	D	SKC070014	2	4000	4933
Dadco Ultra	U	CLNA0075-0023	2	6400	9106
Dadco Coil / Nitrogen	CD	SKC070012	2	412	2824
Kaller	K	SKC070015	2	4000	5381
Kaller Powerline	P	CLNA0075-0014	2	6400	9106
Kaller Coil / Nitrogen	CK	SKC070002	2	412	2824

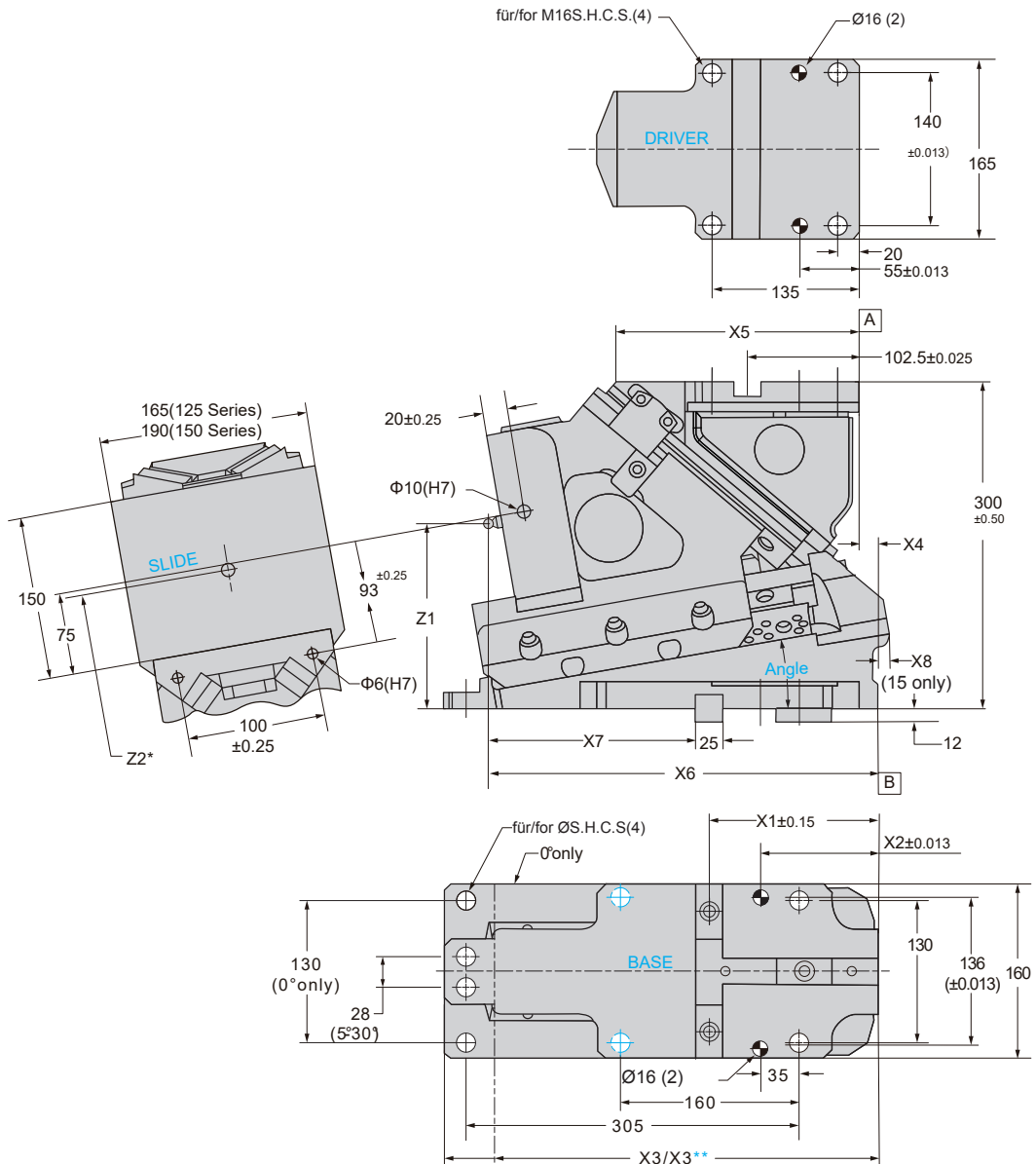




**NCD12**

**NCD15**

**DIEMOUNT 125-150 SERIES**

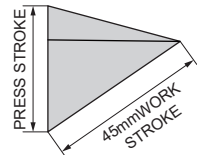


## DIEMOUNT 125-150 SERIES

### ABMESSUNGEN & GEWICHT / DIMENSIONS AND WEIGHTS

Bestell-Nr. / Order No.	Gewicht / WEIGHT		Winkel / ANGLE	X1	X2	X3	X3*	X4	X5	X6	X7	X8	Z1	Z2
	KG	LBS.												
NCD120006_	83	183	0°	154.50	108	398	360	-22.0	223	337.0	170	-	200.0	3.0
NCD120506_	84	185	5°	157.46	108	398	365	-5.6	228	350.0	180	-	190.0	2.6
NCD121006_	86	189	10°	154.83	108	398	365	17.7	223	357.3	190	-	175.0	0.4
NCD121506_	85	187	15°	143.08	100	390	357	28.2	229	355.6	200	8	165.0	0
NCD122006_	86	189	20°	150.89	103	393	360	32.3	254	373.4	210	-	155.0	-1.6
NCD122506_	80	176	25°	115.07	65	355	320	35.3	226	337.6	210	34	145.0	-0.2
NCD123006_	83	183	30°	127.15	65	355	320	63.5	222	349.7	210	25	135.0	-2.9
NCD150006_	86	189	0°	154.50	108	398	360	-22.0	223	337.0	170	-	200.0	3.0
NCD150506_	87	191	5°	157.46	108	398	365	-5.6	228	350.0	180	-	190.0	2.6
NCD151006_	89	196	10°	154.83	108	398	365	17.7	223	357.3	190	-	175.0	0.4
NCD151506_	88	194	15°	143.08	100	390	357	28.2	229	355.6	200	8	165.0	0
NCD152006_	89	196	20°	150.89	103	393	360	32.3	254	373.4	210	-	155.0	-1.6
NCD152506_	83	183	25°	115.07	65	355	320	35.3	226	337.6	210	34	145.0	-0.2
NCD153006_	86	189	30°	127.15	65	355	320	63.5	222	349.7	210	25	135.0	-2.9

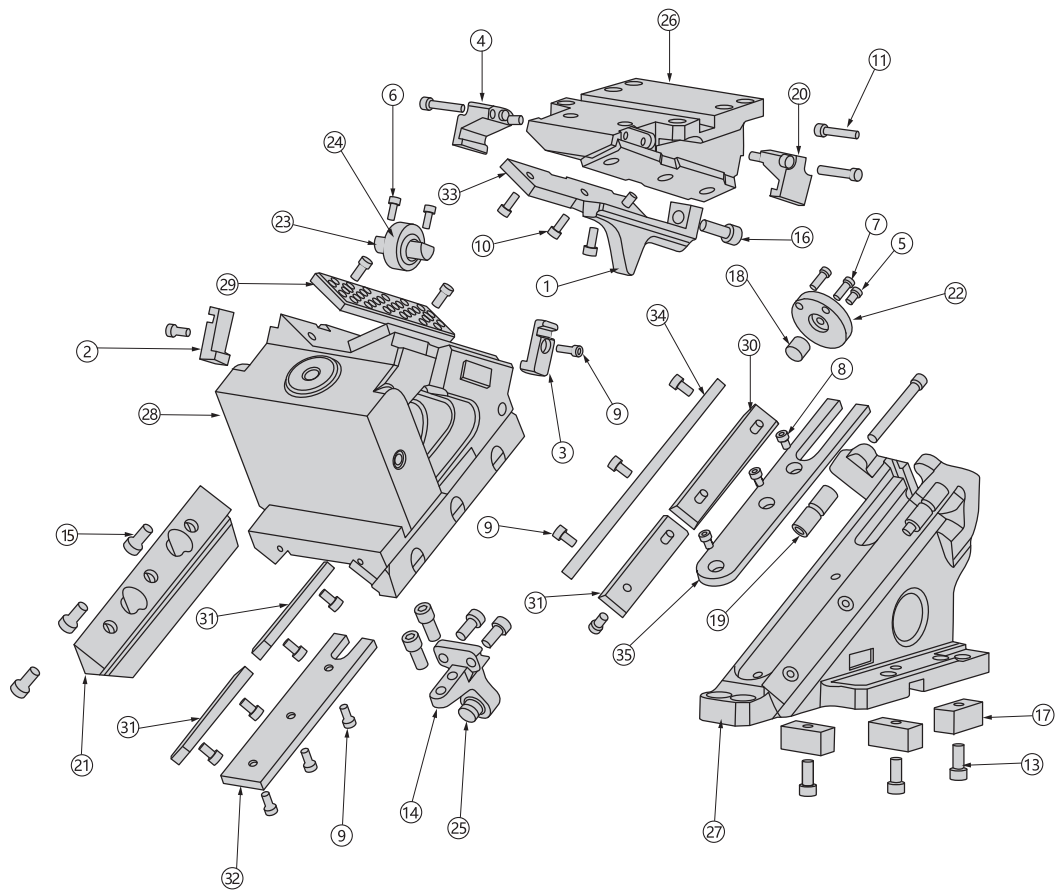
Bestellzusatz für die Feder /  
Specify spring type



Schieber-Schema /  
CAM DIAGRAM

Winkel / ANGLE	Hub / PRESS STROKE	Arbeitsweg / WORK STROKE
0	71.5	60
5	65.0	60
10	60.0	60
15	56.1	60
20	53.1	60
25	50.7	60
30	48.9	60



**NCD12**
**NCD15**
**DIEMOUNT 125-150 SERIES**
**Explosionsdarstellung / COMPONENT PARTS**

**Optional Stoßfänger / SHOCK ABSORBERS-OPTIONAL**

Anzahl / Qty	Bestell-Nr. / Order No	Beschreibung / DESCRIPTION
2	MSC100028	Stoßfängerbauteile / Shock Absorber Assemblies



## DIEMOUNT 125 - 150 SERIES

Ersatzteile / 125 - 150 SERIES DEMOUNT CAMS REPLACEMENT PARTS			
Nummer / NUMBER	Beschreibung / DESCRIPTION	Nummer / NUMBER	Beschreibung / DESCRIPTION
1	Beschleuniger-Rampe (nur 25° & 30°) / Accelerator Ramp 25° & 30° only	19	Distanzhülse / Lockout Spacer
2	Zwangsrückführung / RH Positive Return	20	Zwangsrückführung / LH Positive Return Bracket
3	Zwangsrückführung / LH Positive Return	21	Halteplatte / Keeper Plate
4	Zwangsrückführung / RH Positive Return Bracket	22	Scheibe / Disk Plate
5	M6 x 1.0 x 12 SHCS	23	Welle (nur 25° & 30°) / Roller Shaft 25° & 30° only
6	M6 x 1.0 x 16 SHCS	24	Rolle (nur 25° & 30°) / Roller 25° & 30° only
7	M6 x 1.0 x 20 SHCS	25	Federstütze / Spring Return Bracket
8	M8 x 1.25 x 10 SHCS	26	Treiber / Driver
9	M8 x 1.25 x 16 SHCS	27	Aufnahme / Body
10	M8 x 1.25 x 20 SHCS	28	Schieber / Slide
11	M8 x 1.25 x 40 SHCS	29	12 x 50 x 200 mm BRZ S/L WP
12	M8 x 1.25 x 90 SHCS	30	12 x 30 x 160 mm BRZ S/L WP
13	M10 x 1.5 x 25 SHCS	31	12 x 30 x 125 mm BRZ S/L WP
14	M12 x 1.75 x 25 SHCS	32	12 x 50 x 225 mm BRZ S/L WP
15	M12 x 1.75 x 30 SHCS	33	12 x 48 x 225 mm Steel WP
16	M12 x 1.75 x 45 SHCS	34	12 x 30 x 285 mm Steel WP
17	25 x 25 x 50 mm Passfeder / Key	35	12 x 48 x 280 mm Steel WP
18	Dämpfer / Bumper		

Eigenschaften / SPECIFICATIONS		
Werkzeugaufnahme / Tooling Allowance		
Größe & Gewicht / Size & Weight	Abstand / Protrusion	Gewicht / Weight
	150 mm	20 kg
Nennleistung in kN / Rated Capacity -kN		
Hübe / Cycles	300,000	1,000,000
Arbeitskraft / Working force	352 kN	308 kN

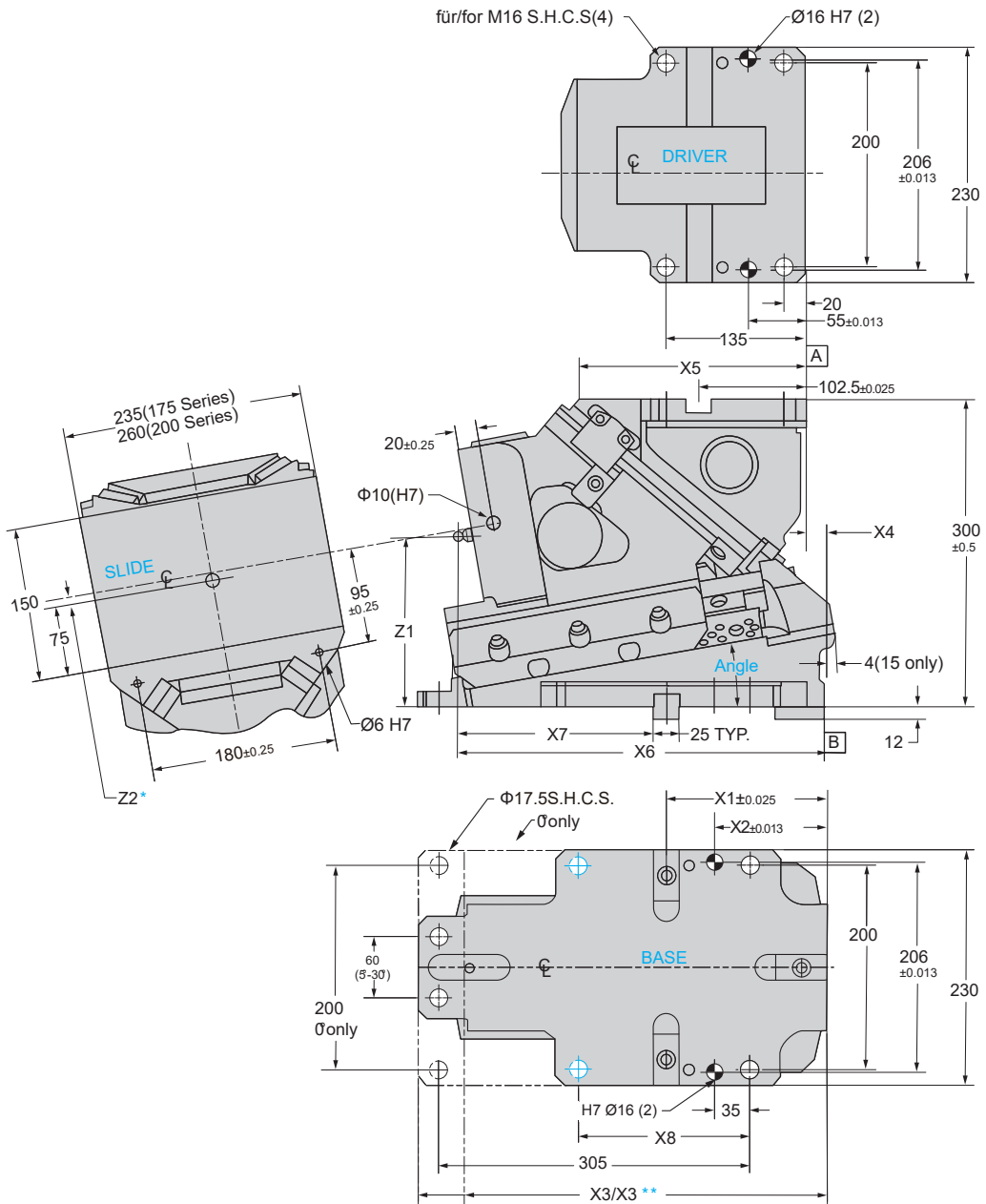
Federauswahl / SPRING KIT OPTIONS					
Hersteller / VENDOR	Suffix	Bestell-Nr. / Order No.	Anzahl / QTY	Anfangskraft / INITIAL LOAD (N)	Endkraft / FINAL LOAD (N)
Schraubendruckfeder / Coil Spring	C	SPG243811CAM	1	265	1559
Dad co	D	90.3.0300.080	1	3020	4010
Dadco Ultra	U	CLNA0125-0025	1	4619	5932
Dadco Coil / Nitrogen	CD	SKC120012	1	432	3540
Kaller	K	TU250-080Y	1	2650	3240
Kaller Powerline	P	CLNA0125-0016	1	4700	6355
Kaller Coil / Nitrogen	CK	SKC120002	1	432	3403



**NCD17**

**NCD20**

**DIEMOUNT 175 - 200 SERIES**

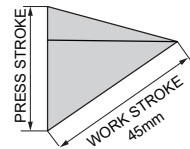


## DIEMOUNT 175-200 SERIES

### ABMESSUNGEN & GEWICHT / DIMENSIONS AND WEIGHTS

Bestell-Nr. / Order No.	Gewicht / WEIGHT		Winkel / ANGLE	X1	X2	X3	X3*	X	X5	X6	X7	X8	Z1	Z2
	KG	LBS.				Ref.			Ref.			Ref.		Ref.
NCD170006_	126	277	0°	154.50	108	398	358	-20.0	223	337.0	170.0	222	200	3
NCD170506_	117	257	5°	154.46	115	405	365	-6.4	228	347.0	180.0	170	190	2.7
NCD171006_	115	253	10°	156.83	110	400	365	22.1	223	359.3	190.0	160	175	0.4
NCD171506_	110	242	15°	148.08	100	390	350	32.4	229	360.6	200.0	170	165	0
NCD172006_	111	244	20°	150.89	103	393	360	35.4	254	373.4	210.0	170	155	-1.6
NCD172506_	110	242	25°	115.07	65	355	320	34.2	226	337.6	210.0	170	150	-0.20
NCD173006_	113	249	30°	127.15	65	355	320	63.7	222	349.7	210.0	170	140	-2.90
NCD200006_	128	282	0°	154.50	108	398	358	-20.0	223	337.0	170.0	222	200	3
NCD200506_	119	262	5°	154.46	115	405	365	-6.4	228	347.0	180.0	170	190	2.7
NCD201006_	117	257	10°	156.83	110	400	365	22.1	223	359.3	190.0	160	175	0.4
NCD201506_	112	246	15°	148.08	100	390	350	32.4	229	360.6	200.0	170	165	0
NCD202006_	113	249	20°	150.89	103	393	360	35.4	254	373.4	210.0	170	155	-1.6
NCD202506_	112	246	25°	115.07	65	355	320	34.2	226	337.6	210.0	170	150	-0.20
NCD203006_	115	253	30°	127.15	65	355	320	63.7	222	349.7	210.0	170	140	-2.90

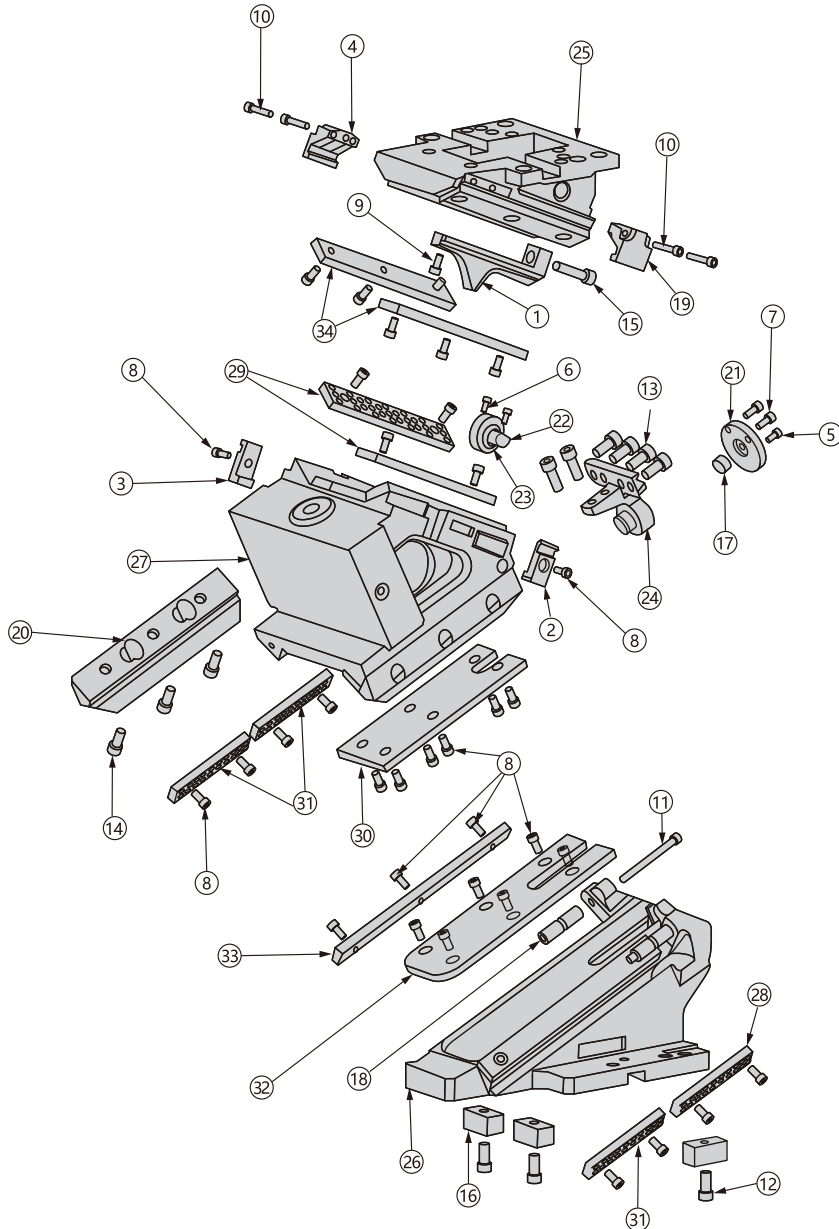
Bestellzusatz für die Feder /  
Specify spring type



Schieber-Schema /  
CAM DIAGRAM

Winkel / ANGLE	Hub / PRESS STROKE	Arbeitsweg / WORK STROKE
0	71.5	60
5	65.0	60
10	60.0	60
15	56.1	60
20	53.1	60
25	50.7	60
30	48.9	60



**NCD17**
**NCD20**
**DIEMOUNT 175 - 200 SERIES**
**Explosionsdarstellung / COMPONENT PARTS**


Optional Stoßfänger SHOCK ABSORBERS-OPTIONAL		
Anzahl / Qty	Bestell-Nr. / Order No	Beschreibung / DESCRIPTION
2	MSC100028	Stoßfängerbauteile / Shock Absorber Assemblies



## DIEMOUNT 175 - 200 SERIES

Ersatzteile / REPLACEMENT PARTS			
Nummer / NUMBER	Beschreibung / DESCRIPTION	Nummer / NUMBER	Beschreibung / DESCRIPTION
1	Beschleuniger-Rampe (nur 25° & 30°) / Accelerator Ramp 25° & 30° only	18	Distanzhülse / Lockout Spacer
2	Zwangsrückführung / RH Positive Return	19	Zwangsrückführung / LH Positive Return Bracket
3	Zwangsrückführung / LH Positive Return	20	Halteplatte / Keeper Plate
4	Zwangsrückführung / RH Positive Return Bracket	21	Scheibe / Disk Plate
5	M 6 x 1.0 x 12 SHCS	22	Welle (nur 25° & 30°) / Roller Shaft 25° & 30° only
6	M6 x 1.0 x 16 SHCS	23	Rolle (nur 25° & 30°) / Roller 25° & 30° only
7	M6 x 1.0 x 20 SHCS	24	Federstütze / Spring Return Bracket
8	M8 x 1.25 x 16 SHCS	25	Treiber / Driver
9	M8 x 1.25 x 20 SHCS	26	Aufnahme / Body
10	M8x 1.25 x 40 SHCS	27	Schieber / Slide
11	M8 x 1.25 x 90 SHCS	28	12 x 30 x 160 mm BRZ S/L WP
12	M10 x 1.5 x 25 SHCS	29	12 x 38 x 200 mm BRZ S/L WP
13	M12x 1.75 x 25 SHCS	30	12 x 100 x 240 mm BRZ S/L WP
14	M12 x 1.75 x 30 SHCS	31	12 x 30 x 125 mm BRZ S/L WP
15	M12 x 1.75 x 45 SHCS	32	12 x 100 x 290 mm Steel WP
16	25 x 25 x 50 mm Passfeder / Key	33	12 x 30 x 285 mm Steel WP
17	Dämpfer / Bumper	34	12 x 38 x 225 mm HRD Steel WP

Eigenschaften / SPECIFICATIONS		
Werkzeugaufnahme / Tooling Allowance		
Größe & Gewicht / Size & Weight	Abstand / Protrusion	Gewicht / Weight
	175 mm	32kg
Nennleistung in kN / Rated Capacity -kN		
Hübe / Cycles	300,000	1,000,000
Arbeitskraft / Working force	484 kN	424 kN

Federauswahl / SPRING KIT OPTIONS					
Hersteller / VENDOR	Suffix	Bestell-Nr. / Order No.	Anzahl / QTY	Anfangskraft (N) / INITIAL LOAD (N)	Endkraft (N) / FINAL LOAD (N)
Schraubendruckfeder / Coil Spring	C	SPG323911CAM	1	402	2442
Dadco	D	SKC170013	1	4710	5810
Dadco Ultra	U	CLNA0175-0030	1	7360	10140
Dadco Coil / Nitrogen	CD	SKC170012	1	503	6903
Kaller	K	SKC170003	1	4700	6056
Kaller Powerline	P	CLNA0175-0020	1	7400	10386
Kaller Coil / Nitrogen	CK	SKC170002	1	503	4540

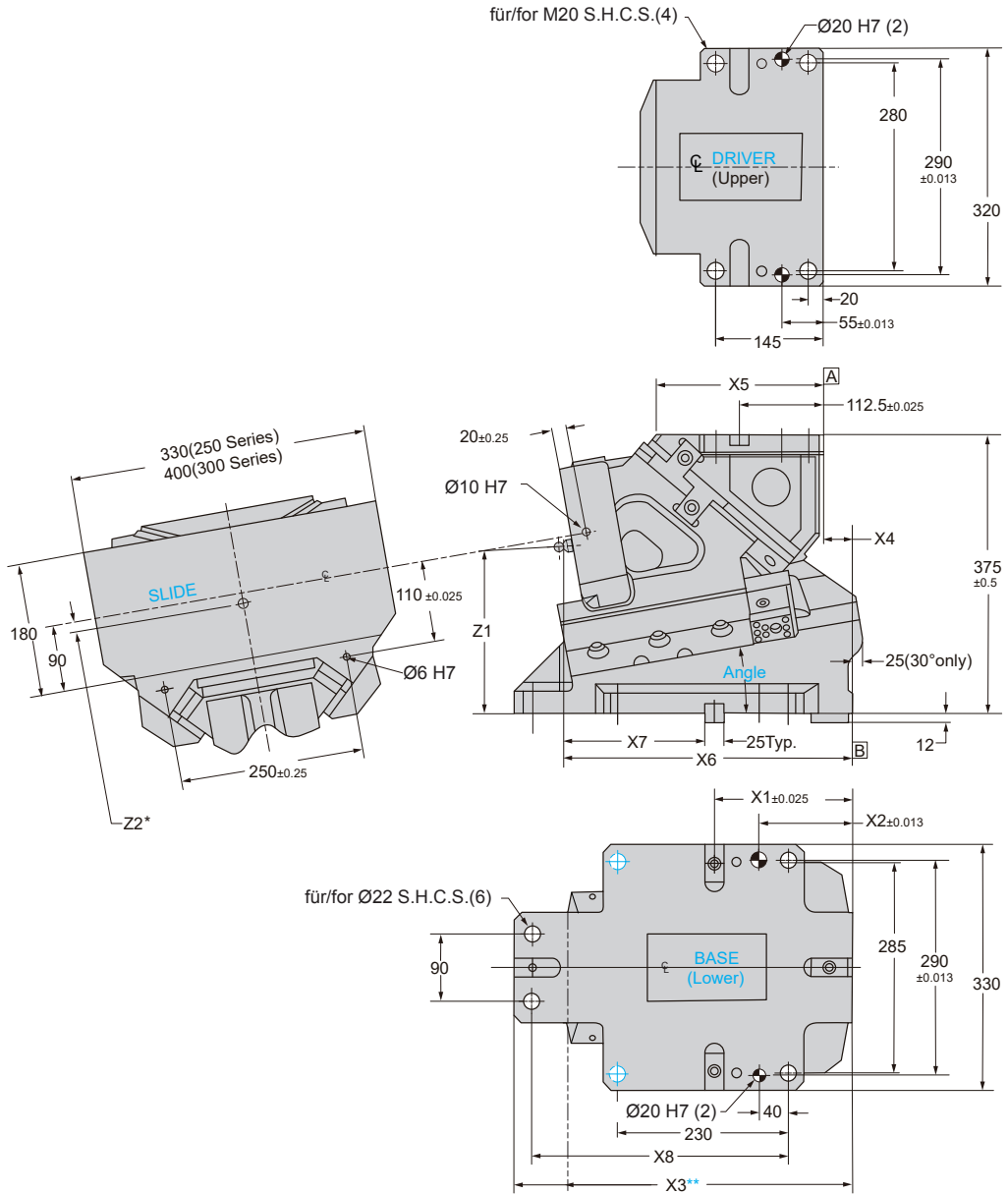




**NCD25**

**NCD30**

**DIEMOUNT 250-300 SERIES**

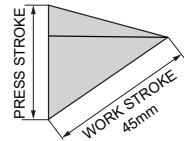


## DIEMOUNT 250 - 300 SERIES

### ABMESSUNGEN & GEWICHT / DIMENSIONS AND WEIGHTS

Bestell-Nr. / Order No.	Gewicht / WEIGHT		Winkel / ANGLE	X1	X2	X3		X3*	X4	X5		X6	X7	X8		X9	Z1	Z2	
	KG	LBS.				Ref.	Ref.			Ref.	Ref.			Ref.	Ref.			Ref.	
NCD250006_	214	472	0°	181.50	135	455	380	-3.7	220.0	364.0	170	335	260	5	15				
NCD250506_	197	433	5°	183.98	126	460	390	3.9	225.0	376.5	180	349	235	-1	9				
NCD251006_	195	429	10°	184.93	125	455	385	38.7	225.0	387.4	190	345	225	-14	-4				
NCD251506_	193	425	15°	191.21	125	479	395	61.9	225.0	403.7	200	370	210	-7	3				
NCD252006_	194	427	20°	190.45	120	474	395	73.2	242.5	412.9	210	370	195	-18	-8				
NCD252506_	193	425	25°	197.45	120	474	400	97.3	250.0	429.9	220	370	190	-15	N/A				
NCD253006_	194	427	30°	154.87	60	414	349	68.7	248.0	387.3	220	370	185	-13	N/A				
NCD300006_	222	488	0°	181.50	135	455	380	-3.7	220.0	364.0	170	335	260	5	15				
NCD300506_	205	451	5°	183.98	126	460	390	3.9	225.0	376.5	180	349	235	-1	9				
NCD301006_	203	447	10°	184.93	125	455	385	38.7	225.0	387.4	190	345	225	-14	-4				
NCD301506_	201	442	15°	191.21	125	479	395	61.9	225.0	403.7	200	370	210	-7	3				
NCD302006_	202	444	20°	190.45	120	474	395	73.2	242.5	412.9	210	370	195	-18	-8				
NCD302506_	201	442	25°	197.45	120	474	400	97.3	250.0	429.9	220	370	190	-15	N/A				
NCD303006_	202	444	30°	154.87	60	414	349	68.7	248.0	387.3	220	370	185	-13	N/A				

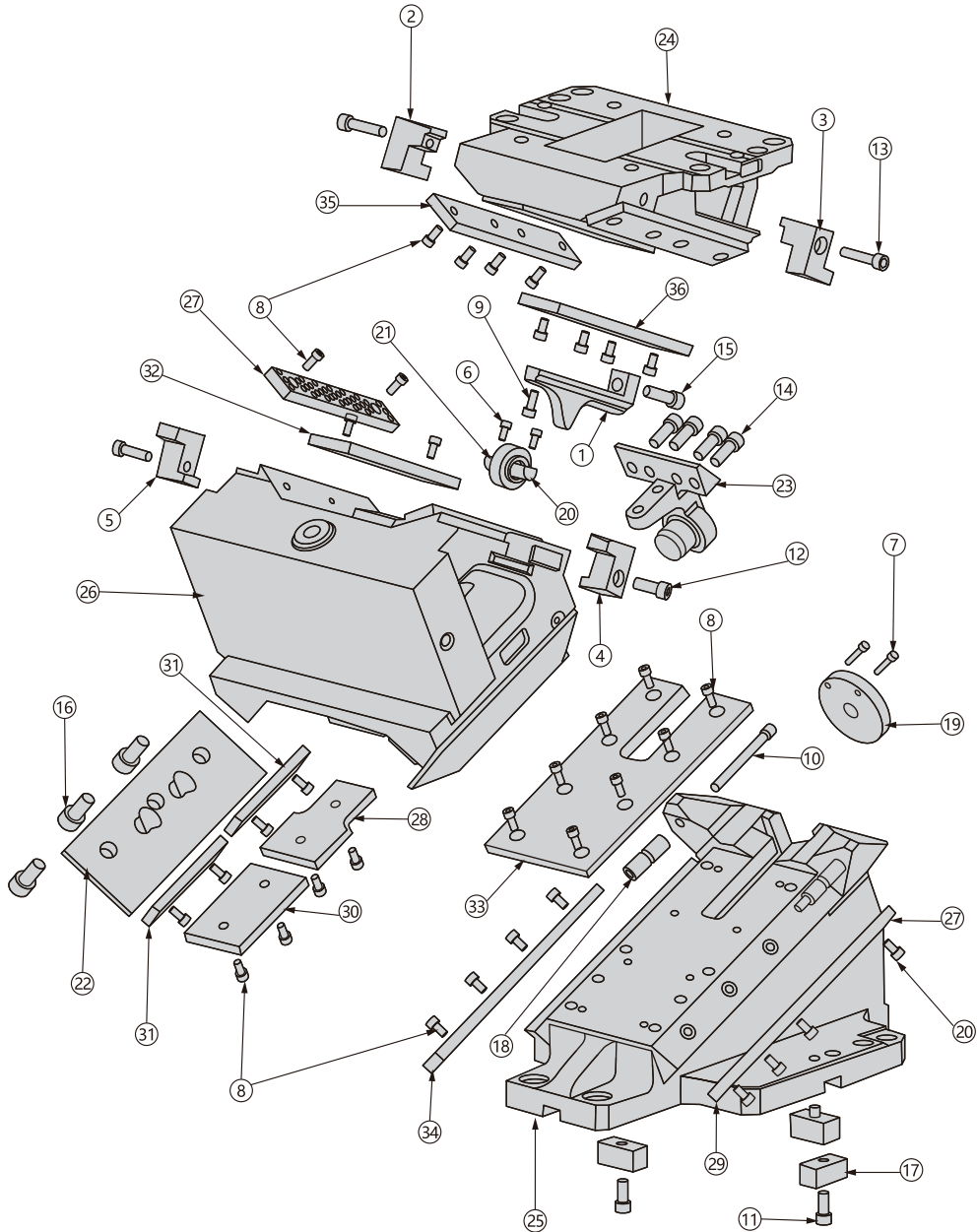
Bestellzusatz für die Feder /  
Specify spring type



Schieber-Schema /  
CAM DIAGRAM

Winkel / ANGLE	Hub / PRESS STROKE	Arbeitsweg / WORK STROKE
0	71.5	60
5	65.0	60
10	60.0	60
15	56.1	60
20	53.1	60
25	50.7	60
30	48.9	60



**NCD25**
**NCD30**
**DIEMOUNT 250-300 SERIES**
**Explosionsdarstellung / COMPONENT PARTS**

**Optional Stoßfänger  
SHOCK ABSORBERS-OPTIONAL**

Anzahl / Qty	Bestell-Nr. / Order No	Beschreibung / DESCRIPTION
2	MSC100028	Stoßfängerbauteile / Shock Absorber Assemblies



## DIEMOUNT 250-300 SERIES

Ersatzteile / REPLACEMENT PARTS			
Nummer / NUMBER	Beschreibung / DESCRIPTION	Nummer / NUMBER	Beschreibung / DESCRIPTION
1	Beschleuniger-Rampe (nur 25° & 30 °) / Accelerator Ramp 25° & 30 ° only	19	Scheibe / Disk Plate
2	Zwangsrückführung / RH Driver Return Bracket	20	Welle (nur 25° & 30°) / Roller Shaft 25° & 30°only
3	Zwangsrückführung / LH Driver Return Bracket	21	Rolle (nur 25° & 30°) / Roller 25° & 30° only
4	Zwangsrückführung / LH Positive Return Key Slide	22	Halteplatte / Keeper Plate
5	Zwangsrückführung / RH Positive Return Key Slide	23	Federstütze / Spring Return Bracket
6	M6 x 1.0 x 16 SHCS	24	Treiber / Driver
7	M6 x 1.0 x 30 SHCS	25	Aufnahme / Body
8	M8 x 1.25 x 16 SHCS	26	Schieber / Slide
9	M8 x 1.25 x 20 SHCS	27	12 x 40 x 200 mm BRZ S/L WP
10	M8 x 1.25 x 100 SHCS	28	12 x 80 x 125 mm BRZ S/L (Notch)
11	M10 x 1.5 x 25 SHCS	29	12 x 40 x 100 mm BRZ S/L WP
12	M10 x 1.5 x 35 SHCS	30	12 x 80 x 125 mm BRZ S/L WP
13	M10 x 1.5 x 50 SHCS	31	12 x 40 x 125 mm BRZ S/L WP
14	M12 x 1.75 x 30 SHCS	32	12 x 60 x 200 mm BRZ S/L WP
15	M12 x 1.75 x 45 SHCS	33	12 x 150 x 300 mm HRD Steel WP
16	M16 x 2.0 x 50 SHCS	34	12 x 38 x 300 mm HRD Steel WP
17	25 x 25 x 50 mm Passfeder / Key	35	12 x 50 x 250 mm HRD Steel WP
18	Distanzhülse / Lockout Spacer	36	12 x 58 x 250 mm HRD Steel WP

Eigenschaften / SPECIFICATIONS		
Werkzeugaufnahme / Tooling Allowance		
Größe & Gewicht / Size & Weight	Abstand / Protusion	Gewicht / Weight
		200 mm
Nennleistung in kN / Rated Capacity -kN		
Hübe / Cycles	300,000	1,000,000
Arbeitskraft / Working force	651 kN	558 kN

Federauswahl / SPRING KIT OPTIONS					
Hersteller / VENDOR	Suffix	Bestell-Nr. / Order No.	Anzahl / QTY	Anfangskraft (N) / INITIAL LOAD (N)	Endkraft (N) / FINAL LOAD (N)
Schraubendruckfeder / Coil Spring	C	SPG404621CAM	1	471	4462
Dad co	D	SKC250013	1	7400	10386
Dadco Ultra	U	CLNA0300-0017	1	9240	13526
Dadco Coil / Nitrogen	CD	SKC250012	1	1108	7139
Kaller	K	SKC250003	1	7400	10386
Kaller Powerline	P	CLNA0250-0009	1	9200	12384
Kaller Coil / Nitrogen	CK	SKC250002	1	1108	7139

