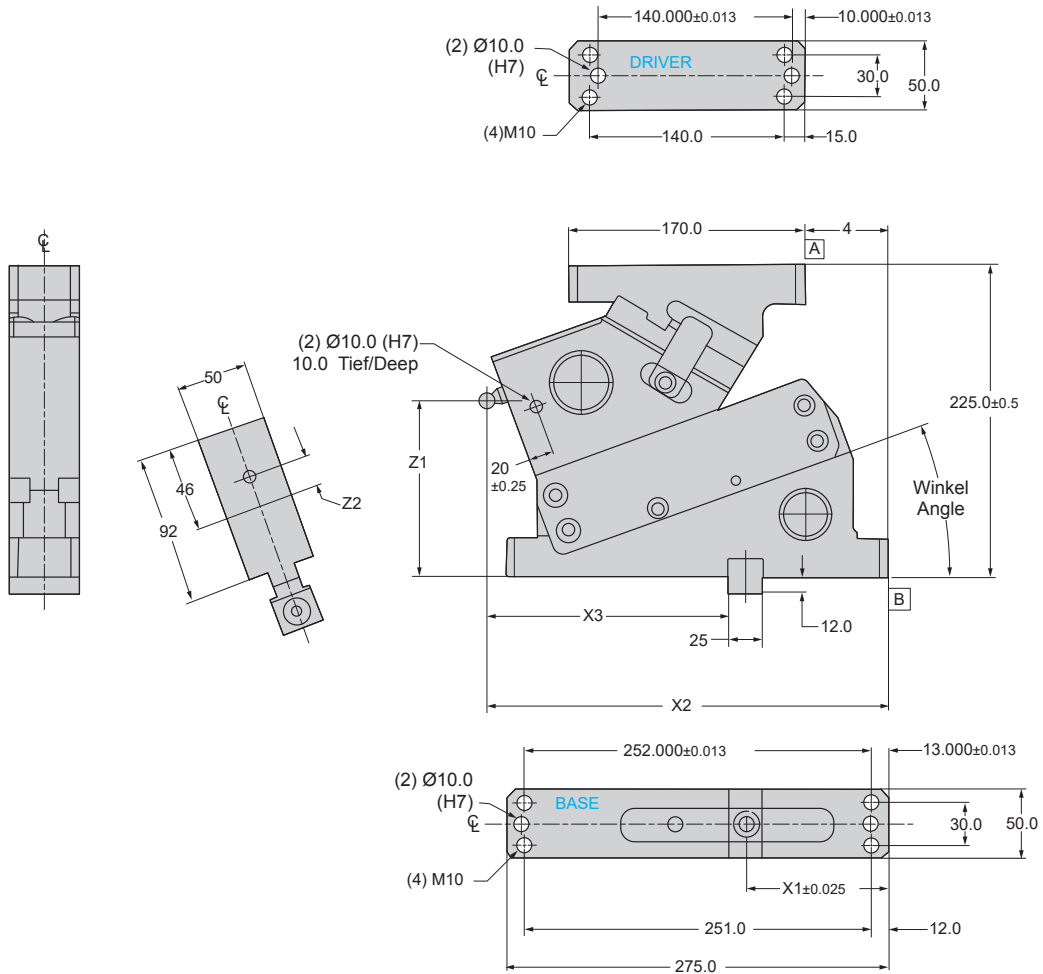


NLD05

SLIMCAM™ NLD SERIES

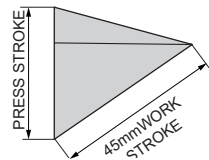


SLIMCAM™ NLD SERIES

ABMESSUNGEN & GEWICHT / DIMENSIONS AND WEIGHTS

| Bestell-Nr. / Order No. | Gewicht / WEIGHT | | Winkel / ANGLE | X1 Class of Key | X2 | X3 | X4 | Z1 | Z2 |
|----------------------------|------------------|------|-------------------|--------------------|-------|-------|------|-------|------|
| | KG | LBS. | | | | Ref. | | | Ref. |
| NLD050006_ | 20 | 44 | 0° | 93.4 | 262.0 | 156.1 | 28.0 | 160.0 | 11.0 |
| NLD050506_ | 19 | 42 | 5° | 93.7 | 275.0 | 158.9 | 35.0 | 150.0 | 9.8 |
| NLD051006_ | 20 | 43 | 10° | 92.9 | 269.2 | 163.8 | 37.0 | 140.0 | 11.0 |
| NLD051506_ | 18 | 40 | 15° | 107.6 | 284.6 | 164.5 | 53.0 | 135.0 | 12.2 |
| NLD052006_ | 18 | 40 | 20° | 102.9 | 289.1 | 173.7 | 60.0 | 130.0 | 14.3 |
| NLD052506_ | 18 | 40 | 25° | 109.4 | 289.3 | 167.4 | 75.0 | 115.0 | 6.7 |
| NLD053006_ | 18 | 40 | 30° | 107.0 | 286.1 | 166.6 | 81.0 | 105.0 | 2.7 |

Bestellzusatz für die Feder / Specify spring type



Schieber-Schema /
CAM DIAGRAM

| Winkel / ANGLE | Hub / PRESS STROKE | Arbeitsweg / WORK STROKE |
|-------------------|-----------------------|-----------------------------|
| 0 | 53.6 | 45 |
| 5 | 48.8 | 45 |
| 10 | 45.0 | 45 |
| 15 | 42.1 | 45 |
| 20 | 39.8 | 45 |
| 25 | 38.0 | 45 |
| 30 | 36.7 | 45 |

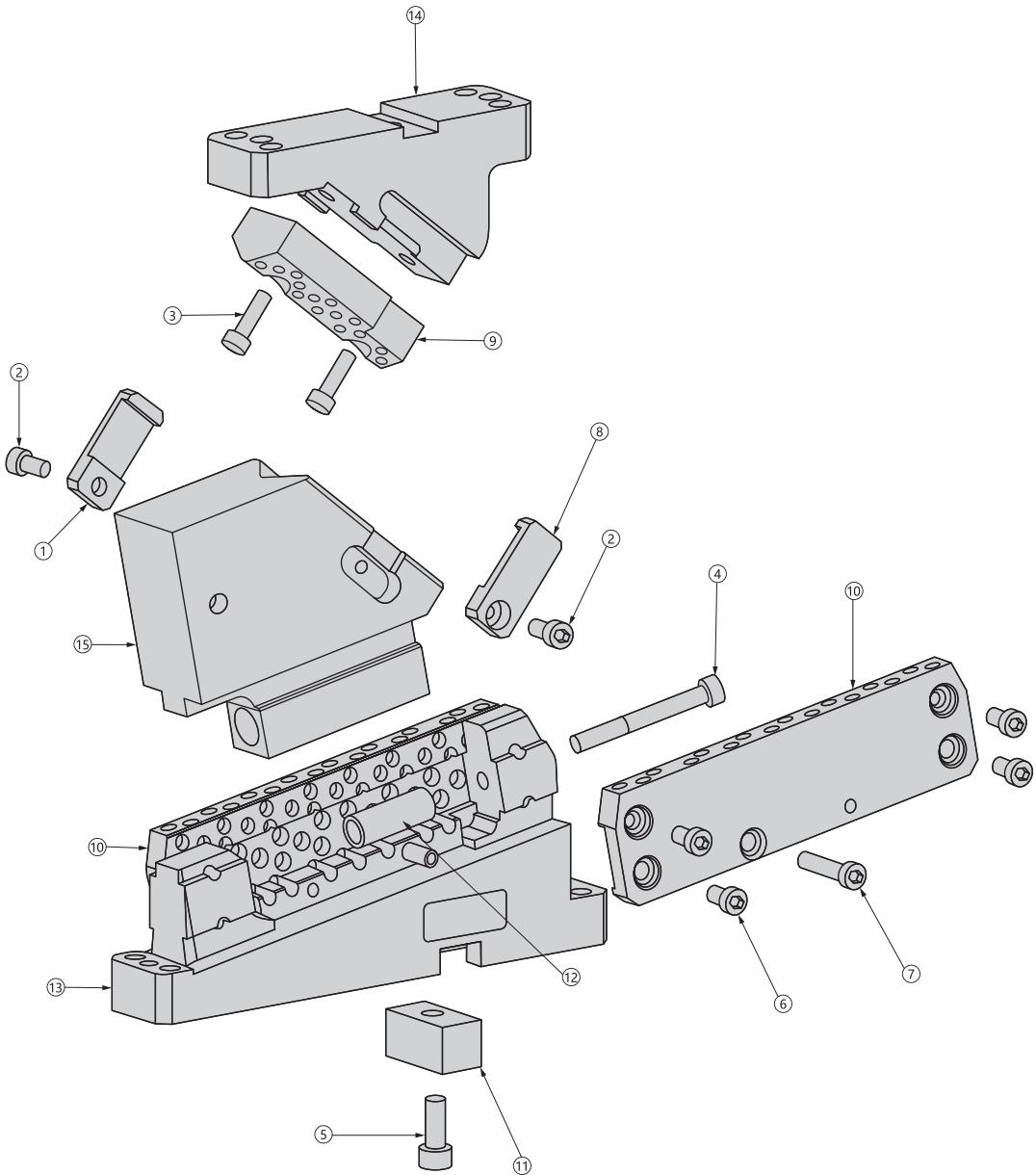




NLD05

SLIMCAM™ NLD SERIES

Explosionsdarstellung / COMPONENT PARTS



SLIMCAM™ NLD SERIES

| Ersatzteile / REPLACEMENT PARTS | | | |
|---------------------------------|--|-----------------|---|
| Nummer / NUMBER | Beschreibung / DESCRIPTION | Nummer / NUMBER | Beschreibung / DESCRIPTION |
| 1 | Zwangsrückführung / RH Positive Return | 9 | V-Block NLA/NLD 50 / V-Block NLA/NLD 50 Cam |
| 2 | M8 x 1.25 x 16 SHCS | 10 | NLA Halteplatte / NLA Keeper Plate |
| 3 | M8 x 1.25 x 25 SHCS | 11 | 25 x 25 x 50 mm Passfeder / Key |
| 4 | M8 x 1.25 x 80 SHCS | 12 | Distanzhülse / Lockout Spacer |
| 5 | M10 x 1.5 x 25 SHCS | 13 | Aufnahme / Body |
| 6 | M8 x 1.25 x 16 LHCS | 14 | Treiber / Driver |
| 7 | M8 x 1.25 x 16 LHCS | 15 | Schieber / Slide |
| 8 | Zwangsrückführung / LH Positive Return | | |

| Eigenschaften / SPECIFICATIONS | | |
|--|----------------------|------------------|
| Werkzeugaufnahme / Tooling Allowance | | |
| Größe & Gewicht / Size & Weight | Abstand / Protrusion | Gewicht / Weight |
| | 125 mm | 4 kg |
| Nennleistung in kN / Rated Capacity - kN | | |
| Hübe / Cycles | 300,000 | 1,000,000 |
| Arbeitskraft / Working force | 61 kN | 53 kN |

| Auswahl Federn (nur Gasdruckfeder) / PRING KIT OPTIONS (NITROGEN ONLY FOR SLIMCAM™) | | | | | |
|---|-----------------|-------------------------|--------------|-------------------------------------|-------------------------------|
| Hersteller / VENDOR | Suffix / SUFFIX | Bestell-Nr. / Order No. | Anzahl / QTY | Anfangskraft (N) / INITIAL LOAD (N) | Endkraft (N) / FINAL LOAD (N) |
| Dadco | D | C.090.050 | 1 | 890 | 1109 |
| Dadco Ultra | U | CLNA0050-0048 | 1 | 1700 | 2550 |
| Kaller | K | R19-050Y | 1 | 900 | 1161 |
| Kaller Powerline | P | CLNA0050-0019 | 1 | 1700 | 2550 |

