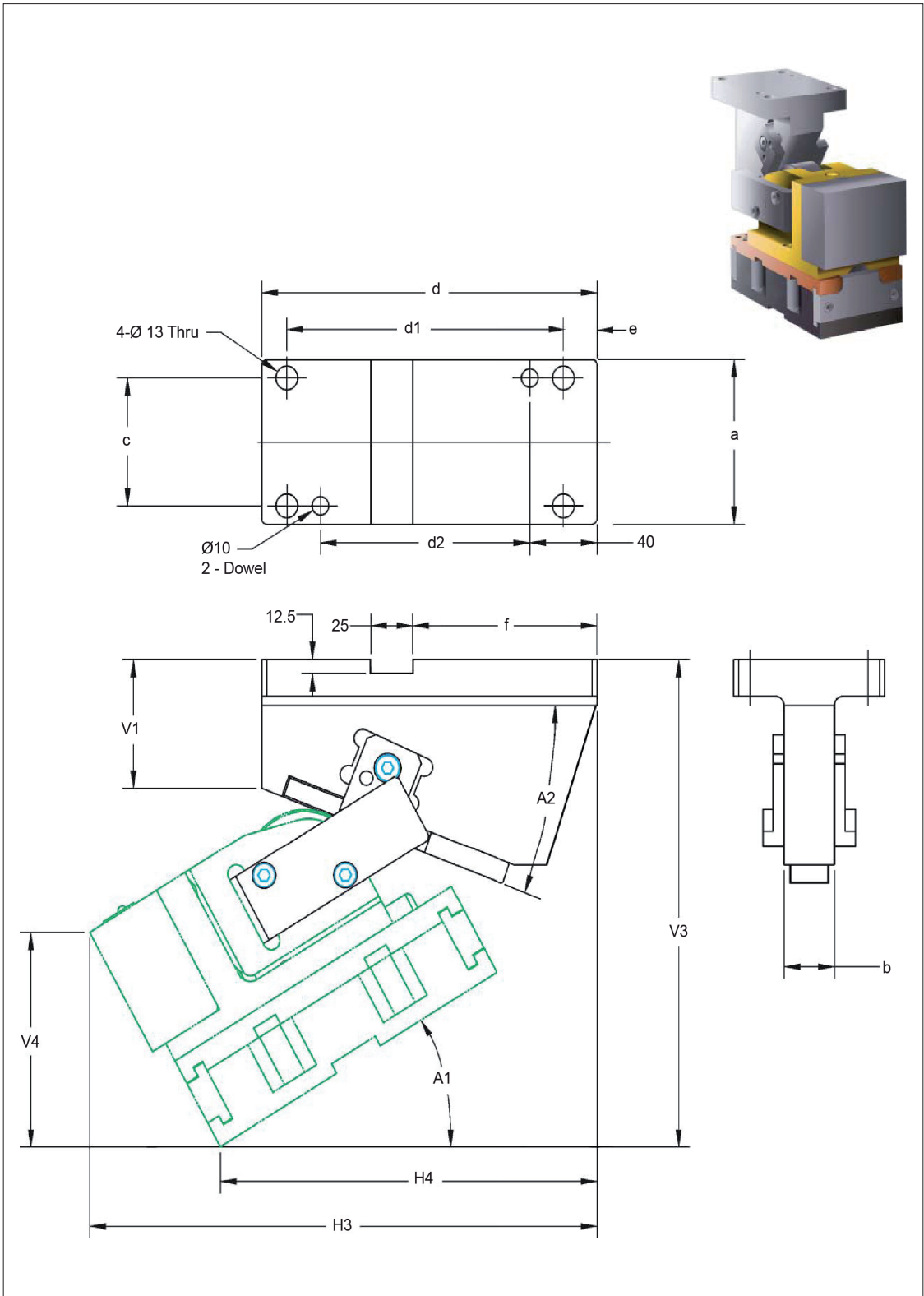
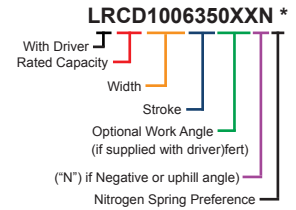
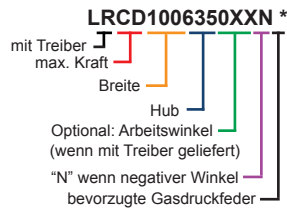




LRCO



LRCD
Bestellbeispiel /
Part No. Legend


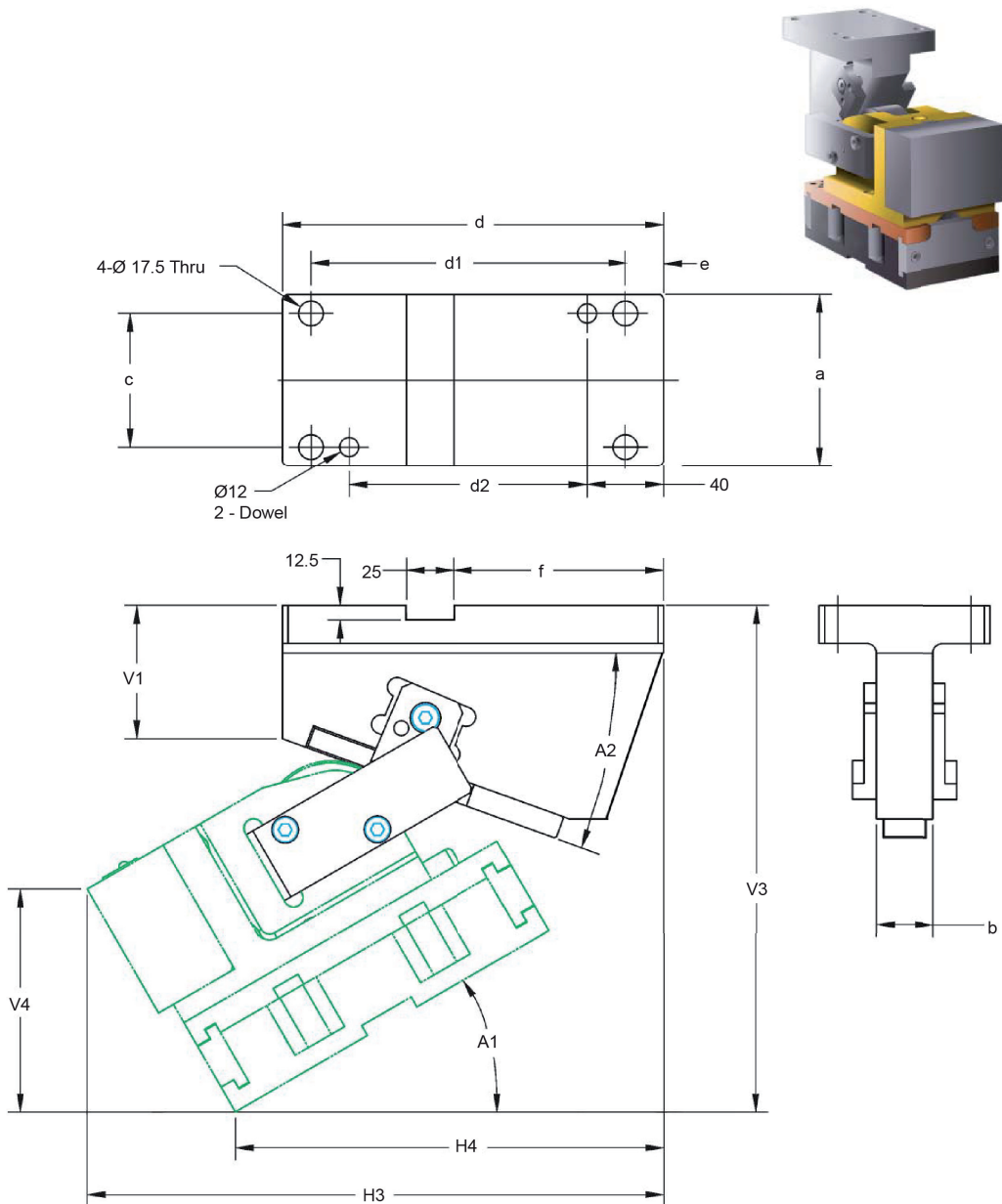
Abmessungen / Dimensions (mm)																								
	Order No / Bestellnr.	A1	A2	V3	V4	H3	H4	V1	a	b	c	d	d1	d2	e	f								
3t	LRCD030635015N*	-15°	65	132,2	114,2	284,6	310,5	42,1	90	30	70	180	145	105	20	110								
	LRCD030635010N*	-10°	60	146,3	116,0	285,2	301,1	43,1																
	LRCD030635005N*	-5°	55	160,8	117,0	283,6	289,3	44,4																
	LRCD030635000*	0°	50	170,8	117,0	274,5	270,0	40,0																
	LRCD030635010*	10°	40	203,5	114,5	271,9	247,1	60,0																
	LRCD030635020*	20°	30	214,5	108,4	262,8	218,5	60,0																
	LRCD030635030*	30°	20	237,6	99,0	256,9	194,5	80,0																
	LRCD030635040*	40°	10	248,0	86,8	244,2	165,5	90,0	90	30	70	180	150	100	15	90								
	LRCD030635050*	50°	0	268,0	71,7	214,6	122,1	115,0																
	LRCD030637500*	0°	50	177,9	117,0	277,0	284,0	50,0									90	30	70	180	145	105	20	110
	LRCD030637510*	10°	40	199,5	116,5	279,0	265,6	60,0																
	LRCD030637520*	20°	30	214,9	112,4	268,9	235,5	60,0																
	LRCD030637530*	30°	20	233,5	104,8	256,4	204,0	70,0																
	LRCD030637540*	40°	10	255,8	94,1	241,4	171,6	90,0																
LRCD030637550*	50°	0	276,9	80,6	239,1	154,0	115,0																	
LRCD051005015N*	-15°	65	147,7	137,5	319,0	346,5	42,1	90	30	70	180	145	105	20	110									
LRCD051005010N*	-10°	60	165,8	139,5	319,7	335,1	43,1																	
LRCD051005005N*	-5°	55	186,2	140,2	316,0	319,3	44,4																	
LRCD051005000*	0°	50	206,0	140,0	329,0	320,0	50,0									90	30	70	200	165	125	20	130	
LRCD051005010*	10°	40	236,2	136,3	310,3	277,1	50,0																	
LRCD051005020*	20°	30	259,7	128,5	294,9	238,5	60,0																	
LRCD051005030*	30°	20	272,9	116,7	282,3	204,5	70,0																	
LRCD051005040*	40°	10	287,7	101,4	282,4	185,5	90,0																	
LRCD051005050*	50°	0	307,2	83,1	245,2	132,1	115,0																	
LRCD051007500*	0°	50	194,1	140,0	339,0	339,0	46,1	90	30	70	200	165	125	20	130									
LRCD051007510*	10°	40	221,3	137,9	329,9	305,6	50,0																	
LRCD051007520*	20°	30	249,2	131,5	318,4	270,5	60,0																	
LRCD051007530*	30°	20	275,0	121,2	389,0	219,0	70,0																	
LRCD051007540*	40°	10	281,9	107,2	291,6	201,6	80,0																	
LRCD051007550*	50°	0	314,1	90,0	261,2	154,0	115,0																	
LRCD051009500*	0°	50	195,1	140,0	334,0	339,0	45,0									90	30	70	200	165	125	20	130	
LRCD051009510*	10°	40	231,6	138,8	324,7	305,3	55,0																	
LRCD051009520*	20°	30	248,6	133,3	322,5	279,3	60,0																	
LRCD051009530*	30°	20	270,9	123,7	307,0	241,3	70,0																	
LRCD051009540*	40°	10	294,9	110,5	293,1	206,9	90,0																	
LRCD051009550*	50°	0	317,9	93,8	270,9	166,8	115,0																	

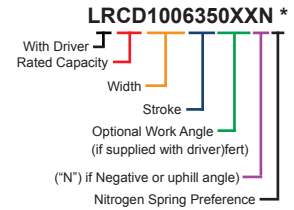
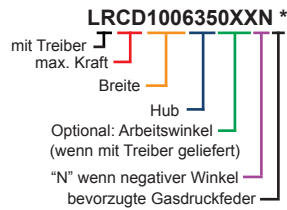
* Wählen sie ihre bevorzugte Gasdruckfeder: Dadco = D, Kaller = K
 Select preference for nitrogen gas spring: Dadco = D, Kaller = K
 (Example: LRC0306350K for Kaller preference)





LRCO



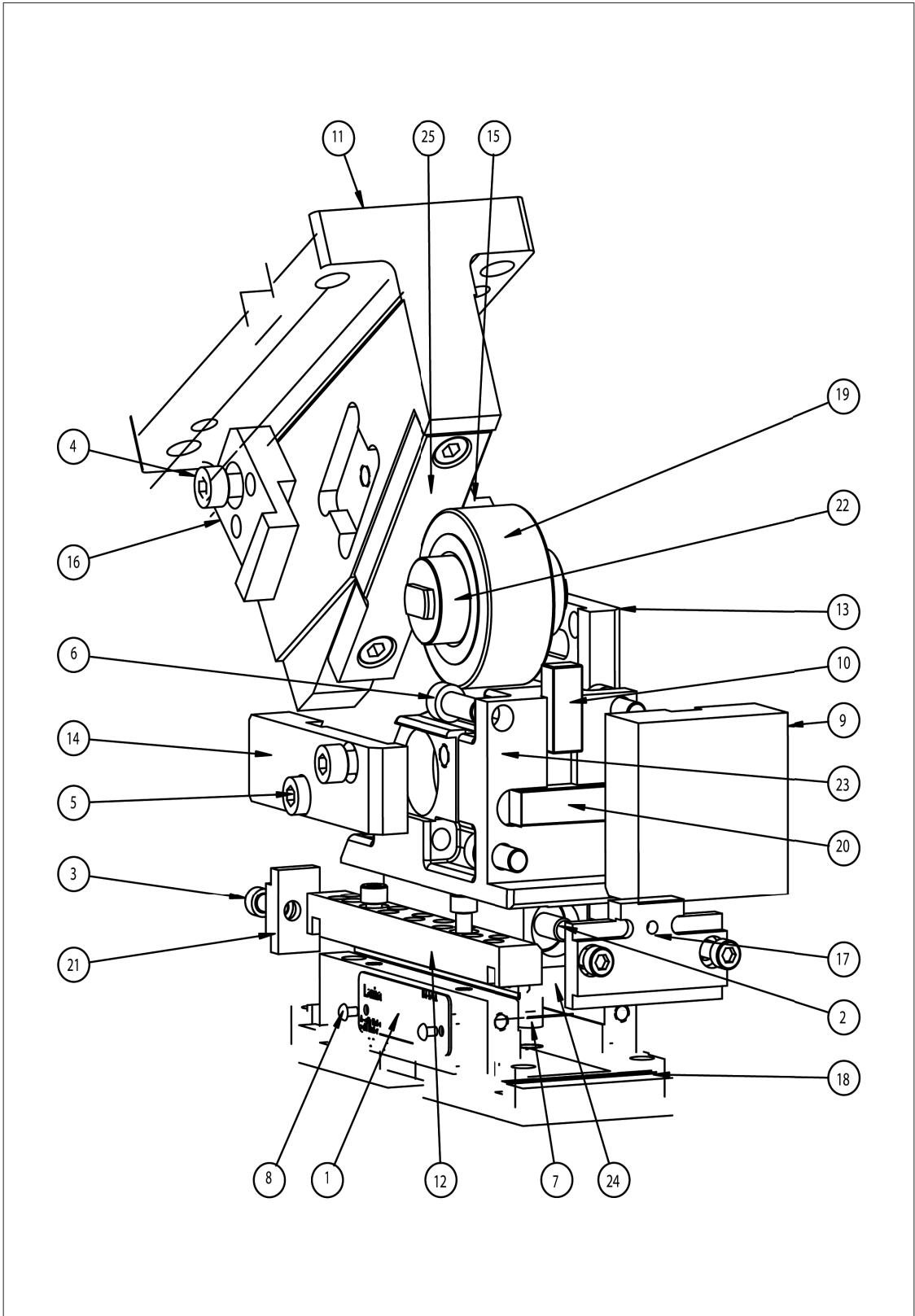
LRCO
Bestellbeispiel /
Part No. Legend


		Abmessungen / Dimensions (mm)															
	Order No / Bestellnr.	A1	A2	V3	V4	H3	H4	V1	a	b	c	d	d1	d2	e	f	
10t	LRCO101505015N*	-15°	65	158,4	158,2	357,4	396,7	25,5	140	64	110	200	165	125	20	130	
	LRCO101505010N*	-10°	60	185,1	161,0	355,4	380,8	31,5									
	LRCO101505005N*	-5°	55	207,7	162,7	352,0	363,2	44,4									
	LRCO101505000*	0°	50	217,0	163,0	347,0	344,0	40,0									
	LRCO101505010*	10°	40	249,6	160,0	342,0	310,7	50,0									
	LRCO101505020*	20°	30	277,7	152,1	329,7	271,1	60,0									
	LRCO101505030*	30°	20	305,6	139,6	319,4	235,3	80,0									
	LRCO101505040*	40°	10	318,6	122,9	301,0	193,9	90,0									
	LRCO101505050*	50°	0	339,1	102,5	274,4	147,6	115,0	140	64	110	200	170	120	15	110	
	LRCO101507500*	0°	50	221,1	163,0	352,0	350,0	50,0	140	64	110	200	165	105	20	130	
	LRCO101507510*	10°	40	245,9	160,2	346,6	316,4	50,0									
	LRCO101507520*	20°	30	276,0	152,5	333,2	275,5	60,0									
	LRCO101507530*	30°	20	305,5	140,1	321,1	237,8	80,0									
	LRCO101507540*	40°	10	329,4	123,6	300,2	193,9	100,0									
	LRCO101507550*	50°	0	339,9	103,3	290,4	164,3	115,0									140
	15t	LRCO152005015N*	-15°	65	182,6	180,0	363,7	406,7	25,5	140	64	110	200	165	105	20	130
		LRCO152005010N*	-10°	60	206,4	183,1	363,6	390,8	31,5								
		LRCO152005005N*	-5°	55	227,0	184,7	362,0	373,2	44,4								
LRCO152005000*		0°	50	235,1	185,0	359,0	354,0	40,0									
LRCO152005010*		10°	40	266,4	181,3	357,8	320,7	50,0									
LRCO152005020*		20°	30	294,2	172,1	349,1	281,1	60,0									
LRCO152005030*		30°	20	326,1	157,7	332,2	235,3	80,0									
LRCO152005040*		40°	10	338,2	138,5	316,7	193,9	90,0									
LRCO152005050*		50°	0	358,4	115,1	282,5	137,6	115,0	140	64	110	200	170	120	15	110	
LRCO152007500*		0°	50	239,2	185,0	364,0	360,0	50,0	140	64	110	200	165	125	20	130	
LRCO152007510*		10°	40	262,7	181,5	362,4	326,4	50,0									
LRCO152007520*		20°	30	298,3	172,5	342,6	275,5	60,0									
LRCO152007530*		30°	20	326,0	158,2	333,8	237,8	80,0									
LRCO152007540*		40°	10	349,0	139,2	315,8	193,9	100,0									
LRCO152007550*		50°	0	359,2	115,9	298,6	154,3	115,0									140
LRCO152009500*		0°	50	239,2	185,0	364,0	360,0	50,0	140	64	110	200	165	125	20	130	
LRCO152009510*		10°	40	271,3	183,3	352,1	316,1	50,0									
LRCO152009520*		20°	30	293,2	172,4	351,4	284,3	60,0									
LRCO152009530*		30°	20	323,4	158,2	341,1	245,2	80,0									
LRCO152009540*		40°	10	338,1	139,2	321,2	199,2	90,0									
LRCO152009550*		50°	0	359,2	115,9	311,4	167,1	115,0									140

* Wählen sie ihre bevorzugte Gasdruckfeder: Dadco = D, Kaller = K
 Select preference for nitrogen gas spring: Dadco = D, Kaller = K
 (Example: LRCO306350K for Kaller preference)



**63 mm Serie Stückliste
63 mm Series Component Parts**



**63 mm Serie Stückliste
63 mm Series Component Parts**

Pos.	Artikelnr. / Part No		Anz. / QTY.	Beschreibung / Description
1	27IDTAG50	*	1	ID TAG 50 mm
2	C-090-063		1	DADCO GAS SPRING / C.090.063
3	F10.609	*	8	M6 x 1.0 x 16 SHCS
4	F10.808	*	2	SHCS M8 x 1.25 x 12
5	F10.809	*	6	SHCS M8 x 1.25 x 16
6	F10.811	*	4	SHCS M8 x 1.25 x 25
7	F21.009	*	2	LHCS M10 x 1.5 x 16
8	F1TS187	*	2	DRIVE SCREW #4 x 3 / 16 SS
9	FACEBLOCK63		1	ROLLER CAM TOOL MOUNT FACE
10	KEY101230		1	KEY 10 x 12.7 x 30 mm
11	LRC063050D30		1	ROLLER CAM DRIVER
12	LRC06350WP		2	WEAR PLATE ROLLER CAM
13	LRC063POA		1	POS. RETURN BKT A
14	LRC063POB		1	POS. RETURN BKT B
15	LRC08100PKA		1	POS. RETURN KEY A
16	LRC08100PKB		1	POS. RETURN KEY B
17	LRCFTPL63D		1	ROLLER CAM FRONT PLATE
18	MB063050A		1	ROLLER CAM BODY
19	MCYR30SX	*	1	McGILL Metric Camrol Bearing
20	NCM050003		1	KEY 10 x 12.7 x 40 mm
21	RC063EDPL		2	END PLATE, ROLLER CAM
22	RCPIN63		1	ROLLER PIN 100 ROLLER CAM
23	SLM063050A		1	63 SERIES SLIDE, MACHINED
24	WCC1034140		1	10 mm B / L WP
25	WCS120017		1	STEEL WEAR PLATE

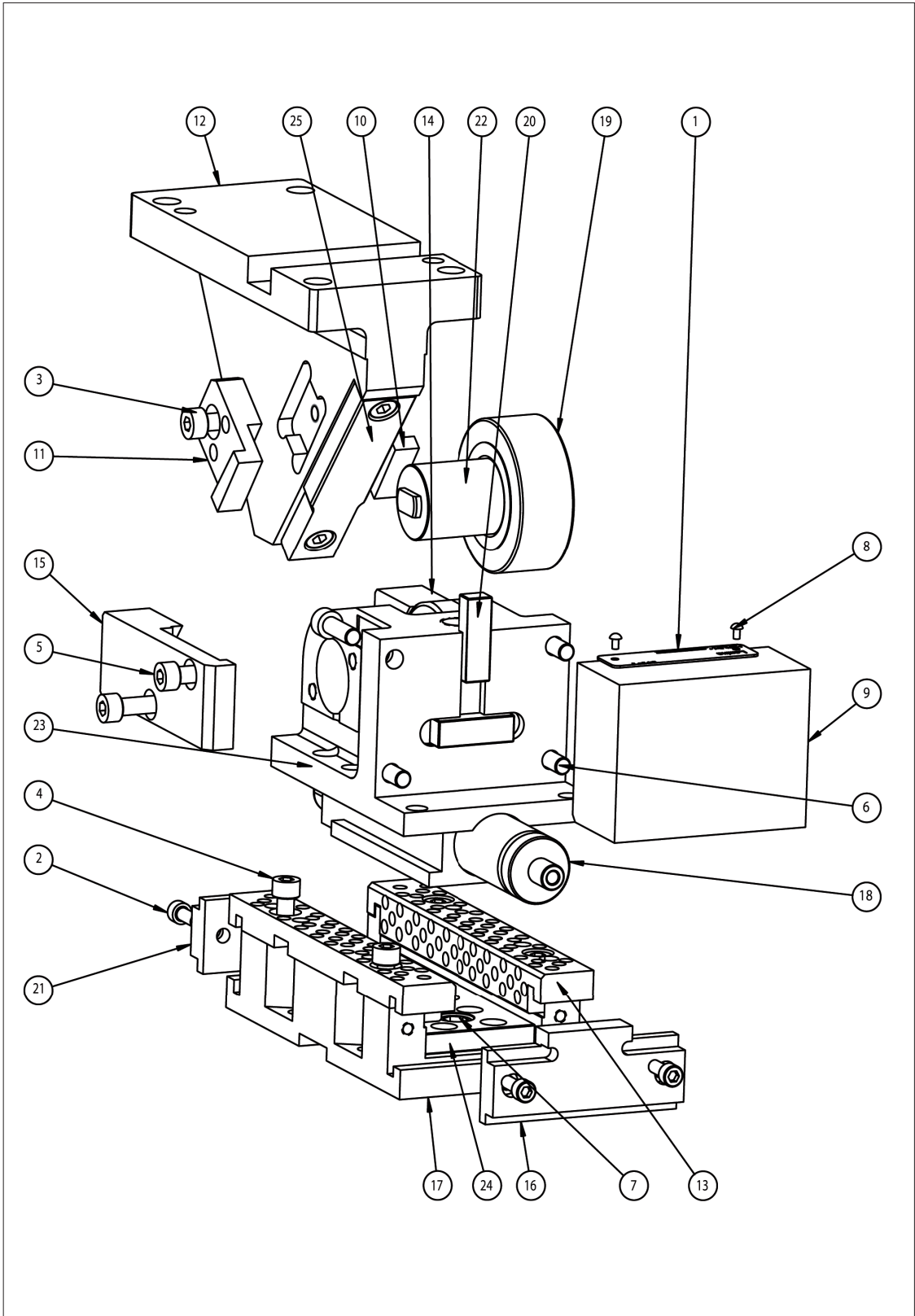
* Das ist ein Kundenspezifischer Schieber, die Komponenten sind nicht austauschbar.
This is a custom fit Cam, components are not interchangeable.

NOTE: Nutze Loctite #242 oder etwas Vergleichbares für alle Befestigungen von Wechsel-Gleitplatten /
Apply Loctite #242 or equivalent on all fasteners used to retain wear plates.





100 mm Serie Stückliste
100 mm Series Component Parts





**100 mm Serie Stückliste
100 mm Series Component Parts**

Pos.	Part No / Artikelnr.		QTY. / Anz.	Description / Beschreibung
1	27IDTAG50	*	1	ID TAG 50 mm
2	10609	*	4	M6 X 1.0 X 16 SHCS
3	F10.808	*	2	SHCS M8 x 1.25 x 12
4	F10.809	*	6	SHCS M8 x 1.25 x 16
5	F10.810	*	4	SHCS M8 x 1.25 x2 0
6	F10.811	*	4	SHCS M8 x 1.25 x 25
7	F21.009	*	2	LHCS M10 x 1.5 x 16
8	F1TS187	*	2	DRIVE SCREW #4 x 3 / 16 SS
9	FACEBLOCK100		1	ROLLER CAM TOOL MOUNT FACE
10	LRC08100PKA		1	POS. RETURN KEY A
11	LRC08100PKB		1	POS. RETURN KEY B
12	LRC100050D00		1	ROLLER CAM DRIVER
13	LRC100050WP		2	WEAR PLATE ROLLER CAM
14	LRC100POA		1	POS. RETURN BKT A
15	LRC100POB		1	POS. RETURN BKT B
16	LRCFTPL100		1	ROLLER CAM FRONT PLATE
17	MB100050A		1	ROLLER CAM BODY
18	MC3-063Y	*	1	KALLER GAS SPRING
19	MCYR35SX	*	1	McGILL Metric Camrol Bearing
20	NCM050003		2	KEY 10 X 12.7 X 40 mm
21	RC100EDPL		2	END PLATE, ROLLER CAM
22	RCPIN100		1	ROLLER PIN 100 ROLLER CAM
23	SLM100050A		1	MACHINED SLIDE
24	WCC1060150		1	10 mm B / L WP
25	WCS120017		1	STEEL WEAR PLATE

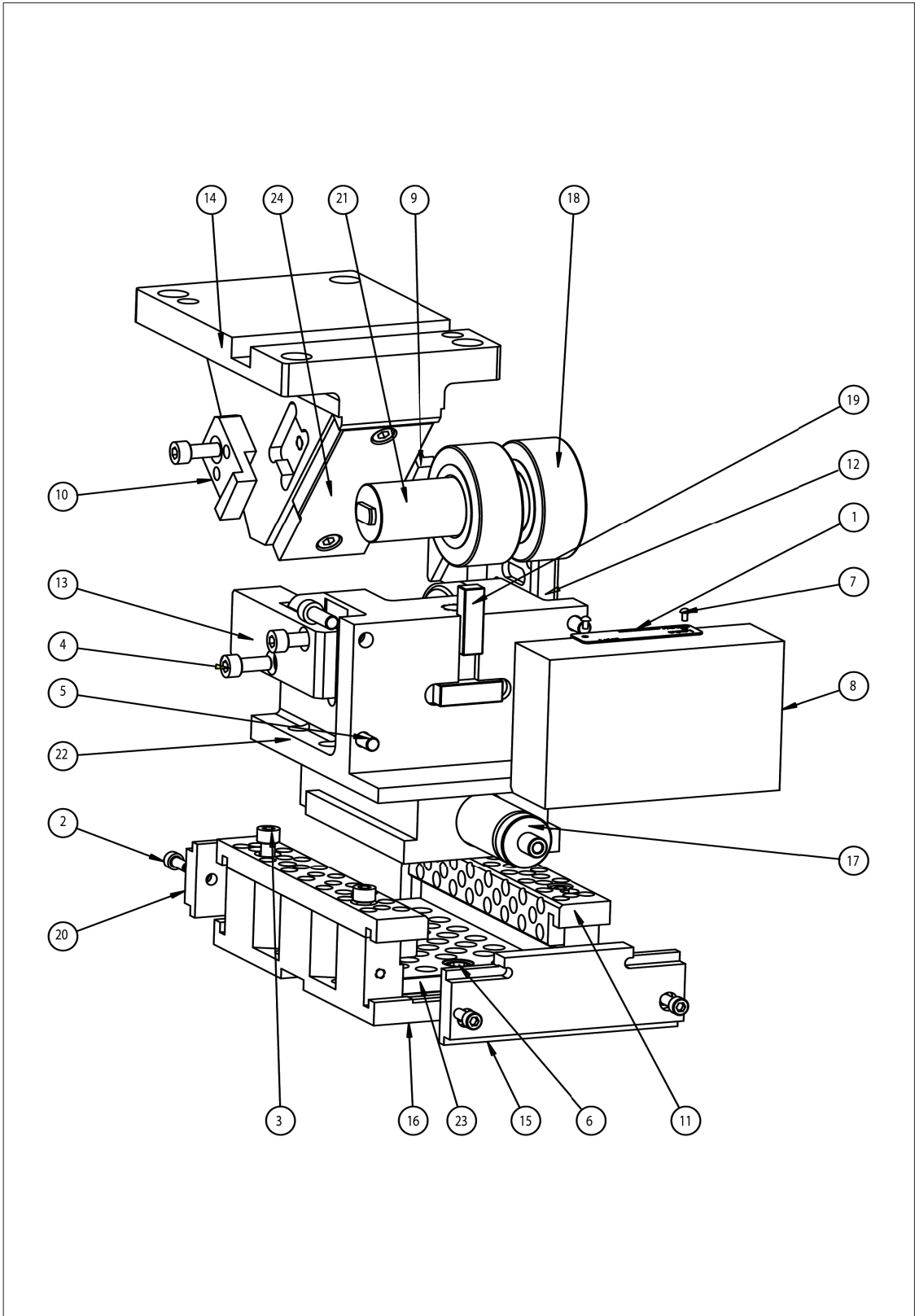
* Das ist ein Kundenspezifischer Schieber, die Komponenten sind nicht austauschbar.
This is a custom fit Cam, components are not interchangeable.

NOTE: Nutze Loctite #242 oder etwas Vergleichbares für alle Befestigungen von Wechsel-Gleitplatten
Apply Loctite #242 or equivalent on all fasteners used to retain wear plates.





150 mm Serie Stückliste
150 mm Series Component Parts



**150 mm Serie Stückliste
150 mm Series Component Parts**

Pos.	Part No / Artikelnr.		QTY. / Anz.	Description / Beschreibung
1	27IDTAG50	*	1	ID TAG 50 mm
2	10609	*	4	M6 X 1.0 X 16 SHCS
3	F10.809	*	6	SHCS M8 x 1.25 x 16
4	F10.810	*	6	SHCS M8 x 1.25 x 20
5	F10.811	*	4	SHCS M8 x 1.25 x25
6	F21.009	*	2	LHCS M10 x 1.5 x 16
7	F1TS187	*	2	DRIVE SCREW #4 x 3 / 16 SS
8	FACEBLOCK150		1	ROLLER CAM TOOL MOUNT FACE
9	LRC08100PKA		1	POS. RETURN KEY A
10	LRC08100PKB		1	POS. RETURN KEY B
11	LRC15050WP		2	WEAR PLATE ROLLER CAM
12	LRC150POA		1	POS. RETURN BKT A
13	LRC150POB		1	POS. RETURN BKT B
14	LRC200050D00		1	ROLLER CAM DRIVER
15	LRCFTPL150		1	ROLLER CAM FRONT PLATE
16	MB150050A		1	ROLLER CAM BODY
17	MC3-063Y	*	1	KALLER GAS SPRING
18	MCYR35SX	*	2	McGILL Metric Camrol Bearing
19	NCM050003		2	KEY 10 X 12.7 X 40 mm
20	RC150EDPL		2	END PLATE, ROLLER CAM
21	RCPIN150		1	ROLLER PIN 100 ROLLER CAM
22	SLM150050A		1	MACHINED SLIDE
23	WCC10100180		1	10 mm B / L WP
24	WCS120021		1	STEEL WEAR PLATE

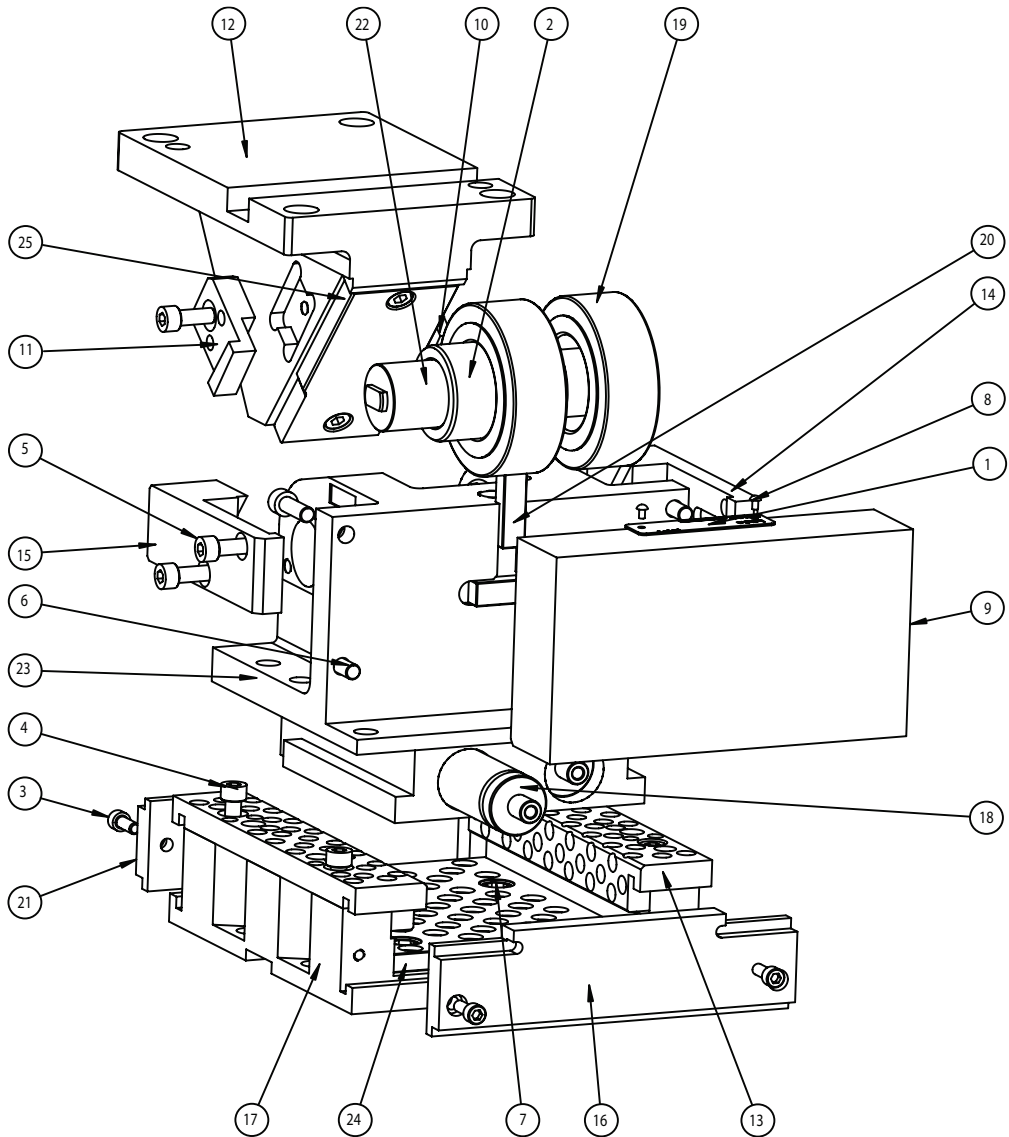
* Das ist ein Kundenspezifischer Schieber, die Komponenten sind nicht austauschbar.
This is a custom fit Cam, components are not interchangeable.

NOTE: Nutze Loctite #242 oder etwas Vergleichbares für alle Befestigungen von Wechsel-Gleitplatten
Apply Loctite #242 or equivalent on all fasteners used to retain wear plates.





200 mm Serie Stückliste
200 mm Series Component Parts





**200 mm Serie Stückliste
200 mm Series Component Parts**

Pos.	Part No / Artikelnr.		QTY. / Anz.	Description / Beschreibung
1	27IDTAG50	*	1	ID TAG 50 mm
2	BUSHING200		1	BUSHING, ROLLER CAM
3	F10.609	*	4	M6 x 1.0 x 16 SHCS
4	F10.809	*	6	SHCS M8 x 1.25 x 16
5	F10.810	*	6	SHCS M8 x 1.25 x 20
6	F10.811	*	4	SHCS M8 x 1.25 x 25
7	F21.009	*	4	LHCS M10 x 1.5 x 16
8	F1TS187	*	2	DRIVE SCREW #4 x 3 / 16 SS
9	FACEBLOCK200		1	ROLLER CAM TOOL MOUNT FACE
10	LRC08100PKA		1	POS. RETURN KEY A
11	LRC08100PKB		1	POS. RETURN KEY B
12	LRC200050D00		1	ROLLER CAM DRIVER
13	LRC20050WP		2	WEAR PLATE ROLLER CAM
14	LRC200POA		1	POS. RETURN BKT A
15	LRC200POB		1	POS. RETURN BKT B
16	LRCFTPL200		1	ROLLER CAM FRONT PLATE
17	MB200050A		1	ROLLER CAM BODY
18	MC3-063Y	*	2	KALLER GAS SPRING
19	MCYR50SX	*	2	McGILL Metric Camrol Bearing
20	NCM050003		2	KEY 10 x 12.7 x 40 mm
21	RC200EDPL		2	END PLATE, ROLLER CAM
22	RCPIN200		1	ROLLER PIN 100 ROLLER CAM
23	SLM200050A1		1	MACHINED SLIDE
24	WCC101401801		1	10 mm B/L WP
25	WCS120021		1	STEEL WEAR PLATE

* Das ist ein Kundenspezifischer Schieber, die Komponenten sind nicht austauschbar. /
This is a custom fit Cam, components are not interchangeable.

NOTE: Nutze Loctite #242 oder etwas Vergleichbares für alle Befestigungen von Wechsel-Gleitplatten /
Apply Loctite #242 or equivalent on all fasteners used to retain wear plates.

