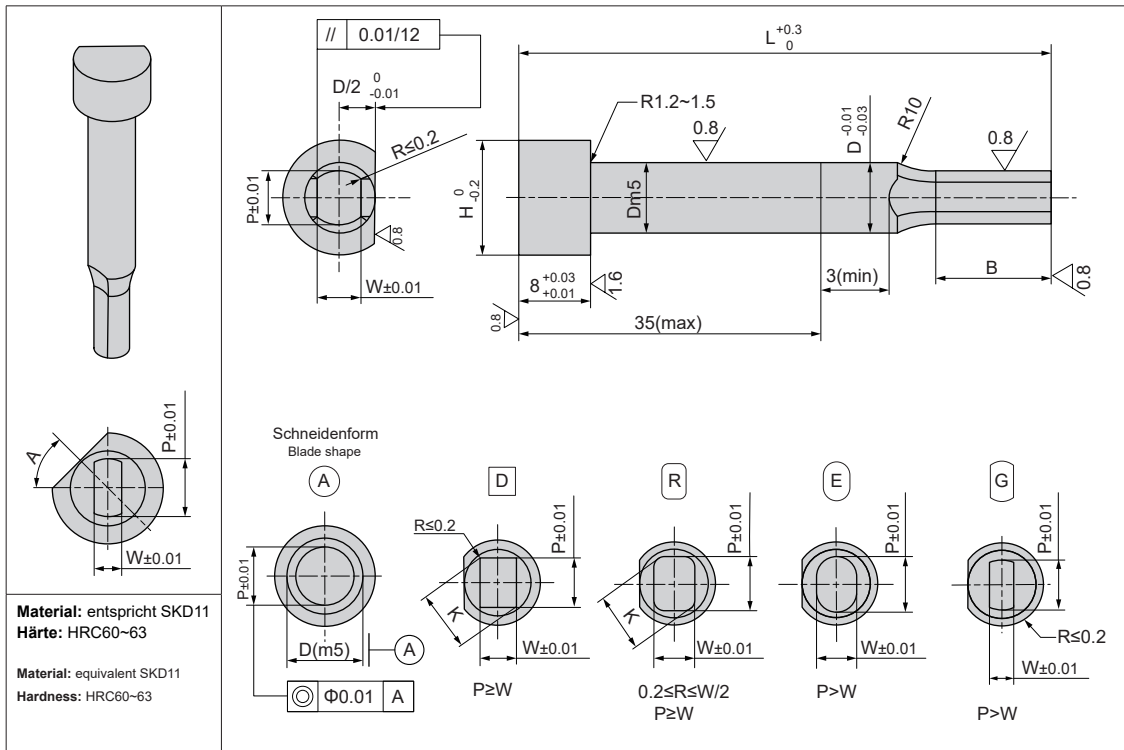



SZ-PAP(H),SZ-PAAP(H)



Bestell-Nr. Catalog No.			D	L	Abmessung in 0,01 mm Schritten Dimensions span 0.1mm A		Abmessung in 0,01 mm Schritten Dimensions span 0.1mm D R E G		H	B
Typ Type	Schneiden- form Blade shape	Schneide- nlänge Blade length			P	K max.	W min.			
D(m5) SZ-PAP SZ-PAPH	<input type="checkbox"/> (A) <input checked="" type="checkbox"/> (D) <input type="checkbox"/> (R) <input type="checkbox"/> (E) <input checked="" type="checkbox"/> (G)	S	5	50 60 70 80	2.00~4.99	4.97	1.20	10	8	
			6	50 60 70 80	2.00~5.99	5.97	1.50	11		
			8	(50) 60 70 80 90 100	3.00~7.99	7.97	2.00	13		
			10	(50) 60 70 80 90 100	3.00~9.99	9.97	(2.50)	15		
			13	(50) 60 70 80 90 100	6.00~12.99	12.97	3.00	18		
			16	(50) 60 70 80 90 100	10.00~15.99	15.97	4.00	21		
			20	(50) 60 70 80 90 100	13.00~19.99	19.97	5.00	25		
25	(50) 60 70 80 90 100	18.00~24.99	24.97	6.00	30					
D+0.005 0 SZ- PAAP SZ- PAAPH	<input type="checkbox"/> (A) <input checked="" type="checkbox"/> (D) <input type="checkbox"/> (R) <input type="checkbox"/> (E) <input checked="" type="checkbox"/> (G)	L	5	60 70 80	2.00~4.99	4.97	1.20	10	13	
			6	60 70 80	2.00~5.99	5.97	1.50	11		
			8	60 70 80 90 100	3.00~7.99	7.97	2.00	13		
			10	60 70 80 90 100	3.00~9.99	9.97	(2.50)	15		
			13	60 70 80 90 100	6.00~12.99	12.97	3.00	18		
			16	70 80 90 100	10.00~15.99	15.97	4.00	21		
			20	70 80 90 100	13.00~19.99	19.97	5.00	25		
25	70 80 90 100	18.00~24.99	24.97	6.00	30					

Type	Material
SZ-PAP SZ-PAPH	SKH51 TiCN beschichtet SKH51 TiCN coated
SZ-PAAP SZ-PAAPH	Pulver-Schnellarbeitsstahl TiCN beschichtet Powder high speed steel TiCN coated

Bestellnummer / Order Number

	Bestellnr. / Catalog No.	-	L	-	P	-	W	-	R
	SZ-PAPAS13	-	80	-	10.5	-	7.34	-	0.1
KC A=45	SZ-PAPAS13	-	80	-	10.5	-	7.34	-	0.1 - KC45

