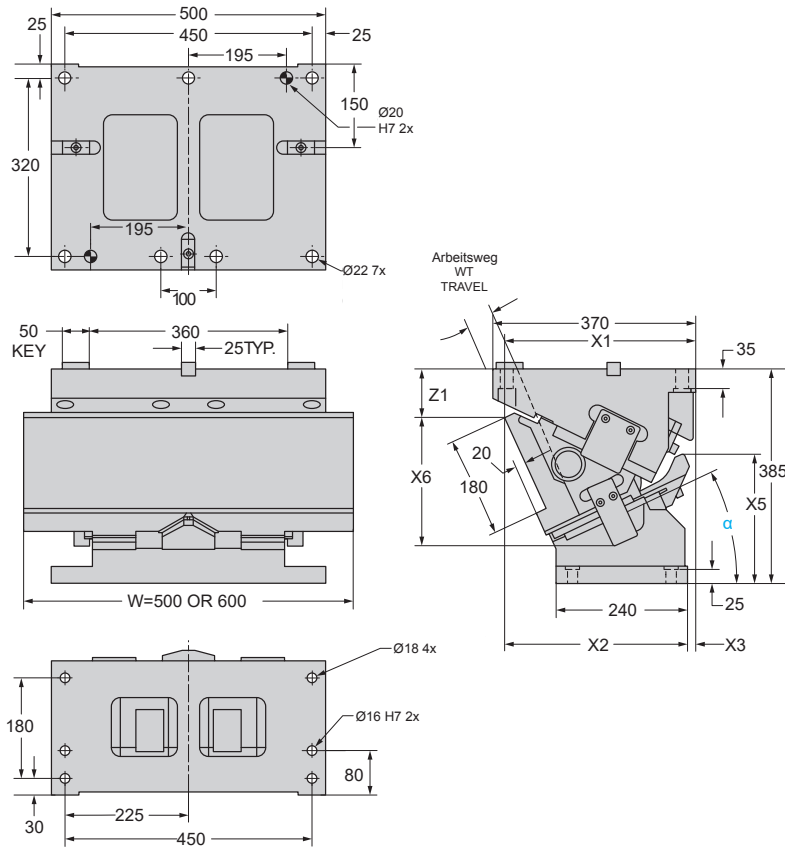


WAC500 / 600


Alle Maße ohne Toleranzangabe
 No tolerance is stated or implied.

Arbeitsflächenbreite /
 MOUNTING FACE WIDTH
 Arbeitsflächenhöhe /
 MOUNTING FACE HEIGHT

500 oder / OR 600

180

Gleitweg /
 SLIDE STROKE

60.0

Befestigungsmöglichkeiten /
 FASTENER SCHEDULE
 Treiber / DRIVER
 Aufnahme / BODY

Stifte / DOWELS

2-Ø16
 2-Ø20

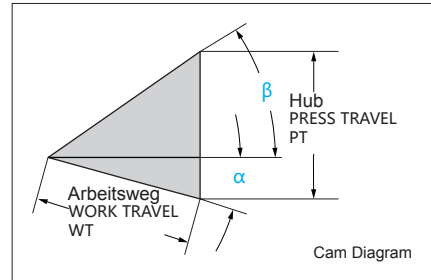
Schrauben / SCREWS

4-M16
 7-M20



**Breite oben hängende Schieber
Heavy Duty Wide Aerial Cam -500 / 600**
Breite / Width 500

Bestellnr. / Order No.		kg	WT	PT	NOTE: Übrige Abmessungen wie WAC600 Rest dimensions like WAC600
WAC0500-00	0	299.6	38.6	46.0	
WAC0500-05	5	290.6	42.6	46.1	
WAC0500-10	10	281.9	46.7	46.7	
WAC0500-15	15	275.6	50.9	47.6	
WAC0500-20	20	272.4	55.3	48.9	
WAC0500-25	25	271.5	60.0	50.7	
WAC0500-30	30	277.4	65.1	53.1	
WAC0500-35	35	279.2	70.8	56.1	
WAC0500-40	40	280.6	77.1	60.0	
WAC0500-45	45	280.6	84.5	65.0	
WAC0500-50	50	286.0	93.3	71.0	
WAC0500-55	55	300.1	101.1	98.4	
WAC0500-60	60	291.9	118.2	112.8	




Endkraft der Rückholfedern (N) / SPRING RETURN FORCE FINAL LOAD (Kg / lbs)		Anzahl der Federn / SPRINGS Qty.	Zusätzliche Federkammern / OPTIONAL SPRING POCKETS	Endkraft pro Feder / FORCE PER SPRING
Typ / TYPE	Endkraft / RNAL LOAD			Endkraft (kg / lbs) / FINAL (Kg / lbs)
Schraubendruckfeder / COIL	662 kg / 1460 lb	2	keine / NONE	331 kg / 730 lb
Gasdruckfeder / NITROGEN	2212 kg / 4878 lb	2	keine / NONE	1106 kg / 2439 lb

Breite / Width 600

Bestellnr. / Order No.		kg	WT	PT	α	β	X1	X2	X3	X5	X6	Z1	Z1+X6
WAC0600-00	0	306.0	38.6	46.0	0°	50°	323.1	219.1	104	128.5	295.0	57.0	352.0
WAC0600-05	5	297.0	42.6	46.1	5°	45°	329.7	249.7	80	151.0	286.5	59.0	345.5
WAC0600-10	10	288.3	46.7	46.7	10°	40°	336.1	271.1	65	171.7	275.8	62.2	338.0
WAC0600-15	15	282.0	50.9	47.6	15°	35°	342.7	292.7	50	192.6	262.9	67.1	330.0
WAC0600-20	20	278.8	55.3	48.9	20°	30°	347.4	312.4	35	213.9	248.1	74.7	322.8
WAC0600-25	25	277.9	60.0	50.7	25°	25°	349.2	334.2	15	231.7	231.4	87.2	318.6
WAC0600-30	30	283.8	65.1	53.1	30°	20°	351.0	351.0	0	238.1	213.0	104.3	317.3
WAC0600-35	35	285.6	70.8	56.1	35°	15°	353.7	368.7	-15	255.3	192.9	117.7	310.6
WAC0600-40	40	287.0	77.1	60.0	40°	10°	355.6	385.6	-30	269.7	171.3	130.2	301.5
WAC0600-45	45	287.0	84.5	65.0	45°	5°	355.4	393.4	-38	278.4	148.5	144.8	293.3
WAC0600-50	50	292.4	93.3	71.0	50°	0°	355.2	415.2	-60	220.7	124.5	161.8	286.3
WAC0600-55	55	306.9	101.1	98.4	55°	-5°	372.6	432.6	-60	223.4	107.8	188.2	296.0
WAC0600-60	60	298.7	118.2	112.8	60°	-10°	368.3	428.3	-60	202.7	82.5	202.1	284.6

Alle Maße ohne Toleranzangaben.
No tolerance is stated or implied.

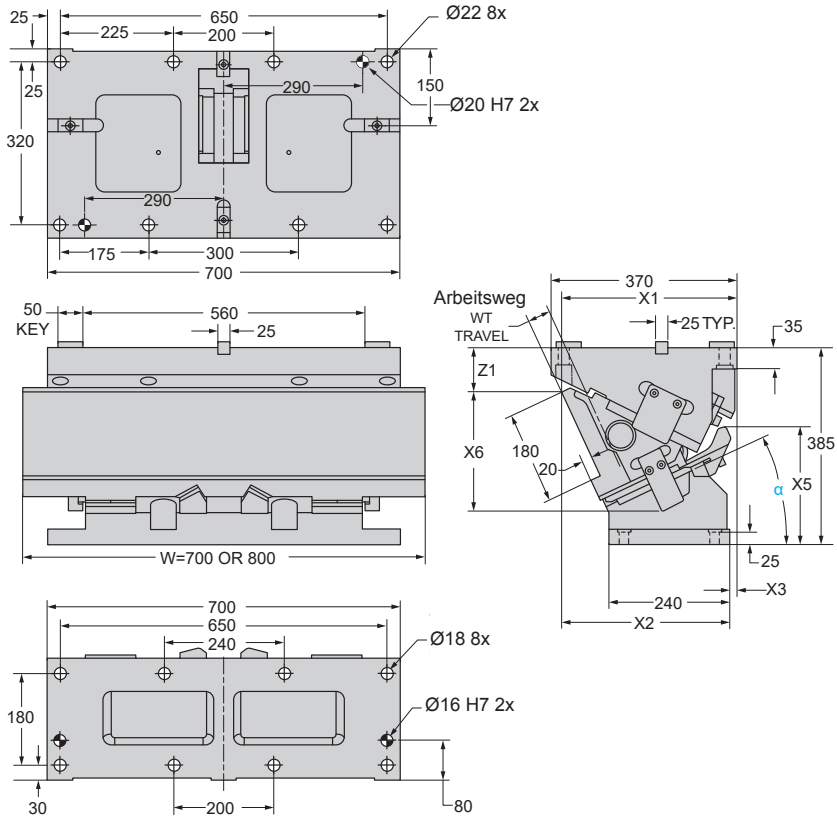
Bestellnummer / Order Number


 Bestellnr. / Catalog No. - **XX**
WAC0500-10 - **XX**
 Schraubendruckfeder / COIL SPRING
 Gasdruckfeder / NITROGEN SPRING





WAC700 / 800



Alle Maße ohne Toleranzangabe
No tolerance is stated or implied.

Arbeitsflächenbreite /
MOUNTING FACE WIDTH
Arbeitsflächenhöhe /
MOUNTING FACE HEIGHT

700 OR 800
180

Gleitweg /
SLIDE STROKE

60.0

Befestigungsmöglichkeiten /
FASTENER SCHEDULE
Treiber / DRIVER
Aufnahme / BODY

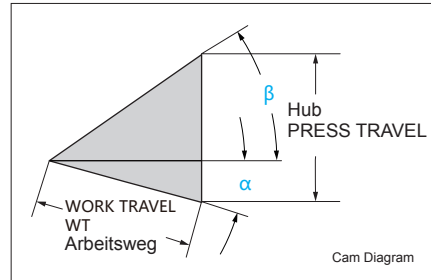
Stifte / DOWELS
2-Ø16
2-Ø20

Schrauben / SCREWS
8-M16
8-M20



**Breite oben hängende Schieber
Wide Aerial Cam -700 / 800**
Breite / WIDTH 700

Bestellnr. / Order No.		kg	WT	PT	NOTE: Übrige Abmessungen wie WAC 800 / NOTE: FOR REST OF DIMENSIONS SEE CHART BELOW
WAC0700-00	0	405.7	38.6	46.0	
WAC0700-05	5	394.4	42.6	46.1	
WAC0700-10	10	385.8	46.7	46.7	
WAC0700-15	15	421.6	50.9	47.6	
WAC0700-20	20	371.1	55.3	48.9	
WAC0700-25	25	372.3	60.0	50.7	
WAC0700-30	30	379.7	65.1	53.1	
WAC0700-35	35	382.3	70.8	56.1	
WAC0700-40	40	384.1	77.1	60.0	
WAC0700-45	45	383.6	84.5	65.0	
WAC0700-50	50	394.9	93.3	71.0	
WAC0700-55	55	415.1	101.1	98.4	
WAC0700-60	60	407.6	118.2	112.8	




Endkraft der Rückholfedern (N) / SPRING RETURN FORCE FINAL LOAD (Kg / lbs)		Anzahl der Federn / SPRINGS Qty.	Zusätzliche Federkammern / OPTIONAL SPRING POCKETS	Endkraft pro Feder / FORCE PER SPRING
Typ / TYPE	Endkraft / FINAL LOAD			Endkraft (kg / lbs) / FINAL (Kg / lbs)
Schraubendruckfeder / COIL	1324 kg / 2920 lb	4	keine / NONE	331 kg / 730 lb
Gasdruckfeder / NITROGEN	2212 kg / 4878 lb	2	2	1106 kg / 2439 lb

Breite / WIDTH 80

Bestellnr. / Order No.		kg	WT	PT	α	β	X1	X2	X3	X5	X6	Z1	Z1+X6
WAC0800-00	0	412.2	38.6	46.0	0°	50°	323.1	219.1	104	128.5	295.0	57.0	352.0
WAC0800-05	5	400.9	42.6	46.1	5°	45°	329.7	249.7	80	151.0	286.5	59.0	345.5
WAC0800-10	10	392.3	46.7	46.7	10°	40°	336.1	271.1	65	171.7	275.8	62.2	338.0
WAC0800-15	15	428.1	50.9	47.6	15°	35°	342.7	292.7	50	192.6	262.9	67.1	330.0
WAC0800-20	20	377.6	55.3	48.9	20°	30°	347.4	312.4	35	213.9	248.1	74.7	322.8
WAC0800-25	25	378.8	60.0	50.7	25°	25°	349.2	334.2	15	231.7	231.4	87.2	318.6
WAC0800-30	30	386.2	65.1	53.1	30°	20°	351.0	351.0	0	238.1	213.0	104.3	317.3
WAC0800-35	35	388.8	70.8	56.1	35°	15°	353.7	368.7	-15	255.3	192.9	117.7	310.6
WAC0800-40	40	390.6	77.1	60.0	40°	10°	355.6	385.6	-30	269.7	171.3	130.2	301.5
WAC0800-45	45	390.1	84.5	65.0	45°	5°	355.4	393.4	-38	278.4	148.5	144.8	293.3
WAC0800-50	50	401.4	93.3	71.0	50°	0°	355.2	415.2	-60	220.7	124.5	161.8	286.3
WAC0800-55	55	421.8	101.1	98.4	55°	-5°	372.6	432.6	-60	223.4	107.8	188.2	296.0
WAC0800-60	60	414.3	118.2	112.8	60°	-10°	368.3	428.3	-60	202.7	82.5	202.1	284.6

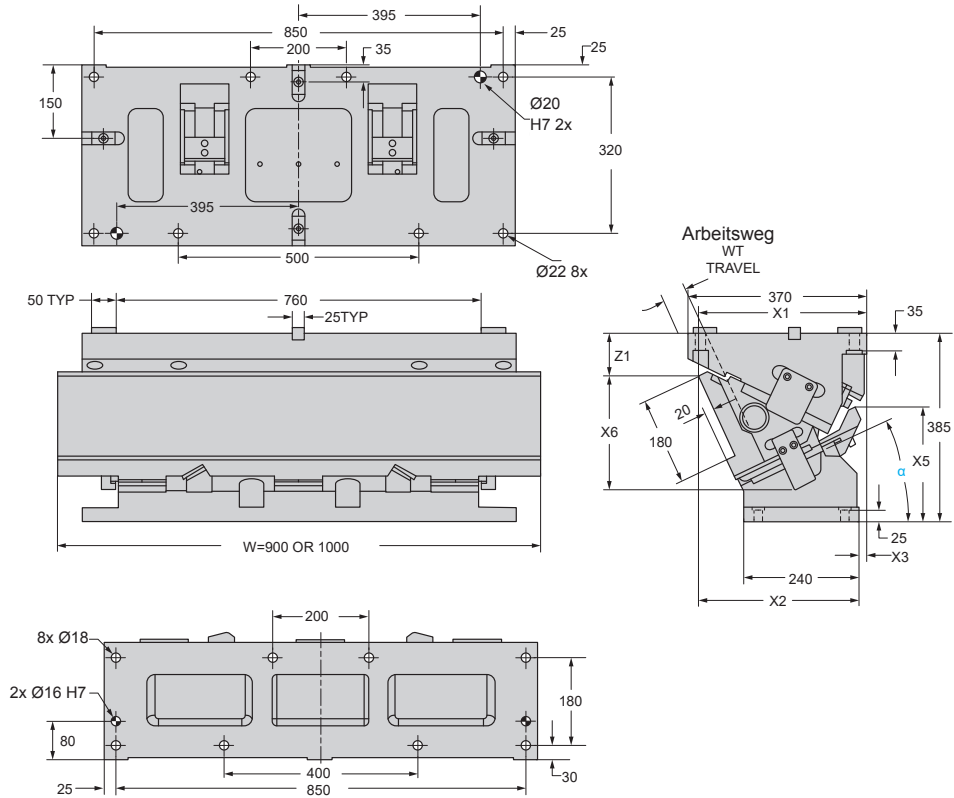
Alle Maße ohne Toleranzangabe
No tolerance is stated or implied

Bestellnummer / Order Number

	Bestellnr. / Catalog No.	-	XX
	WAC0700-10	-	XX

Schraubendruckfeder / COIL SPRING
 Gasdruckfeder / NITROGEN SPRING



WAC900 / 1000


Alle Maße ohne Toleranzangabe
 No tolerance is stated or implied.

Arbeitsflächenbreite /
 MOUNTING FACE WIDTH
 Arbeitsflächenhöhe /
 MOUNTING FACE HEIGHT

900 OR / OR 1000
 180

Gleitweg /
 SLIDE STROKE

60.0

Befestigungsmöglichkeiten /
 FASTENER SCHEDULE
 Treiber / DRIVER
 Aufnahme / BODY

Stifte / DOWELS
 2-Ø16
 2-Ø20

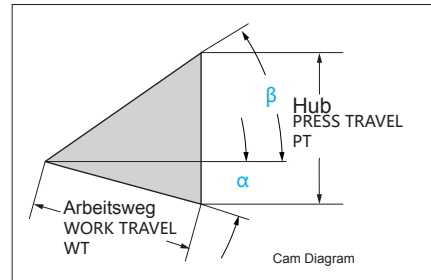
Schrauben / SCREWS
 8-M16
 8-M20



**Breite oben hängende Schieber
Wide Aerial Cam** -900 / 1000

Breite / WIDTH 900

Bestellnr. Order No.		kg	WT	PT	NOTE: Übrige Abmessungen wie WAC 1000 / NOTE: FOR REST OF DIMENSIONS SEE CHART BELOW
WAC0900-00	0	518.5	38.6	46.0	
WAC0900-05	5	504.7	42.6	46.1	
WAC0900-10	10	491.8	46.7	46.7	
WAC0900-15	15	483.2	50.9	47.6	
WAC0900-20	20	478.6	55.3	48.9	
WAC0900-25	25	480.0	60.0	50.7	
WAC0900-30	30	489.3	65.1	53.1	
WAC0900-35	35	493.7	70.8	56.1	
WAC0900-40	40	495.1	77.1	60.0	
WAC0900-45	45	496.2	84.5	65.0	
WAC0900-50	50	510.2	93.3	71.0	
WAC0900-55	55	536.1	101.1	98.4	
WAC0900-60	60	523.0	118.2	112.8	



Endkraft der Rückholfedern (N) / SPRING RETURN FORCE FINAL LOAD (Kg / lbs)		Anzahl der Federn / SPRINGS Qty.	Zusätzliche Federkammern / OPTIONAL SPRING POCKETS	Endkraft pro Feder / FORCE PER SPRING
Typ / TYPE	Endkraft / FINAL LOAD			Endkraft (kg / lbs) / FINAL (Kg / lbs)
Schraubendruckfeder / COIL	1655 kg / 3650 lb	5	keine / NONE	331 kg / 730 lb
Gasdruckfeder / NITROGEN	3318 kg / 7317 lb	3	2	1106 kg / 2439 lb

Breite / WIDTH 1000

Bestellnr. Order No.		kg	WT	PT	α	β	X1	X2	X3	X5	X6	Z1	Z1+X6
WAC1000-00	0	525.3	38.6	46.0	0°	50°	323.1	219.1	104	128.5	295.0	57.0	352.0
WAC1000-05	5	511.5	42.6	46.1	5°	45°	329.7	249.7	80	151.0	286.5	59.0	345.5
WAC1000-10	10	498.6	46.7	46.7	10°	40°	336.1	271.1	65	171.7	275.8	62.2	338.0
WAC1000-15	15	490.0	50.9	47.6	15°	35°	342.7	292.7	50	192.6	262.9	67.1	330.0
WAC1000-20	20	485.4	55.3	48.9	20°	30°	347.4	312.4	35	213.9	248.1	74.7	322.8
WAC1000-25	25	486.8	60.0	50.7	25°	25°	349.2	334.2	15	231.7	231.4	87.2	318.6
WAC1000-30	30	496.1	65.1	53.1	30°	20°	351.0	351.0	0	238.1	213.0	104.3	317.3
WAC1000-35	35	500.5	70.8	56.1	35°	15°	353.7	368.7	-15	255.3	192.9	117.7	310.6
WAC1000-40	40	501.9	77.1	60.0	40°	10°	355.6	385.6	-30	269.7	171.3	130.2	301.5
WAC10 00-45	45	503.0	84.5	65.0	45°	5°	355.4	393.4	-38	278.4	148.5	144.8	293.3
WAC1000-50	50	517.0	93.3	71.0	50°	0°	355.2	415.2	-60	220.7	124.5	161.8	286.3
WAC1000-55	55	542.8	101.1	98.4	55°	-5°	372.6	432.6	-60	223.4	107.8	188.2	296.0
WAC1000-60	60	529.7	118.2	112.8	60°	-10°	368.3	428.3	-60	202.7	82.5	202.1	284.6

 Alle Maße ohne Toleranzangabe
 No tolerance is stated or implied.

Bestellnummer / Order Number


Bestellnr. / Catalog No.

- XX

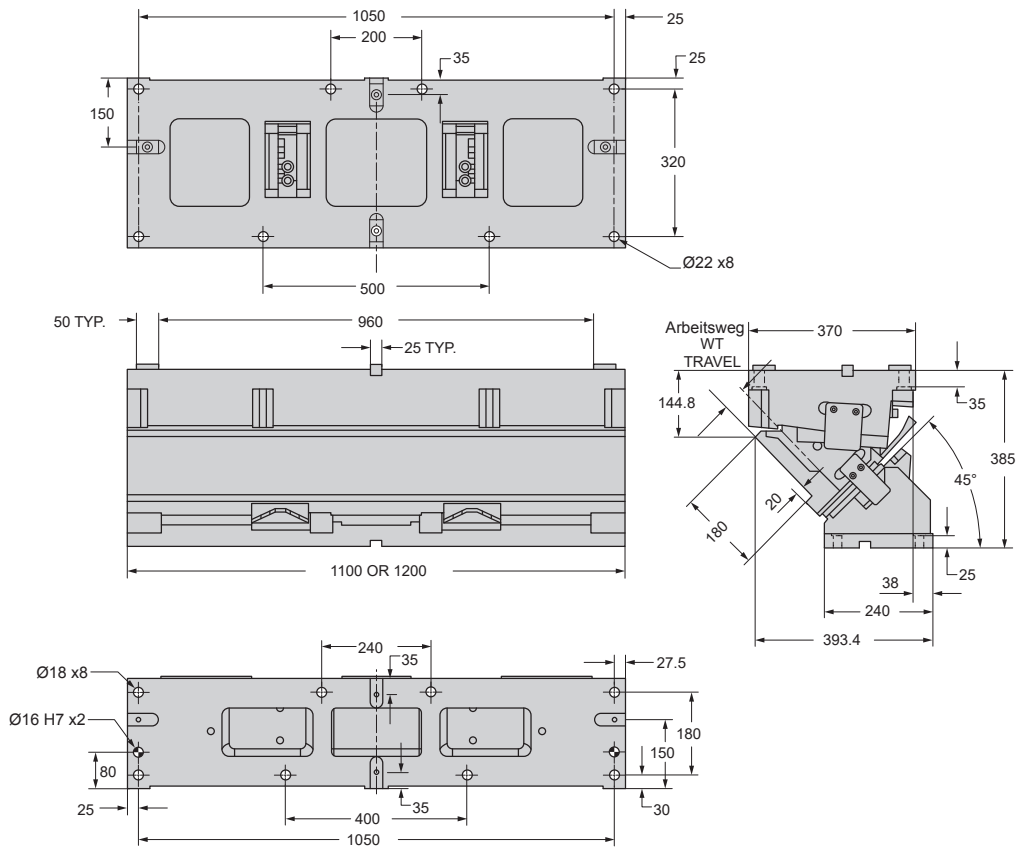
WAC0900-10

- XX

Schraubendruckfeder / COIL SPRING

Gasdruckfeder / NITROGEN SPRING



WAC1100 / 1200


Alle Maße ohne Toleranzangabe
 No tolerance is stated or implied.

Arbeitsflächenbreite /
 MOUNTING FACE WIDTH
 Arbeitsflächenhöhe /
 MOUNTING FACE HEIGHT

1100 oder / OR 1200
 180

Gleitweg /
 SLIDE STROKE

60.0

Befestigungsmöglichkeiten /
 FASTENER SCHEDULE
 Treiber / DRIVER
 Aufnahme / BODY

Stifte / DOWELS
 2-Ø16
 2-Ø20

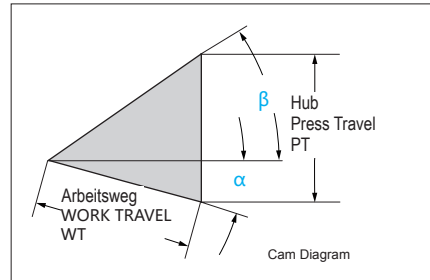
Schrauben / SCREWS
 8-M16
 8-M20



**Breite oben hängende Schieber
Wide Aerial Cam** -1100 / 1200

Breite / WIDTH 1100

Bestellnr. / Order No.		kg	WT	PT	NOTE: Übrige Abmessungen wie WAC 1200 / NOTE: FOR REST OF DIMENSIONS SEE CHART BELOW
WAC1100-00	0	685.3	38.6	46.0	
WAC1100-05	5	669.8	42.6	46.1	
WAC1100-10	10	656.1	46.7	46.7	
WAC1100-15	15	644.8	50.9	47.6	
WAC1100-20	20	641.5	55.3	48.9	
WAC1100-25	25	644.9	60.0	50.7	
WAC1100-30	30	663.2	65.1	53.1	
WAC1100-35	35	662.0	70.8	56.1	
WAC1100-40	40	666.3	77.1	60.0	
WAC1100-45	45	666.7	84.5	65.0	
WAC1100-50	50	685.3	93.3	71.0	
WAC1100-55	55	718.7	101.1	98.4	
WAC1100-60	60	697.7	118.2	112.8	
WAC1100-65	65	727.0	141.4	133.4	



Endkraft der Rückholfedern (N) / SPRING RETURN FORCE FINAL LOAD (Kg / lbs)		Anzahl der Federn / SPRINGS Qty.	Zusätzliche Federkammern / OPTIONAL SPRING POCKETS	Endkraft pro Feder / FORCE PER SPRING
Typ / TYPE	Endkraft / FINAL LOAD			Endkraft (kg / lbs) / FINAL (Kg / lbs)
Schraubendruckfeder / COIL	1655 kg / 3650 lb	5	keine / NONE	331 kg / 730 lb
Gasdruckfeder / NITROGEN	3318 kg / 7317 lb	3	2	1106 kg / 2439 lb

Breite / WIDTH 1200

Bestellnr. / Order No.		kg	WT	PT	α	β	X1	X2	X3	X5	X6	Z1	Z1+X6
WAC1200-00	0	691.5	38.6	46.0	0°	50°	323.1	219.1	104	133.2	295.0	57.0	352.0
WAC1200-05	5	676.0	42.6	46.1	5°	45°	329.7	249.7	80	154.1	286.5	59.0	345.5
WAC1200-10	10	662.3	46.7	46.7	10°	40°	336.1	271.1	65	169.3	275.8	62.2	338.0
WAC1200-15	15	651.0	50.9	47.6	15°	35°	342.7	292.7	50	190.4	260.0	67.1	327.1
WAC1200-20	20	647.7	55.3	48.9	20°	30°	347.4	312.4	35	208.7	245.3	74.7	320.0
WAC1200-25	25	651.1	60.0	50.7	25°	25°	349.2	334.2	15	222.1	228.7	87.2	315.9
WAC1200-30	30	669.4	65.1	53.1	30°	20°	351.0	351.0	0	236.7	210.4	104.3	314.7
WAC1200-35	35	668.2	70.8	56.1	35°	15°	353.7	368.7	-15	251.9	190.4	117.7	308.1
WAC1200-40	40	672.5	77.1	60.0	40°	10°	355.6	385.6	-30	270.1	169.0	130.2	299.2
WAC1200-45	45	672.9	84.5	65.0	45°	5°	355.4	393.4	-38	284.9	146.4	144.8	291.2
WAC1200-50	50	691.5	93.3	71.0	50°	0°	355.2	415.2	-60	198.6	122.6	161.8	284.4
WAC1200-55	55	725.0	101.1	98.4	55°	15°	372.6	432.6	-60	203.6	106.0	188.2	294.2
WAC1200-60	60	704.0	118.2	112.8	60°	10°	368.3	428.3	-60	185.4	81.0	202.1	283.1
WAC1200-65	65	733.3	141.4	133.4	65°	5°	361.8	451.8	-90	217.7	55.4	217.5	272.9

Alle Maße ohne Toleranzangabe
No tolerance is stated or implied.

Bestellnummer / Order Number

Bestellnr. / Catalog No.
XX
WAC1100-10
XX

Schraubendruckfeder / COIL SPRING

Gasdruckfeder / NITROGEN SPRING

